



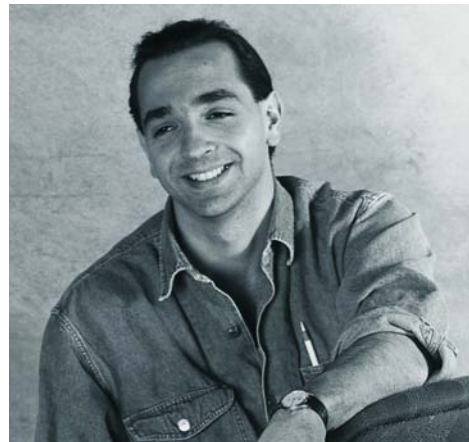
42 Saint Albans Place
 Chatfield, MN 55923
 Tel. 800 533 1696
 mail@etuohy.com
 www.tuohyfurniture.com

BENNEY
 DESIGN BY DAVID ALLAN PESSO

BENNEY
 CASEGOODS COLLECTION



Not all Benney products are depicted in this brochure. Complete lines of armchair seating, lounge seating, occasional tables and conference tables are presented in separate brochures.



The Benney Collection



Tuohy presents the Benney Collection as a fully-coordinated family of armchairs, lounge seating, occasional tables and casegoods, each offering a deftly balanced fusion of romanticism and contemporary design.

The inspiration for the Benney Collection was derived from the 1940's in America, and the concurrent enthusiasm for Raymond Lowey's "new aesthetic" known as streamlining. A whimsical appreciation for these romantic notions, coupled with a respect and understanding of contemporary architectural forms, has resulted in a timely, transitional statement. With today's office landscape still drawing inspiration from classic design elements, Benney will endure.





Benney casegoods have been carefully designed to retain the beauty of fine furniture amidst the rigorous demands of modular flexibility. This superbly engineered system includes desk and table components, work surfaces, overhead units and modular towers.

Power and communications modules, grommets and pathways may be applied as required by project requirements. Surface grommets are available in finishes compatible with the pull hardware finish selection. Dome grommets and Hinged P/C Docks are black and may be outfitted with power and communication modules.



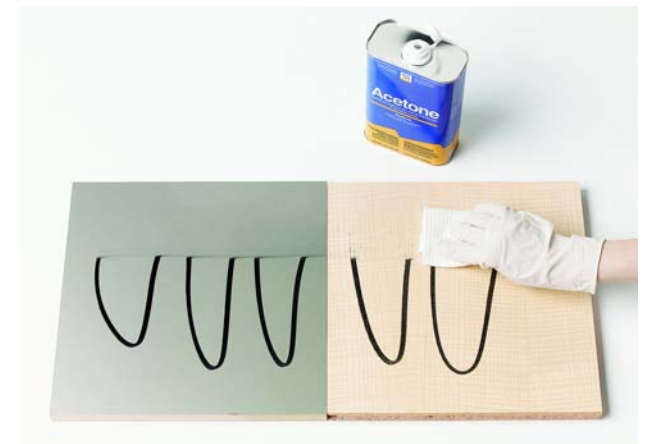
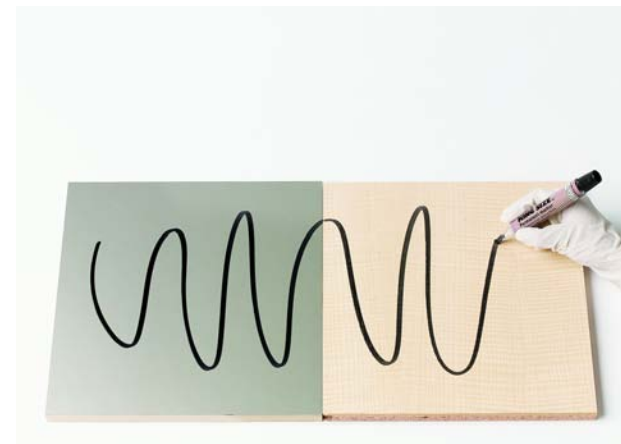
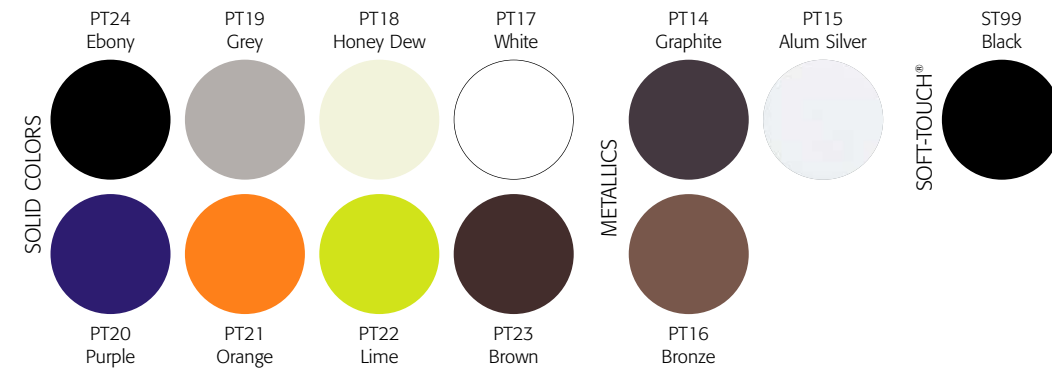


HARDWOODS

Numbers shown below identify Open-Pore Satin finishes. Filled and Gloss finishes are also available for most colors; see the price schedule for details. Refer also to the Tuohy Wood Finishes brochure for larger color swatches. Actual samples should be used to make final selections.



SOLID COLORS



All Tuohy wood finishes and solid color finishes have unsurpassed properties for performance and beauty. Permanent magic marker, for example, can be removed using acetone, without damage to the finish surface!

Normal maintenance involves only wiping surfaces clean with a soft cloth. A light amount of ammonia or vinegar-based cleaners, such as glass cleaner, may be used to remove grease or similar grime. Furniture polishes are not recommended.