

INSTALLATION GUIDE
Geneva Conference

April 1, 2017

TUOHY



GENEVA STANDARD CONNECTIONS

TABLE DESK ASSEMBLY (PANEL BASE)

1. Attach (3) 10" angle irons to support keel using $\frac{5}{8}$ " PH screws provided in hardware pack. (Evenly space the irons across support keel leaving 6" of clear space on each end.)
2. Place cams in cam holes of support keels. (Arrows pointing outward.)
3. Insert cam bolts into threaded holes in panel bases, then align cam bolts with cams installed in the support keels. (Cams and cam bolts are located in the hardware pack.)
4. Tighten cams by turning them clockwise until they are completely secure.

5. After the bases are assembled center the table top over the bases. Secure table top to the bases using screws provided in the hardware pack. (Outside end of each base should be 11" from end of table.)

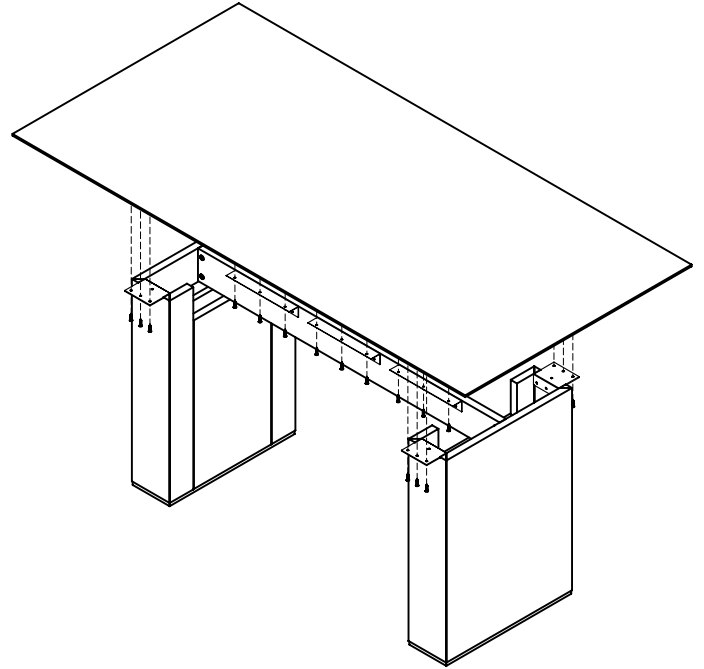
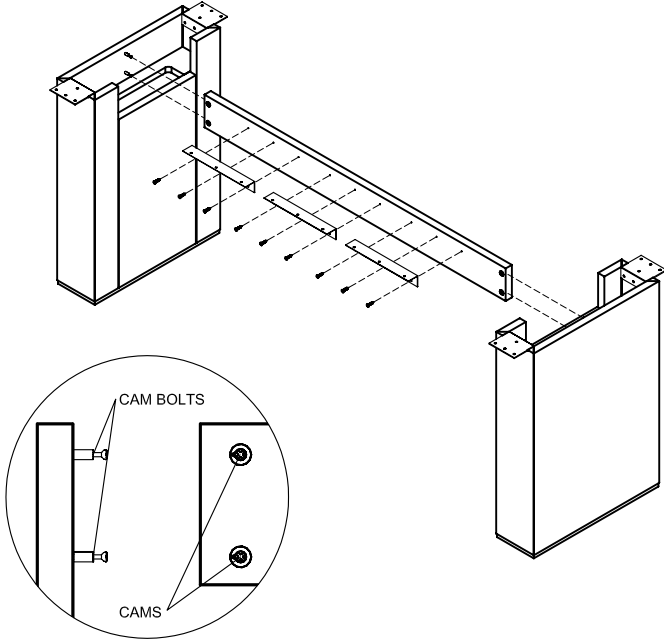
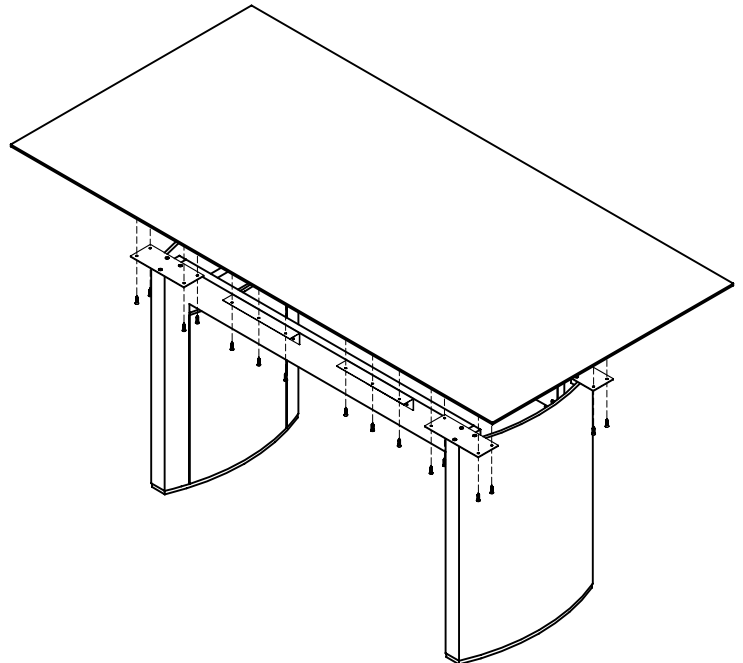
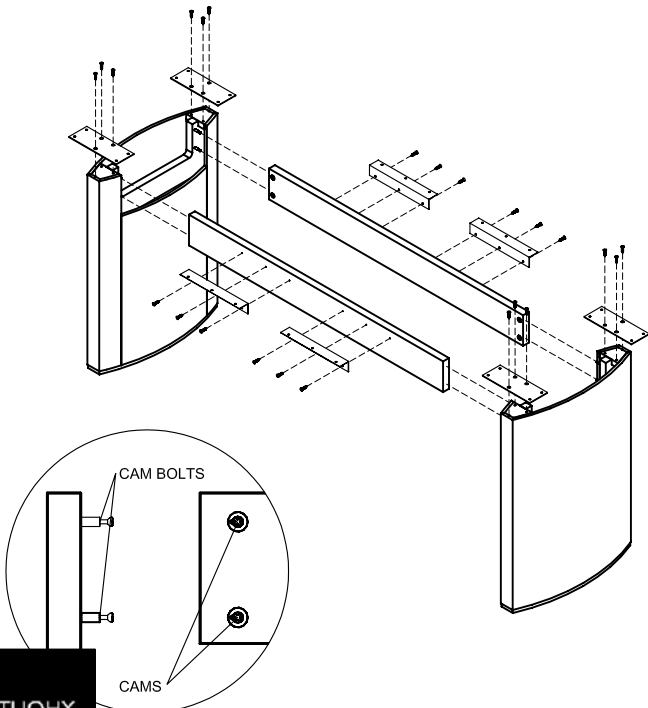


TABLE DESK ASSEMBLY (BOWED BASE)

1. Attach (2) 10" angle irons to each support keel using $\frac{5}{8}$ " PH screws provided in hardware pack. (Evenly space the irons across the support keel.)
2. Place cams in cam holes of support keels. (Arrows pointing outward.)
3. Insert cam bolts into threaded holes in panel bases, then align cam bolts with cams installed in the support keels. (Cams and cam bolts are located in the hardware pack.)
4. Tighten cams by turning them clockwise until they are completely secure.

5. After the bases are assembled, center the table top over the bases. Secure table top to the bases using screws provided in the hardware pack. (Outside end of each base should be 11" from end of table.)

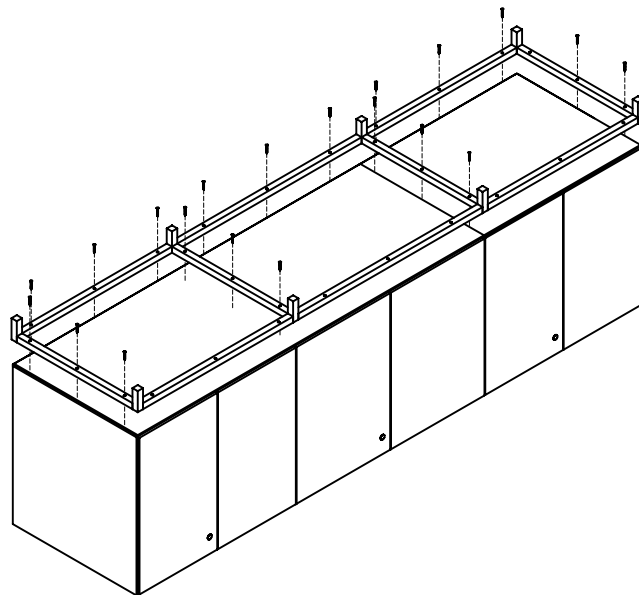
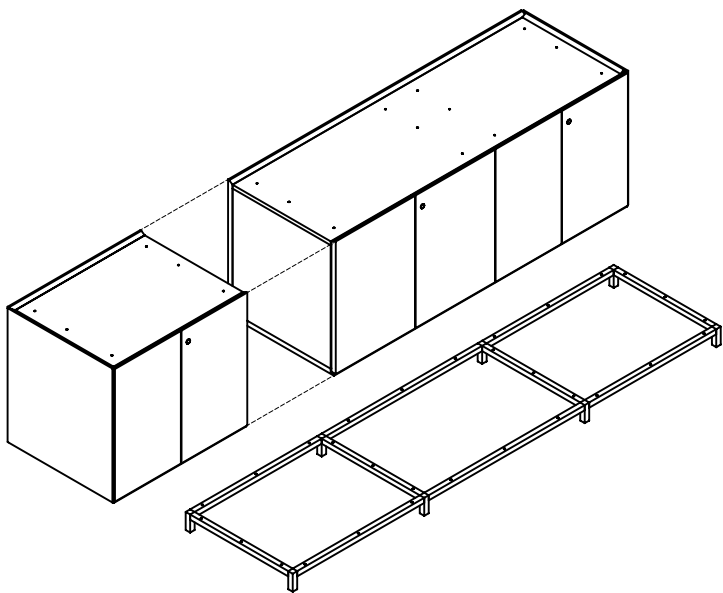


GENEVA STANDARD CONNECTIONS

2 PIECE CREDENZA ASSEMBLY

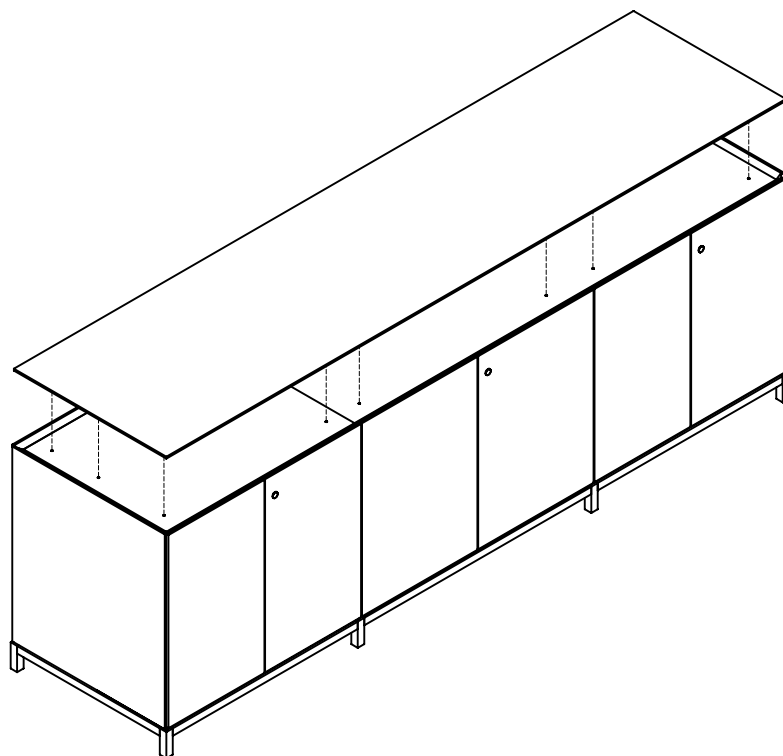
1. Assemble metal base, diagram and instructions listed on next page.
2. Move pedestal units together making sure outer surfaces are flush and attach with bolts provided in the hardware pack.

3. Using a padded mat and more then one person turn pedestal unit to lay on its top.
4. Place base on pedestal making sure all ends are flush and attach with screws provided in the hardware pack. (DO NOT USE ANY SCREWS IN THE FRONT FRAME BARS UNDER FACES.)



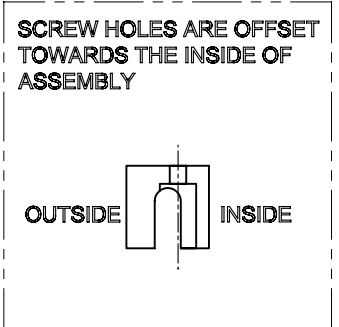
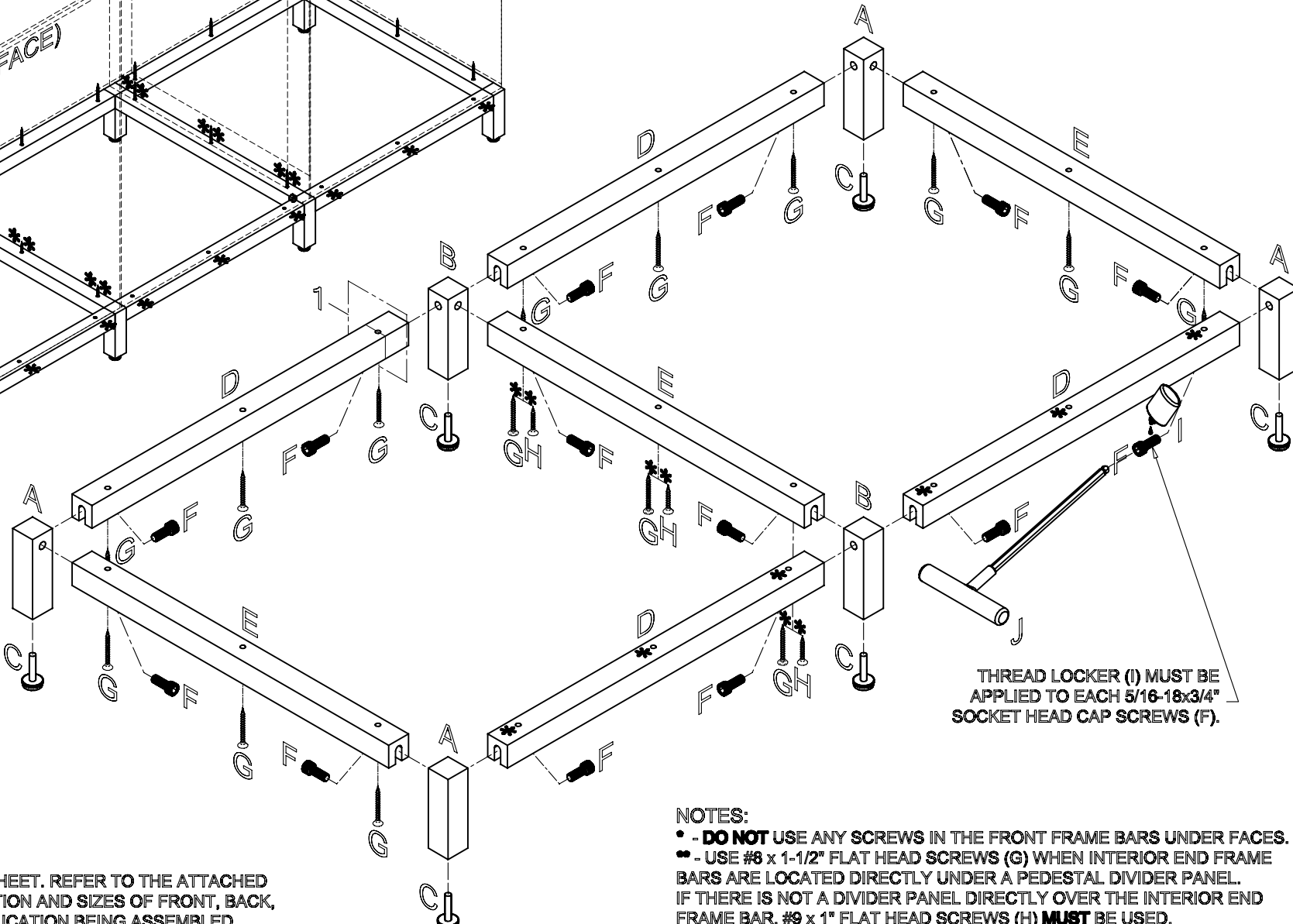
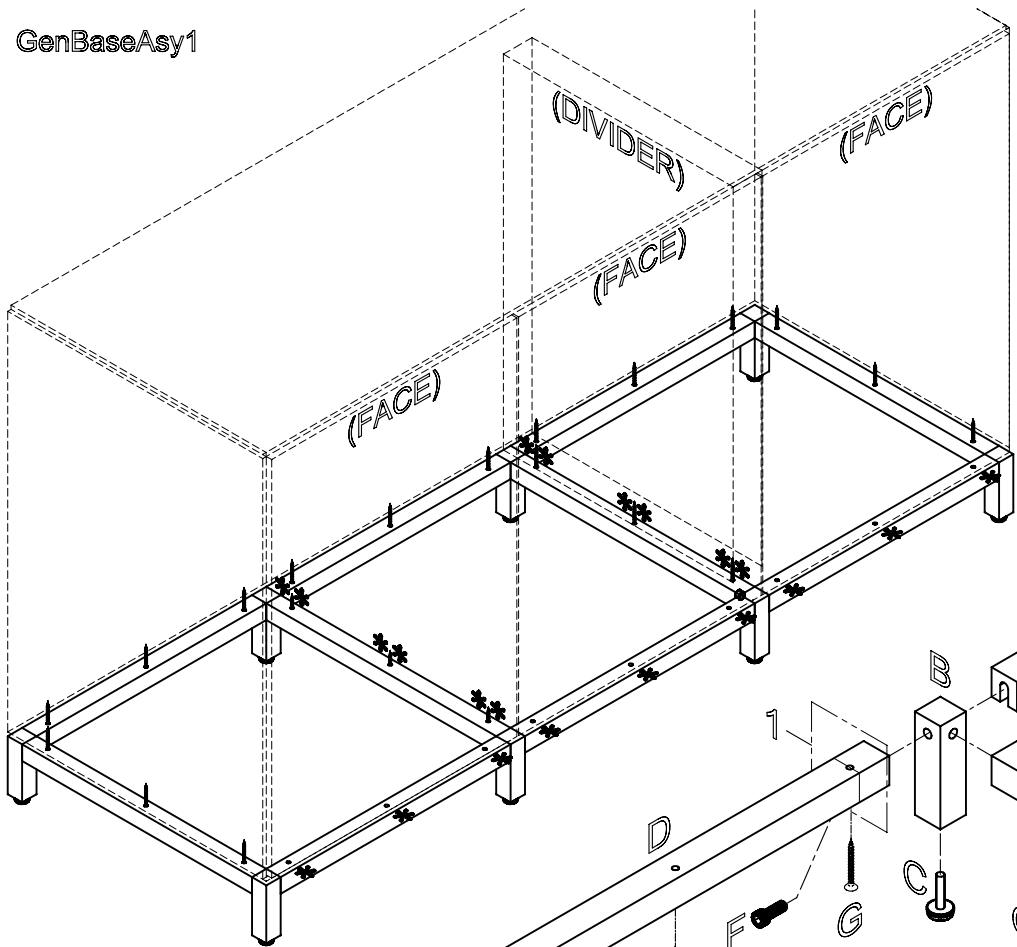
2 PIECE CREDENZA ASSEMBLY

5. Turn unit over to sit on base unit.
6. Align top with pedestal unit, and attach with screws provided in the hardware pack.



GENEVA BASE ASSEMBLY PARTS LIST

- A. CORNER LEG
- B. T-LEG
- C. LEVELER
- D. FRONT/BACK FRAME BAR
- E. END FRAME BAR
- F. 5/16-18 x 3/4" SOCKET HEAD CAP SCREW
- G. #8 x 1-3/4" FLAT HEAD WOOD SCREW
- H. #9 x 1" FLAT HEAD WOOD SCREW **
- I. THREAD LOCKER
- J. BALL END ALLEN WRENCH (NOT SUPPLIED)



DETAIL 1. THRU SCREW HOLE

THREAD LOCKER (I) MUST BE APPLIED TO EACH 5/16-18x3/4" SOCKET HEAD CAP SCREWS (F).

THIS IS A GENERAL ASSEMBLY SHEET. REFER TO THE ATTACHED ASSEMBLY DRAWING FOR LOCATION AND SIZES OF FRONT, BACK, AND END FRAMES FOR THE APPLICATION BEING ASSEMBLED.

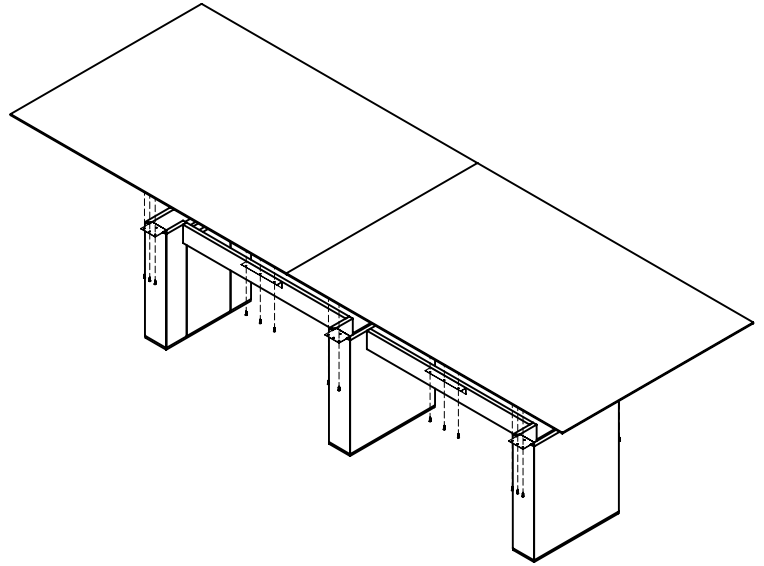
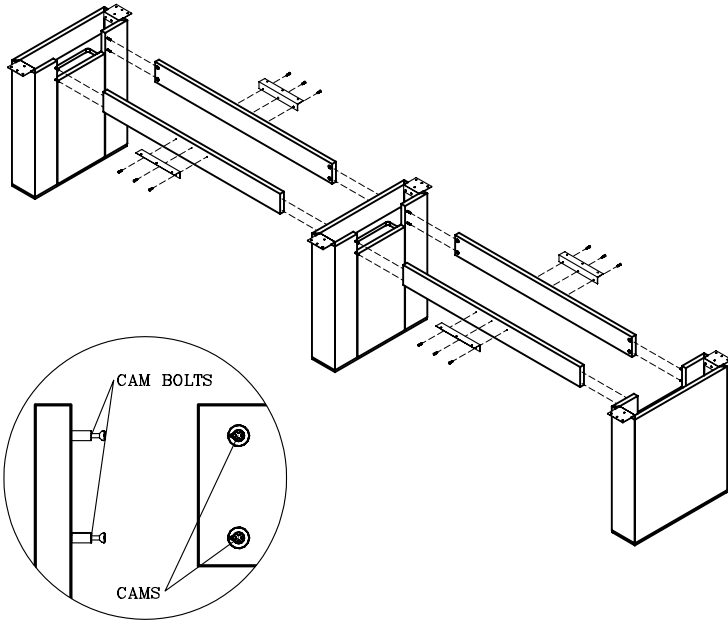
- NOTES:
- - **DO NOT** USE ANY SCREWS IN THE FRONT FRAME BARS UNDER FACES.
 - ** - USE #8 x 1-1/2" FLAT HEAD SCREWS (G) WHEN INTERIOR END FRAME BARS ARE LOCATED DIRECTLY UNDER A PEDESTAL DIVIDER PANEL. IF THERE IS NOT A DIVIDER PANEL DIRECTLY OVER THE INTERIOR END FRAME BAR, #9 x 1" FLAT HEAD SCREWS (H) **MUST** BE USED.

GENEVA STANDARD CONNECTIONS

CONFERENCE TABLE ASSEMBLY (PANEL BASE)

1. Attach 10" angle irons to support keels. (If there is only one iron, attach in center of keel. If there is more than one iron, space them evenly depending on the size of the table.) Use $\frac{5}{8}$ " PH screws provided in the hardware pack to attach angle irons.
2. Place cams in cam holes of support keels. (Arrows pointing outward)
3. Insert cam bolts into threaded holes in panel bases, then align cam bolts with cams installed in the support keels. (Cams and cam bolts are located in the hardware pack.)
4. Tighten cams by turning them clockwise until they are completely secure.

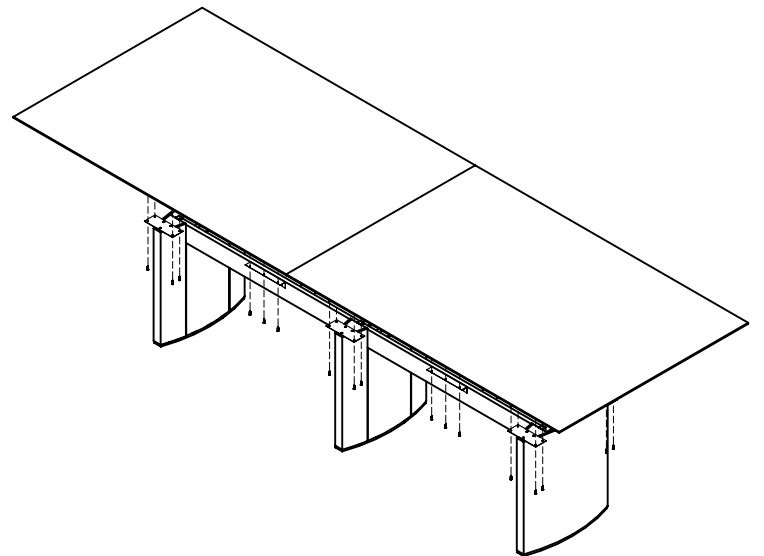
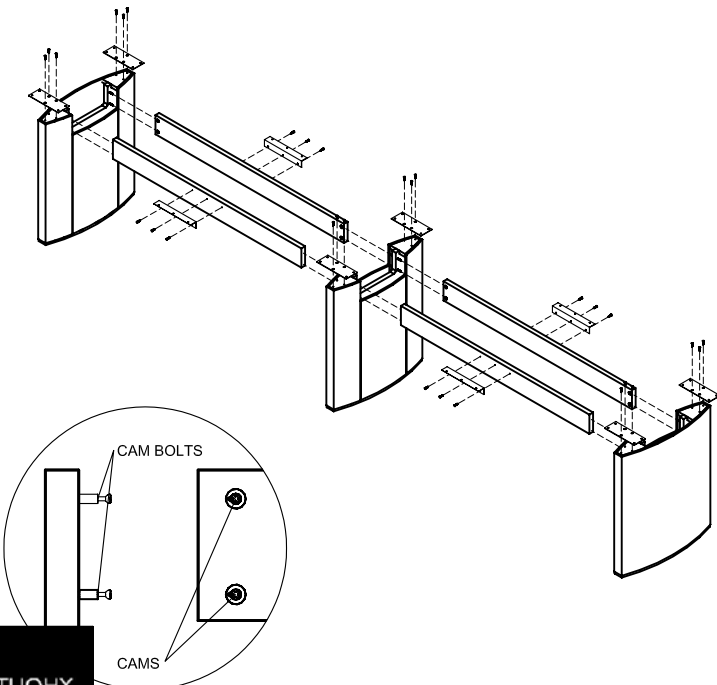
5. After the bases are assembled center the table top over the bases. Secure table top to the bases using screws provided in the hardware pack.



CONFERENCE TABLE ASSEMBLY (BOWED BASE)

1. Attach 10" angle irons to support keels. (If there is only one iron, attach in center of keel. If there is more than one iron, space them evenly depending on the size of the table.) Use $\frac{5}{8}$ " PH screws provided in the hardware pack to attach angle irons.
2. Place cams in cam holes of support keels. (Arrows pointing outward.)
3. Insert cam bolts into threaded holes in panel bases, then align cam bolts with cams installed in the support keels. (Cams and cam bolts are located in the hardware pack.)
4. Tighten cams by turning them clockwise until they are completely secure.

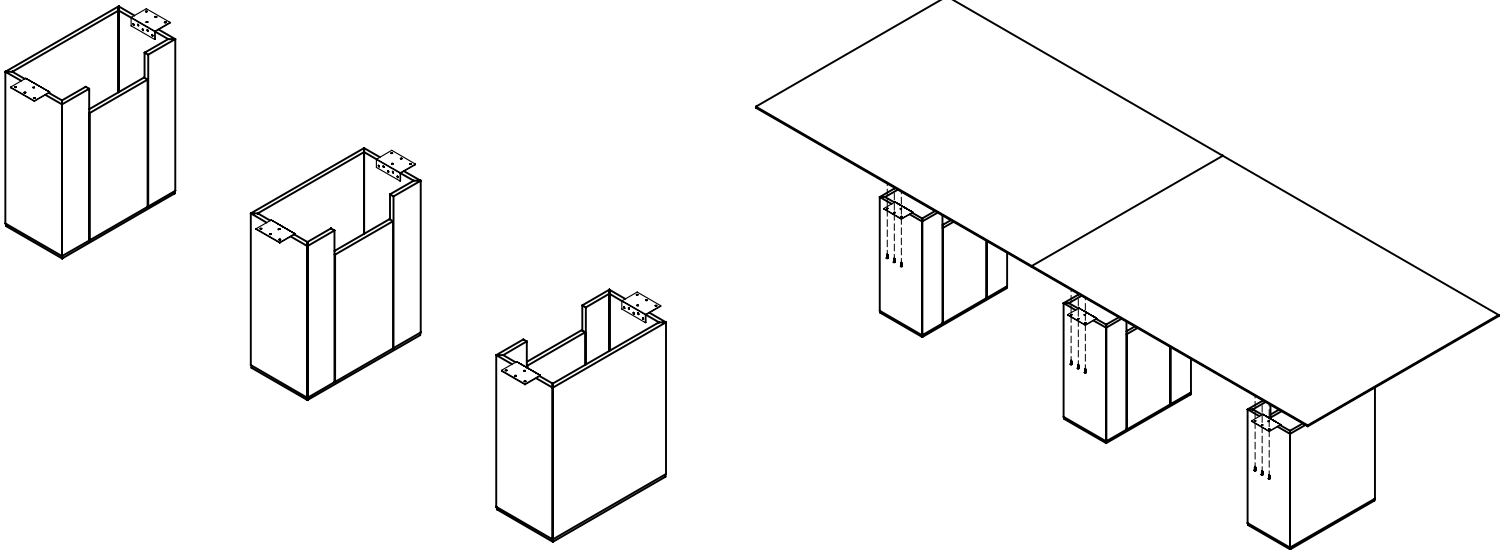
5. After the bases are assembled, center the table top over the bases. Secure table top to the bases using screws provided in the hardware pack.



GENEVA STANDARD CONNECTIONS

CONFERENCE TABLE ASSEMBLY (PLINTH BASE)

1. Align plinth bases in field using guild lines from chart below for different table sizes.
2. After the bases are set into place, center the table top over the bases. Secure table top to the bases using screws provided in the hardware pack.



CONFERENCE TABLE ASSEMBLY (PLINTH BASE)

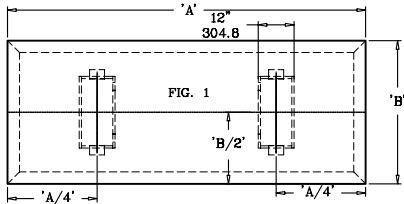


DIAGRAM 1 (For 1 piece tops)

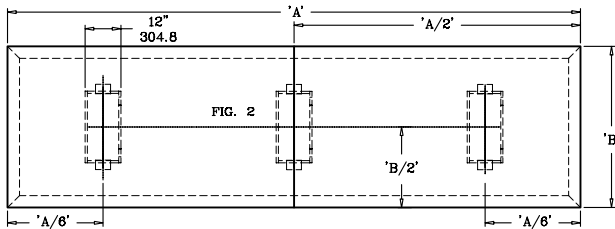


DIAGRAM 2 (For 2 piece tops)

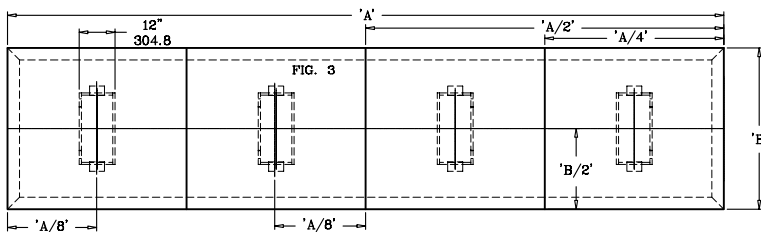
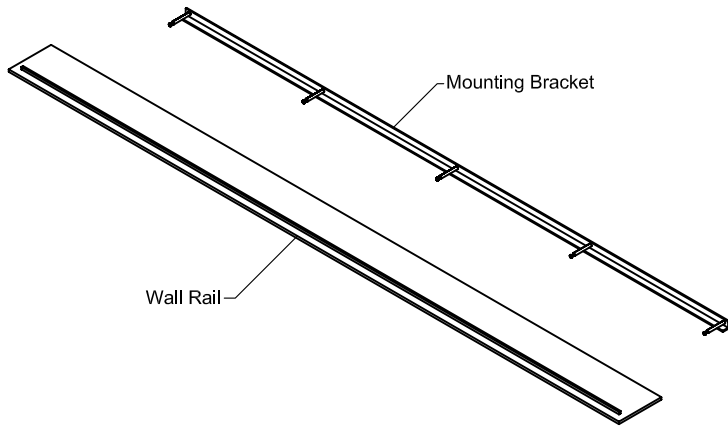


DIAGRAM 3 (For 4 piece tops)

GENEVA STANDARD CONNECTIONS

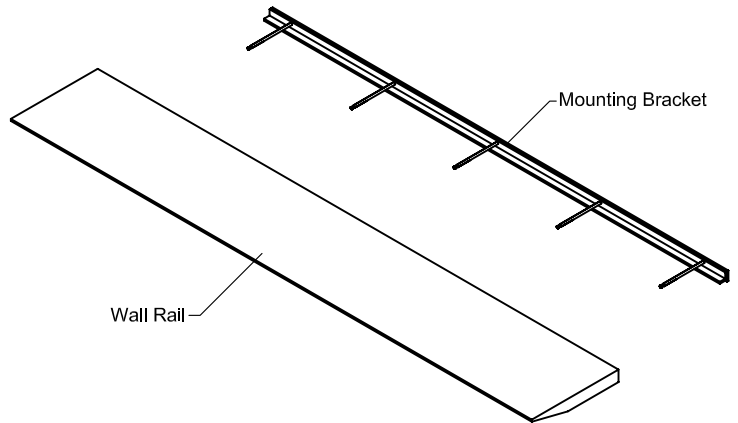
WALL RAIL ATTACHMENT

1. Loosen cams and remove mounting bracket from rear of wall rail. (Unit is shipped assembled.)
2. Drill holes in mounting bracket before attaching to the wall, find suitable wall support, then level and attach mounting bracket to the wall.
3. Align the cam bolts on the mounting bracket with the pre-drilled holes in the rail, slide the rail into place, and tighten cam bolts on the bottom of the rail.



WALL SHELF ATTACHMENT

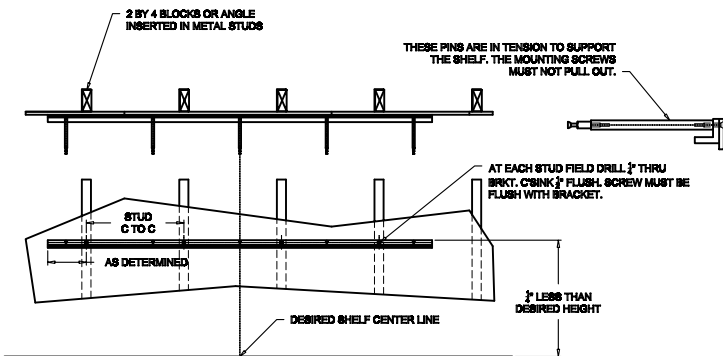
1. Loosen cams and remove mounting bracket from rear of shelf. (Unit is shipped assembled.)
2. Drill holes in mounting bracket before attaching to the wall, find suitable wall support, then level and attach mounting bracket to the wall.
3. Align the cam bolts on the mounting bracket with the pre-drilled holes in the shelf, slide the shelf into place, and tighten cam bolts on the bottom of the shelf.



WALL SHELF ATTACHMENT

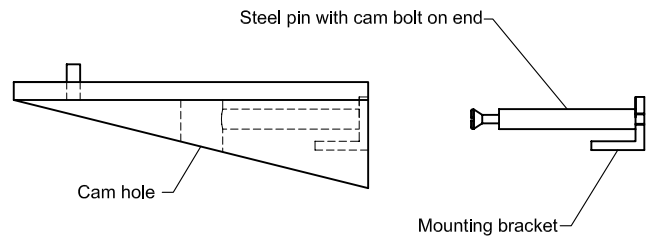
The installed shelf and load will approach 60 pounds per linear foot. The mounting bracket must be firmly attached to the wall. (Concrete or masonry is best.) Toggles in sheet rock or screws in metal studs will fail. Wood studs with at least #12 wood screws will work. If metal studs are encountered they must be reinforced with $\frac{1}{4}$ " steel angles or 2 x 4 blocks at a minimum.

The top edge of the angle is to be leveled. The finished surface of shelf will be $\frac{1}{4}$ " higher.



WALL RAIL

Side view of wall rail shown in picture below.



WALL SHELF

Side view of wall shelf shown in picture below.

