

INSTALLATION GUIDE
Prato Collection

April 1, 2017

TUOHY



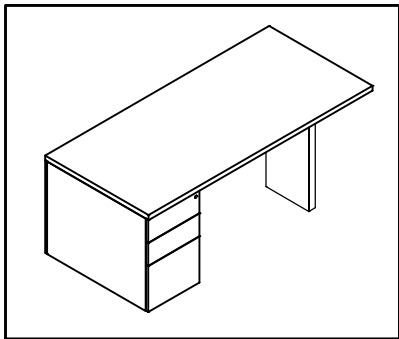
TABLE OF CONTENTS

TABLE - DESKS	1
CREDENZAS	2
CREDENZA ACCESSORIES	3
RUNOFF / BRIDGE CONNECTION	4
RUNOFFS	5
TOWERS.	6
WALL HUTCHES.	7
BACKSPLASH.	8
INSTALLATION MATRIX	9
CANOPY.	10
TOP DIVIDER PANEL	11

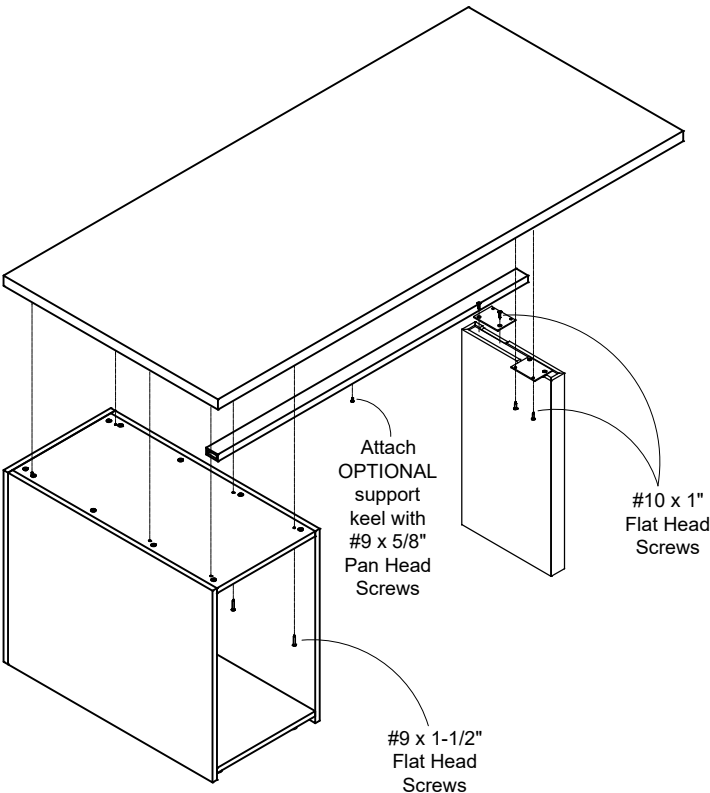
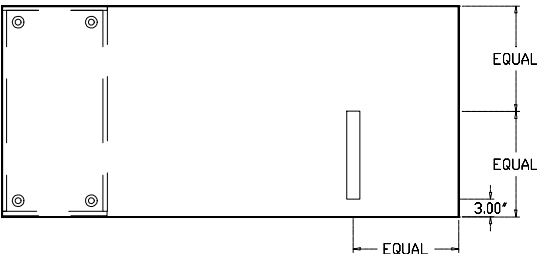
TABLE - DESKS

TUOHY

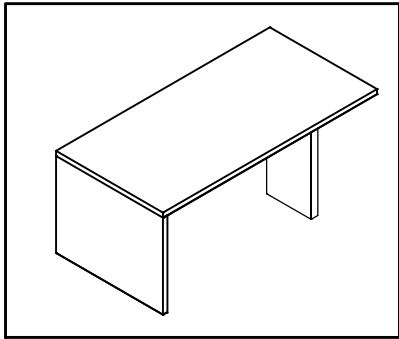
PEDESTAL, LEG TABLE-DESK



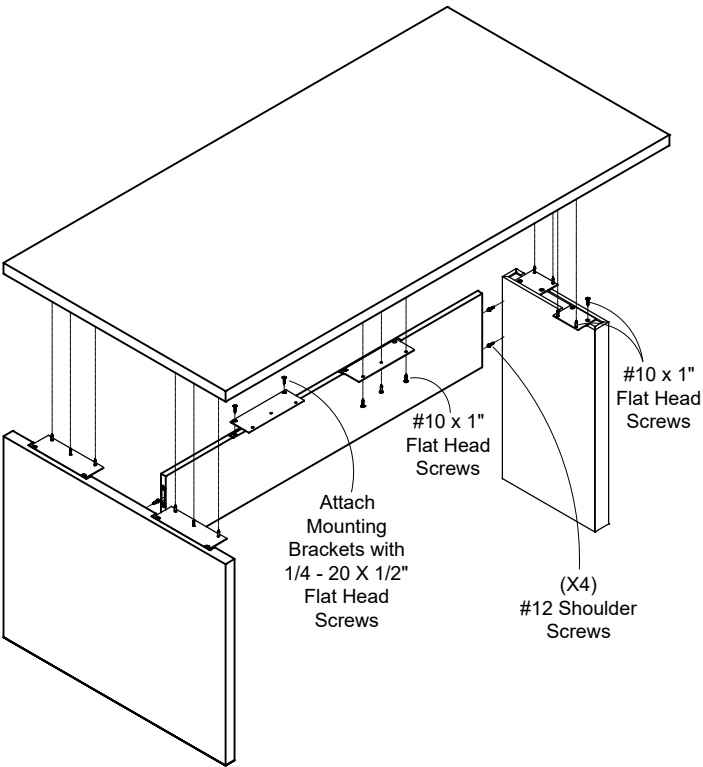
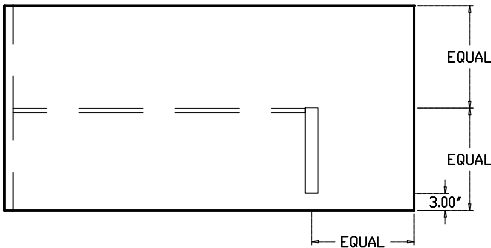
COLUMN LEG PLACEMENT



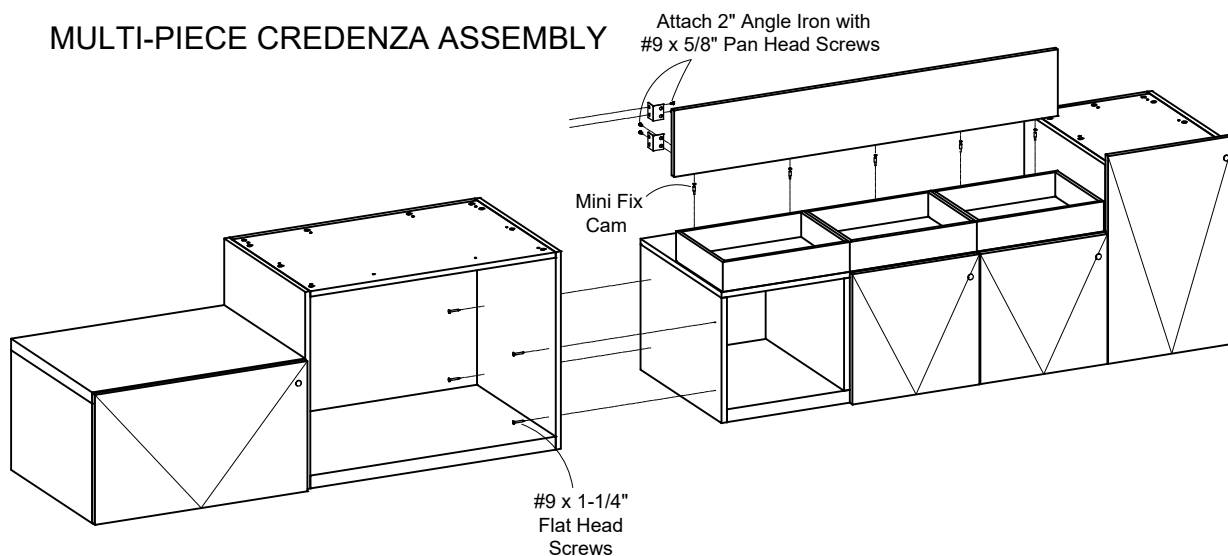
PANEL, LEG TABLE-DESK



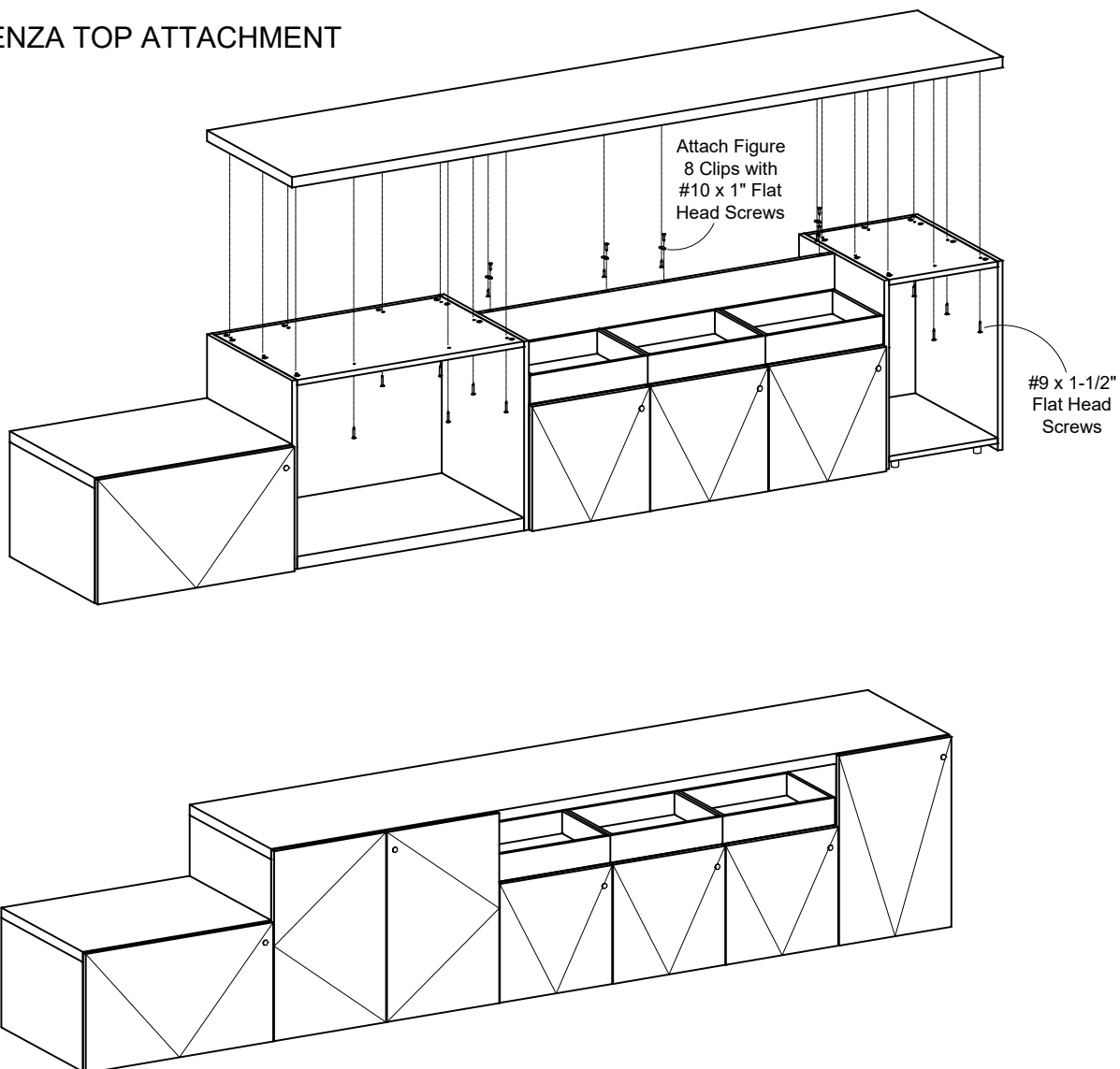
COLUMN LEG PLACEMENT



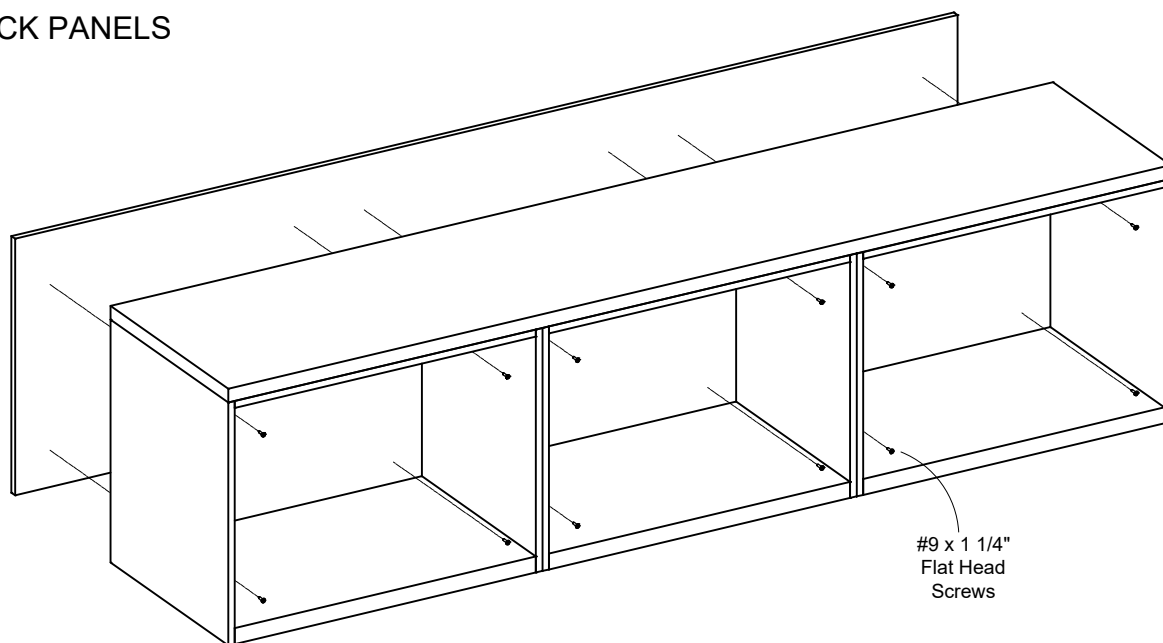
MULTI-PIECE CREDENZA ASSEMBLY



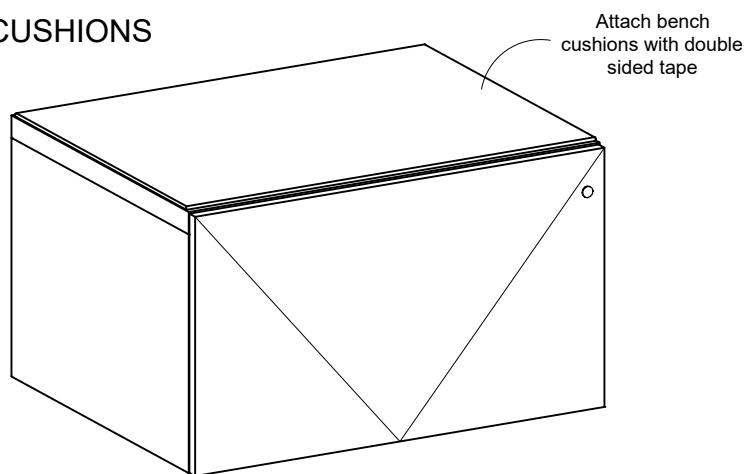
CREDENZA TOP ATTACHMENT



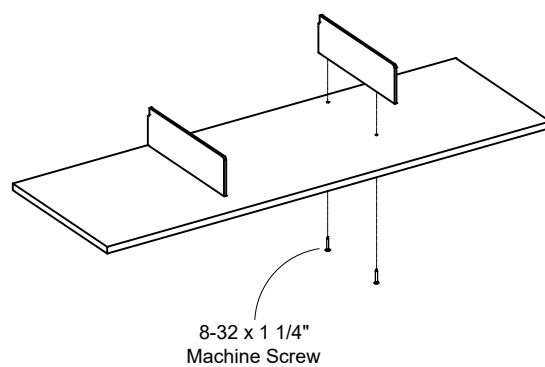
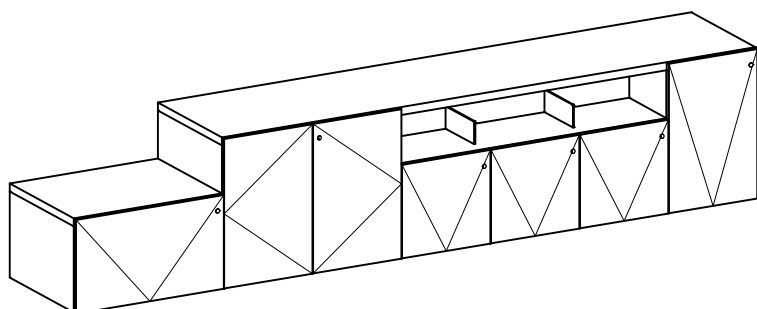
BACK PANELS



BENCH CUSHIONS



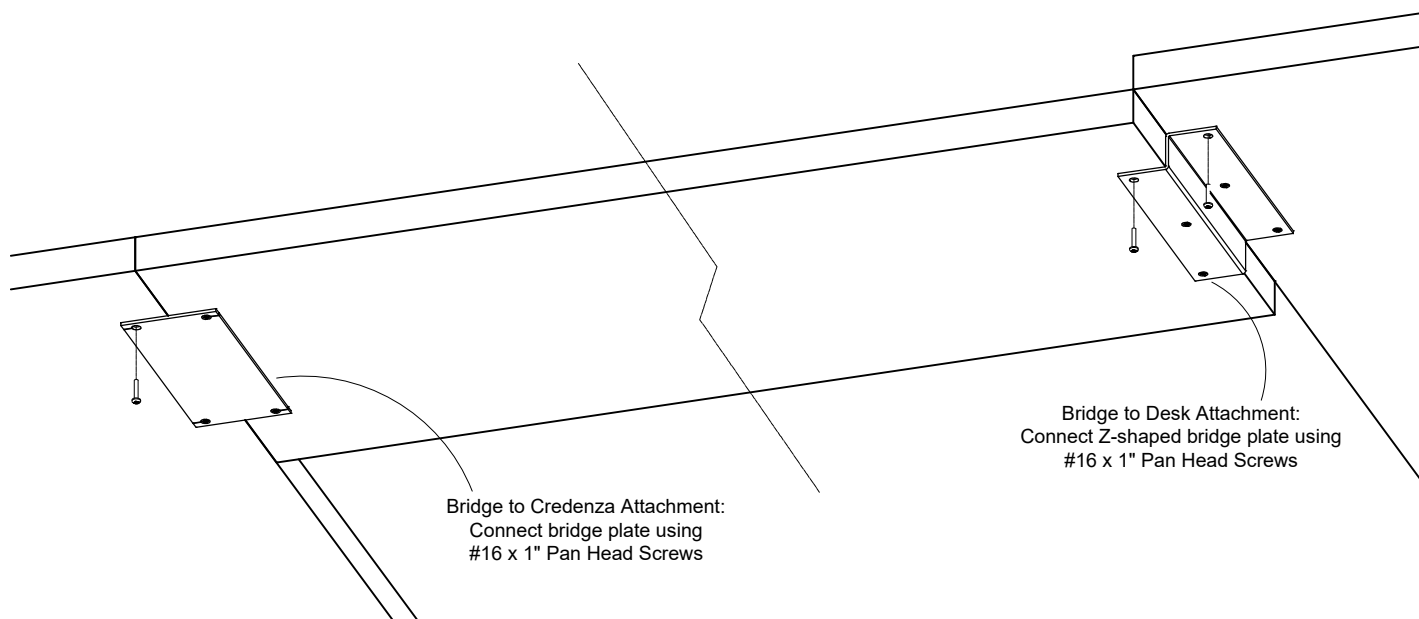
CB DIVIDERS



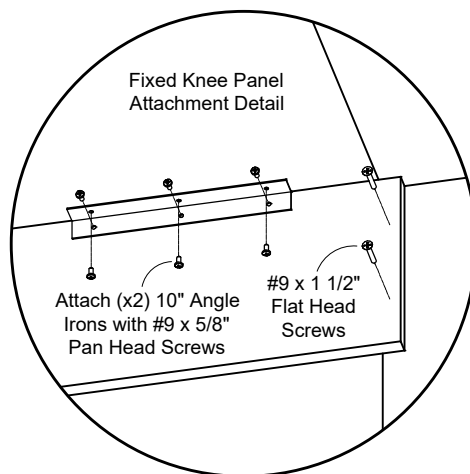
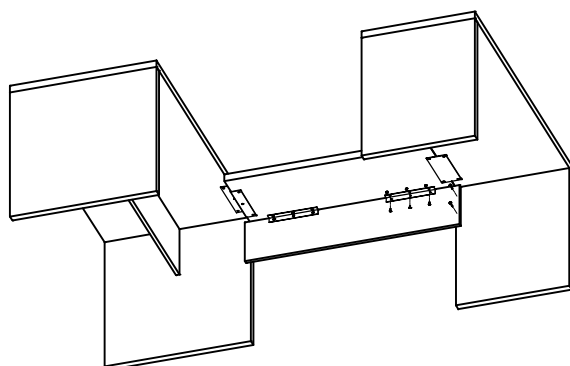
RUNOFF / BRIDGE TOP CONNECTION

TUOHY

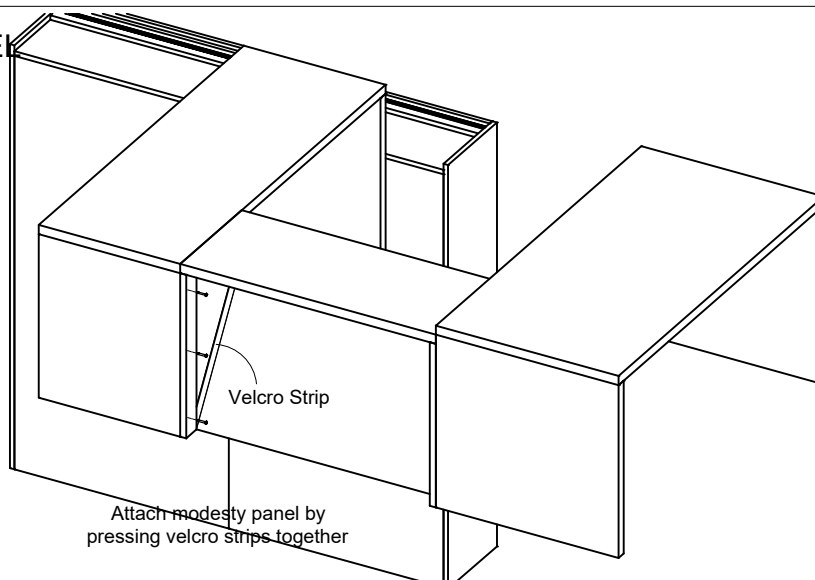
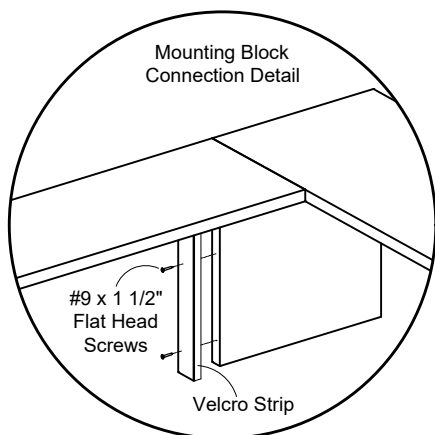
TOP CONNECTIONS



FIXED KNEE PANEL CONNECTION



REMOVABLE KNEE PANEL CONNECTION

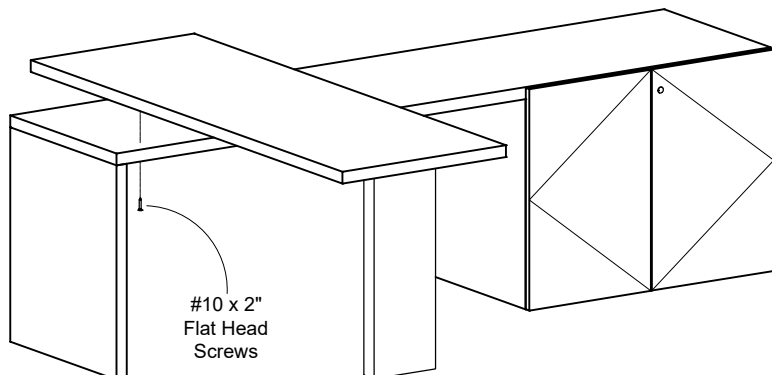


RUNOFFS

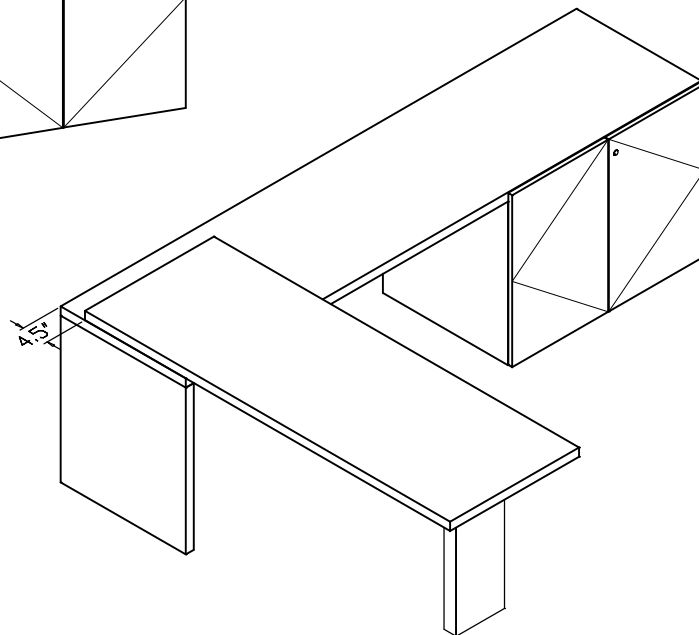
(See Page 1 for Panel Leg and Column Attachment.)

TUOHY

OVERLAY TOP ATTACHMENT

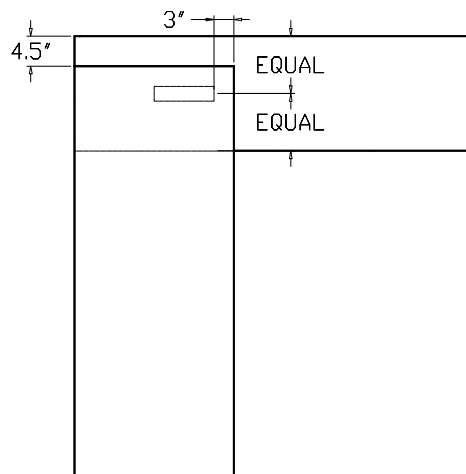
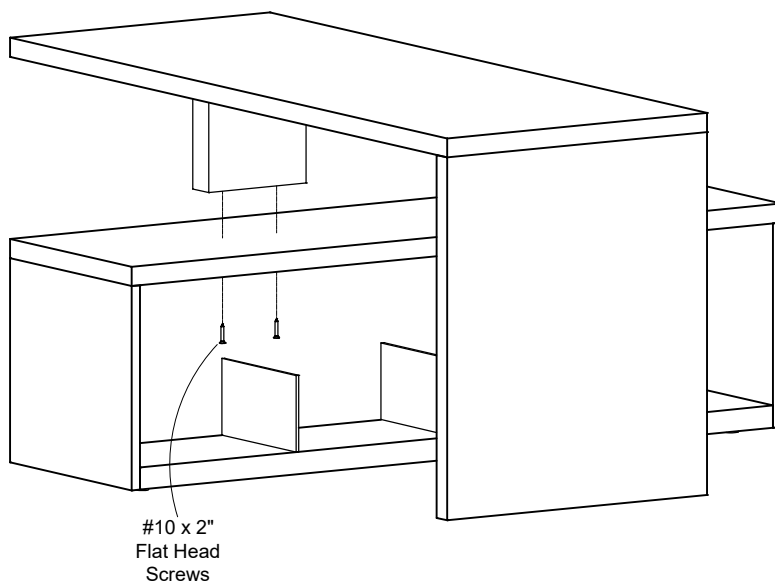


Locate runoff top on lower credenza, and attach with #10 x 2" Flat Head Screws or Double Sided Tape.



DEMI COLUMN ATTACHMENT

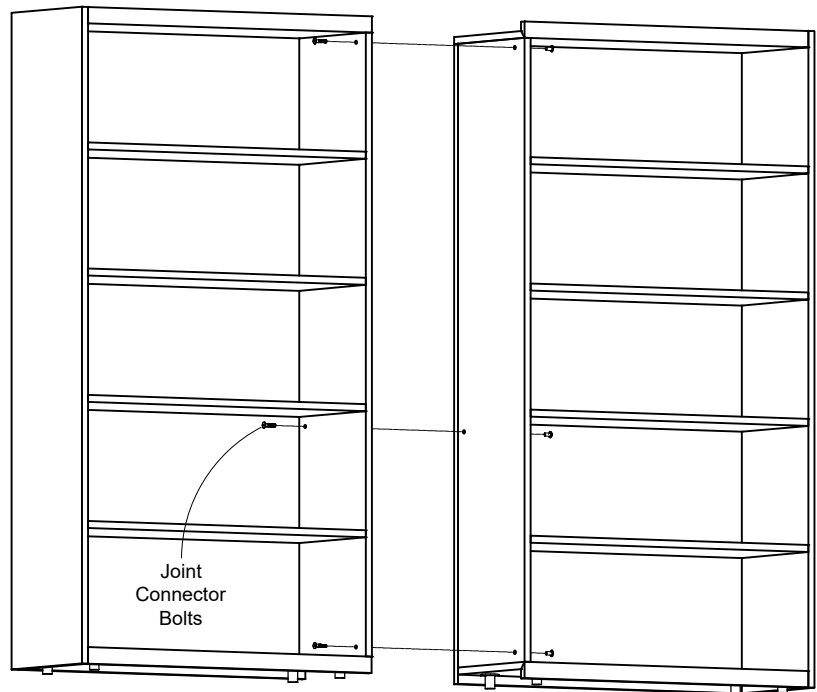
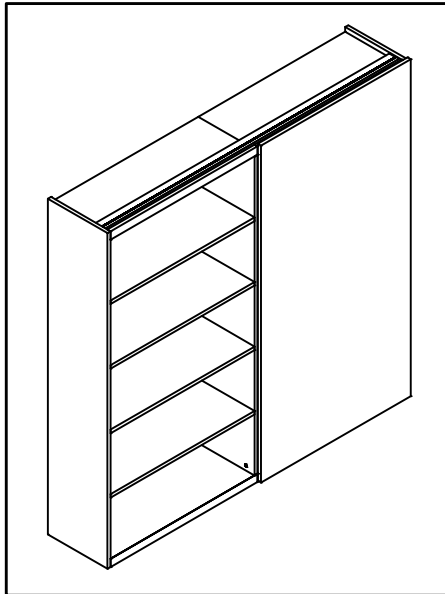
Locate leg on lower credenza, mark locations & pre drill holes for attachment.



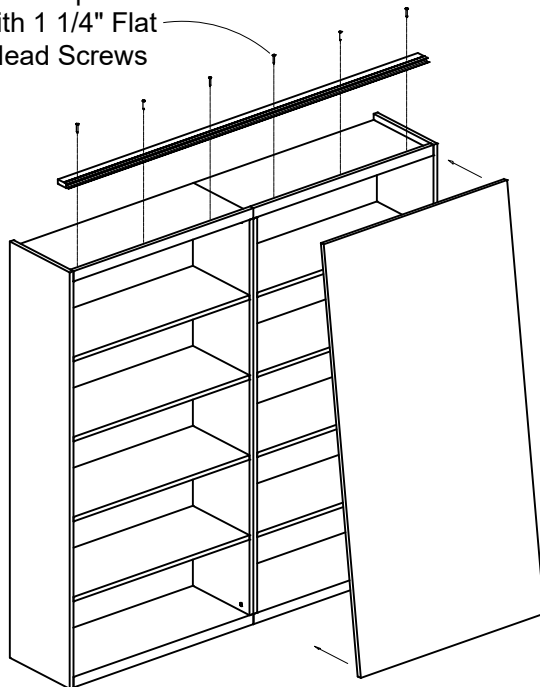
TOWERS

TUOHY

SLIDING DOOR TOWERS



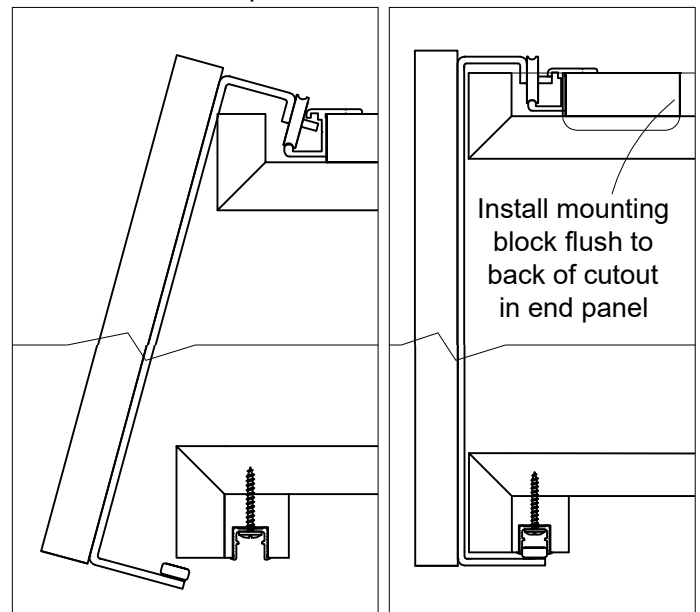
Install top track
with 1 1/4" Flat
Head Screws



Lower track is
pre-installed

Mounting Sliding Door to Cabinet

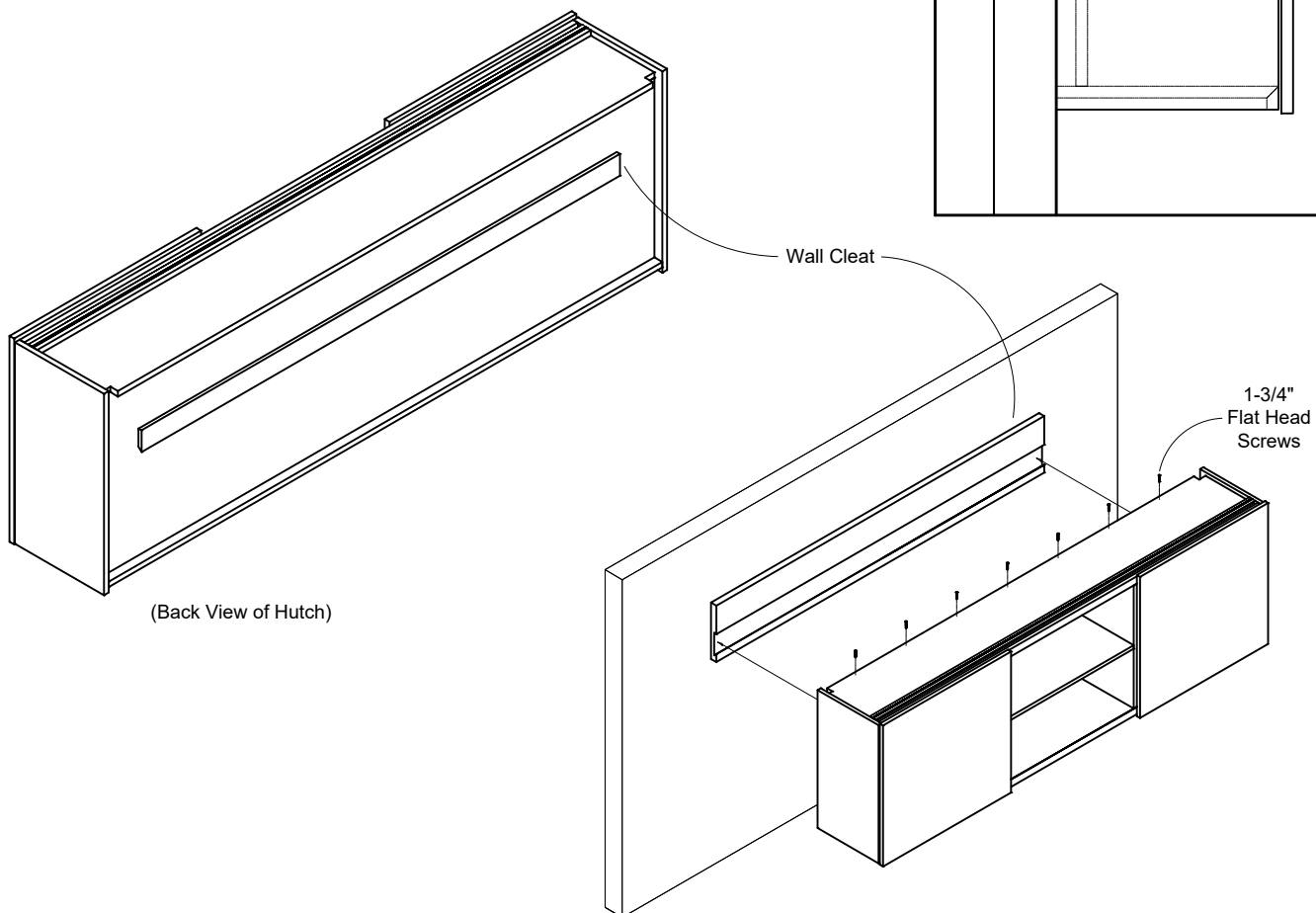
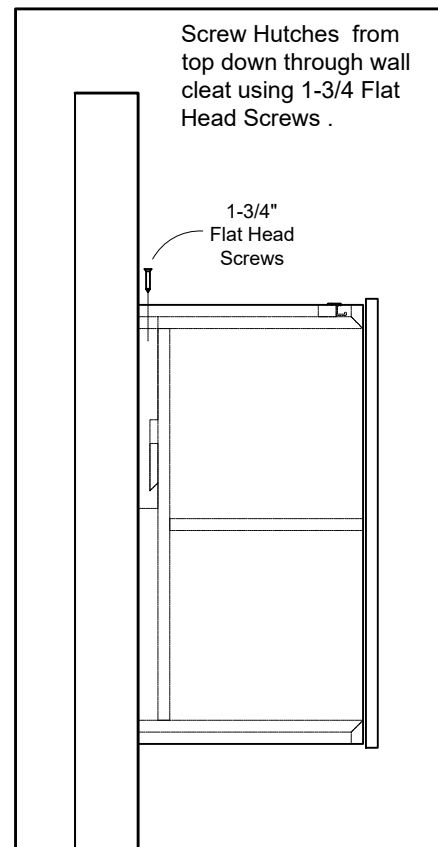
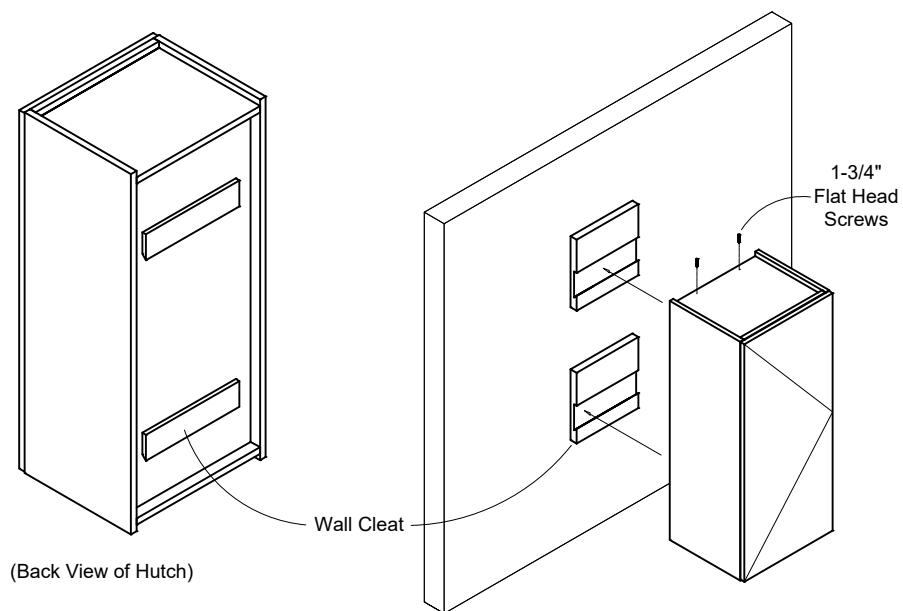
Top Attachment



Bottom Attachment

WALL HUTCHES

TUOHY

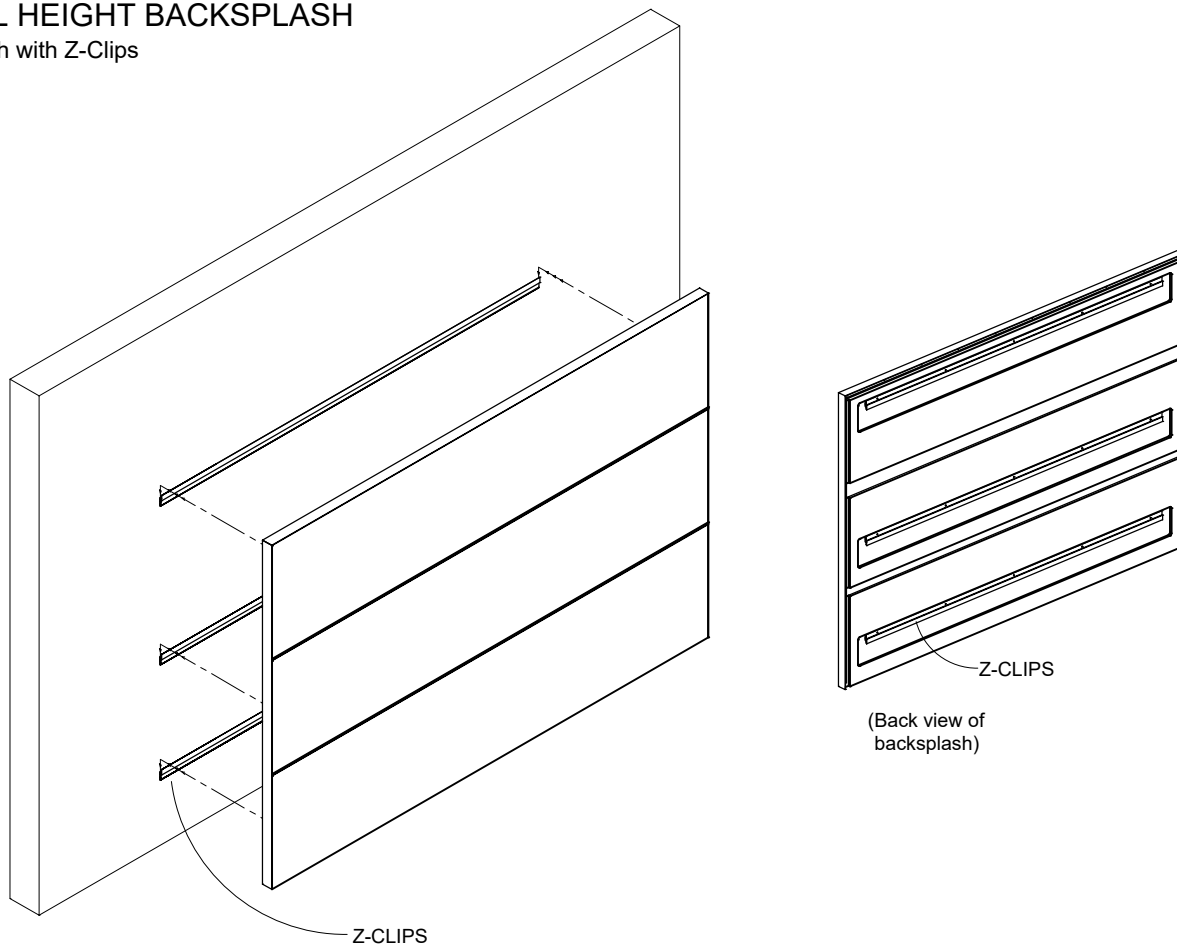


BACKSPLASH

TUOHY

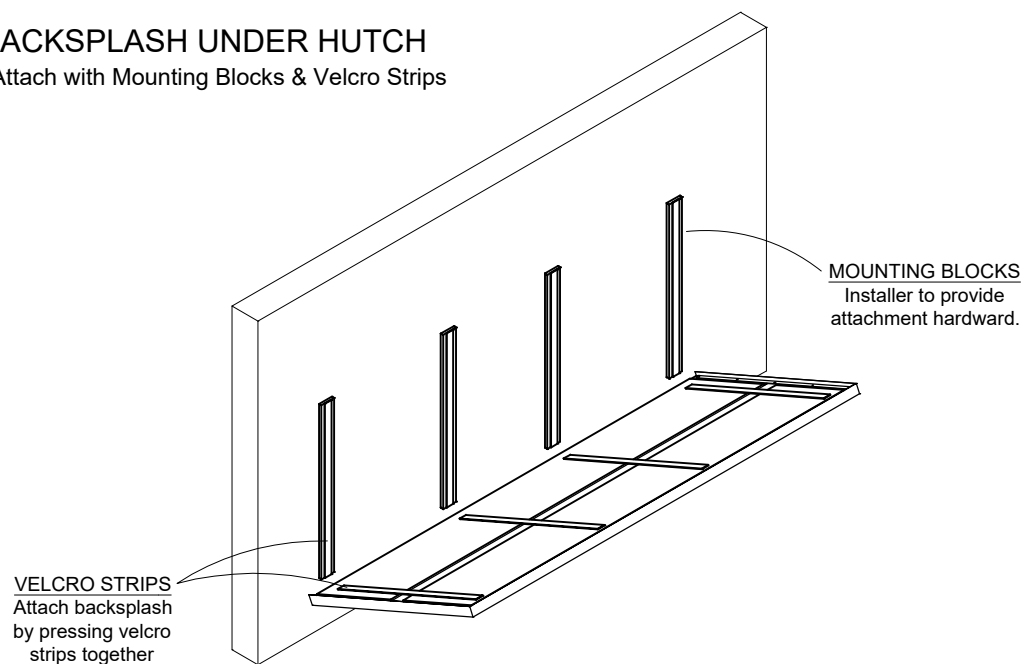
FULL HEIGHT BACKSPLASH

*Attach with Z-Clips



BACKSPLASH UNDER HUTCH

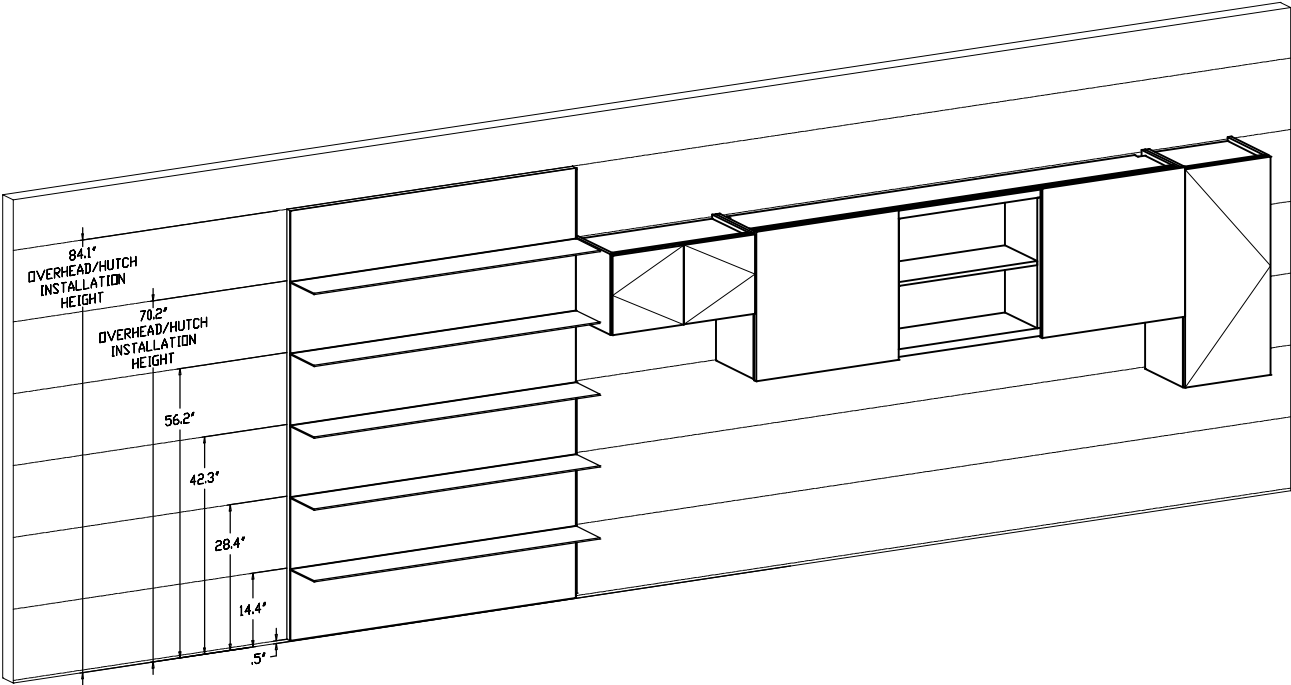
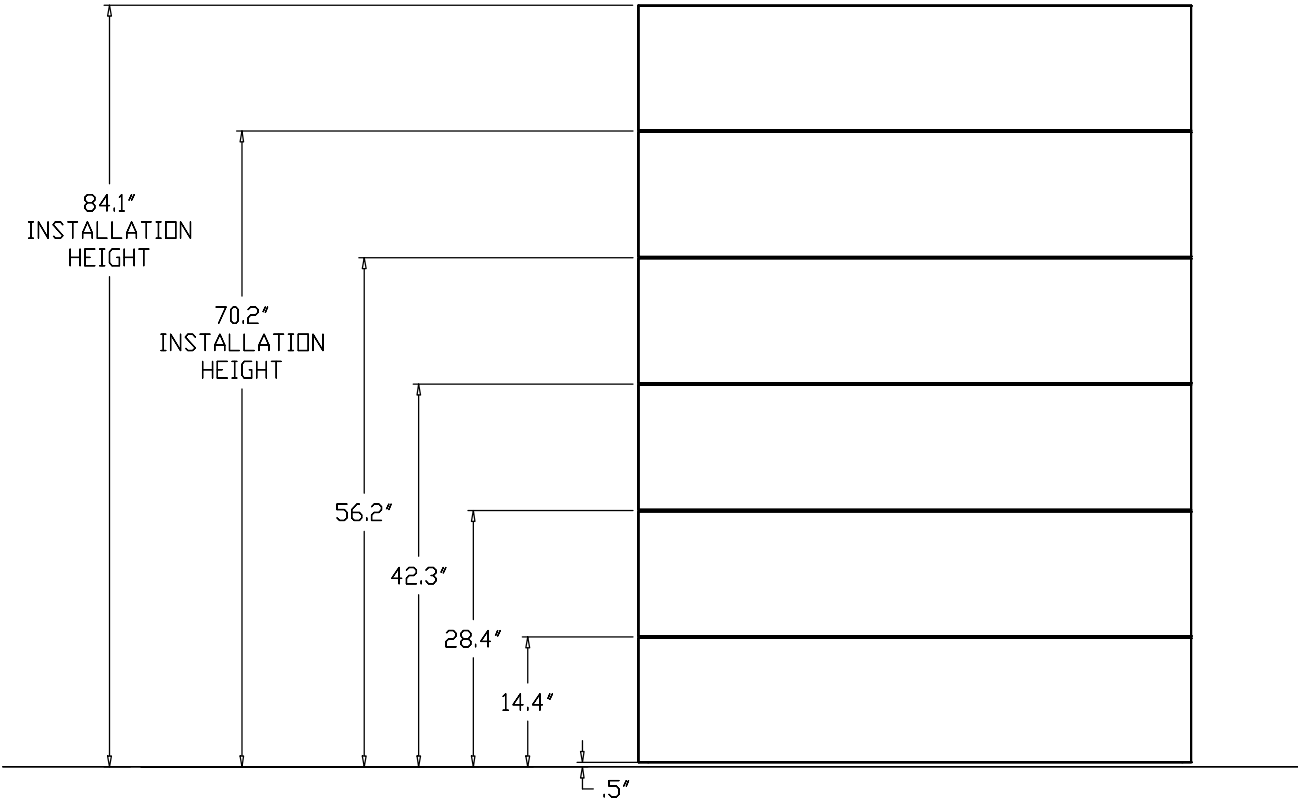
*Attach with Mounting Blocks & Velcro Strips



HUTCH AND BACKSPLASH INSTALLATION ALIGNMENT

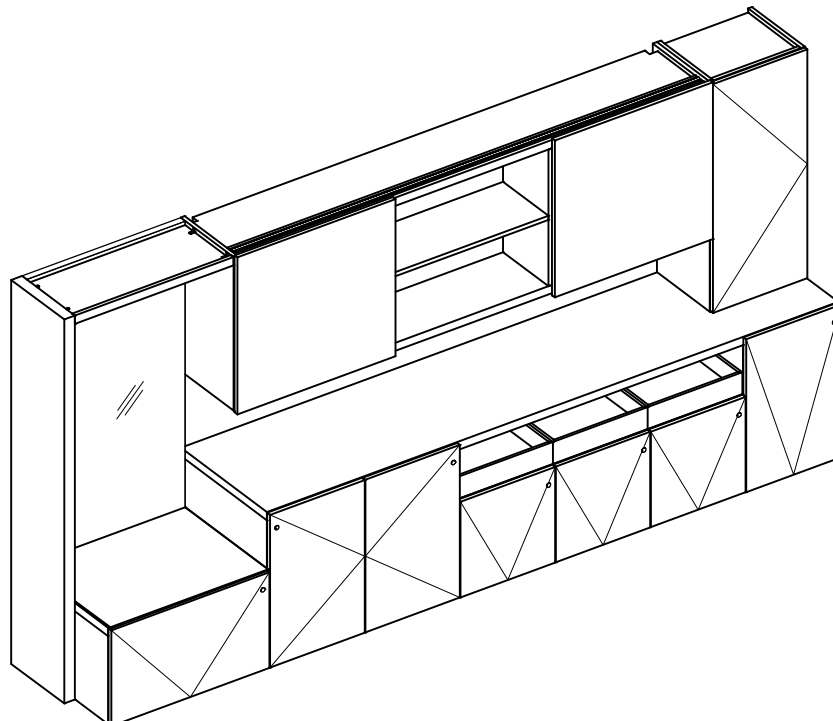
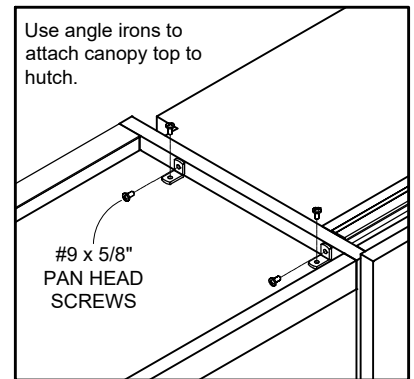
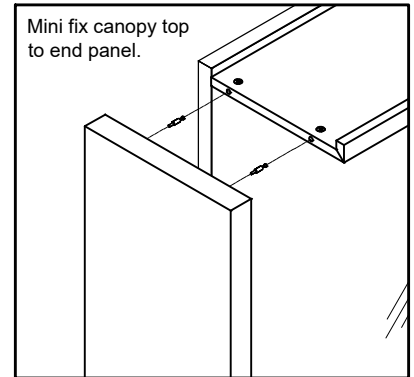
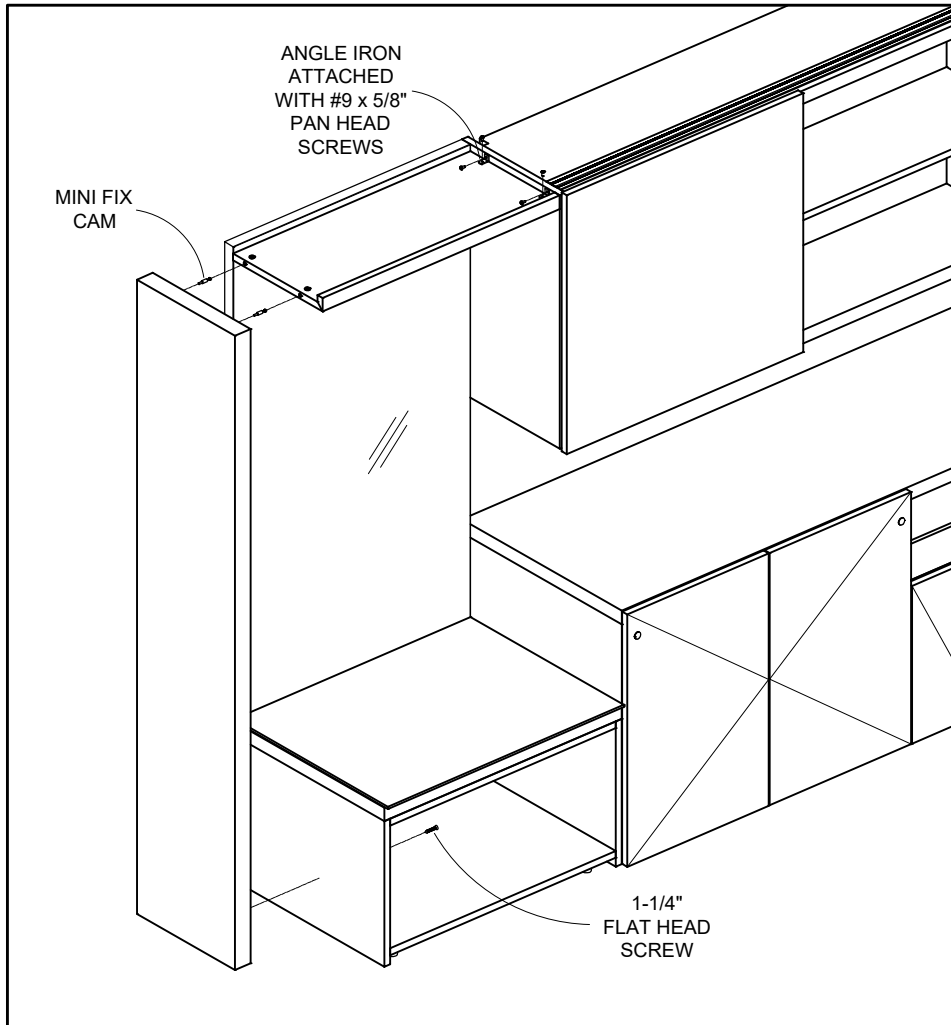
TUOHY

MATRIX LAYOUT



CANOPY

TUOHY



(UNDERSIDE VIEW)

