

**Upholstery Partnerships**

FABRICS      LEATHER  
Designtex    Lena  
KnollTextiles FAUX-LEATHER  
Maharam      Silex

June 1, 2021

TUOHY



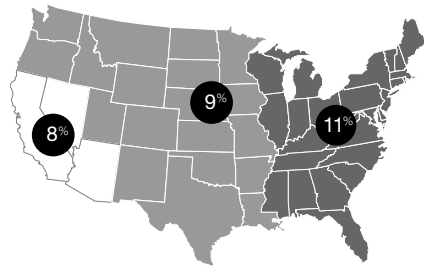
## Upholstery Policies

### Seating Freight/Handling Fees:

Freight/handling fees are charged on a regional basis, as shown in the map below.

These fees are pre-calculated and prepaid by TUOHY and added to the invoice at the time of shipment. Should additional charges be incurred by TUOHY due to delivery issues (non-dock, re-delivery, etc.) after initial billing, the customer may be liable for those additional charges.

The title of goods changes when merchandise leaves TUOHY's dock. Any subsequent freight damage and all freight claims are the responsibility of the purchaser or consignee to report to the carrier promptly upon receipt and the settle with the carrier.



**COM/COL:** TUOHY accepts COM fabrics and COL leathers for consideration on its products. To verify suitability of your selection, inquire with Customer Service for information from our Fabric Analysis Program. Upholsteries not listed in this program must be submitted for approval prior to acceptance of an order; submit a 12 x 12 sample prior to entering your order. Your purchase order must include an upholstery specification that has been approved by TUOHY.

**COM/COL:** TUOHY accepts COM fabrics and COL leathers for consideration on its products. To verify suitability of your selection, inquire with Customer Service for information from our Fabric Analysis Program. Upholsteries not listed in this program must be submitted for approval prior to acceptance of an order; submit a 12 x 12 sample prior to entering your order. Your purchase order must include an upholstery specification that has been approved by TUOHY.

All COM/COL requirements are based on whole pieces of material; split shipments are not allowed. We are not responsible for COM/COL upholstery wear, defects, or its appropriateness.

COL leather requirements are listed in square feet and based on hides that are 40 square feet or larger. For hides below 40 square feet add 15% to the footage requirements; for calf hides below 30 square feet add 30% to the footage requirements.

Our pricing includes labor for applying upholstery and is based on applying only one type of color way per item of furniture, with no specific relationship between the pattern or weave of the upholstery material and the configuration of the item of furniture.

A surcharge not to exceed 15% of the COM price will be added when vinyl is used and/or multiple upholsteries or colorways are applied to the same product. These circumstances may create the need for additional yardage; contact Customer Service for details prior to ordering.

If additional labor is required because of unique characteristics of the fabric, a special quote will be required.

Fabric/vinyl yardage requirements and leather square footage requirements are shown throughout this price list. Fabric and vinyl requirements are based on upholstering one unit, using a single, continuous 54-in wide material, off-the-roll, with minimal (under 2-in) repeat in any direction. Inquire about lower per-unit yardage requirements on orders of more than one unit.

Verify whether individual product listings in this price schedule call for greater allowances for this additional yardage.

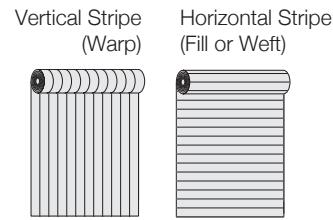
Patterned fabrics and vinyls may be railroaded on request but are subject to a surcharge and/or additional yardage requirements.

Seams will be required when the product application width is greater than the usable roll width, whether off-the-roll or railroaded.

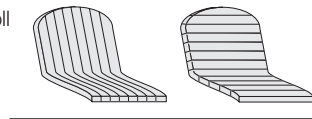
Additional yardage may be required if roll width is less than 54 inches or a pattern requires matching due to repeat. The chart at right will be helpful as a general guide. Please confirm with our Customer Service Department on specifics regarding selections for your project. Changes in yardage requirement will affect upholstery grading in TUOHY Upholstery Partnership Programs.

Note that repeat is the sum of horizontal and vertical repeats; headings are listed in inches:

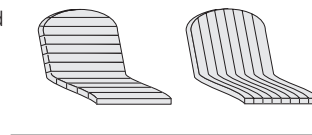
**Table 1: Pattern Direction**



Off-the-Roll



Railroaded



Fire Rating: All upholstered pieces pass Cal-117. For Cal-133 or Boston Fire, contact Customer Service at (507) 867-4280.

### Yardage and Grade Adjustments for Roll Width and/or Pattern Repeat

WIDTH	HORIZONTAL + VERTICAL REPEAT							
	<2	2-10	11-20	21-25	26-30	31-35	36-40	41-45
54	0%	10%	15%	20%	25%	30%	35%	40%
51-53	15%	20%	25%	30%	35%	40%	45%	50%
48-50	30%	35%	40%	45%	50%	55%	60%	65%
45-47	45%	50%	55%	60%	65%	70%	75%	80%
36-44	60%	65%	70%	75%	80%	85%	90%	95%

Quoted delivery dates run from the date on which we receive your material. Excess fabric will not be returned or stored unless specifically requested in writing with your order; freight to be collect.

Ship-to address for COM/COL materials and memo samples varies by product line. Please consult individual product listings and look for these graphical keys for identifying the correct address.



**All seating except 902 & Bau Benches**



**902 Seating & Bau Benches  
All casegood fabric panels & bench pads  
All conference table top inserts**

#### COM/COL Materials:

TUOHY Furniture Corporation  
Upholstery Receiving Dept  
13715 S Western Ave  
Gardena, CA 90247-2515

#### Memo Samples:

TUOHY Furniture Corporation  
Memo Receiving Dept  
1224 W 132nd St  
Gardena, CA 90247-1506

#### COM/COL Materials & Memo Samples:

TUOHY Furniture Corporation  
P1 Upholstery Receiving  
42 Saint Albans Place  
Chatfield, MN 55923-1457

Please provide tagging information as needed for your project.



UPHOLSTERY PARTNERSHIPS

# DESIGNTEX

June 1, 2021

TUOHY









**\*\*Grading Note:** Due to the current volatility of fabric pricing, we will no longer be listing grades on our website.  
Please see your customer service representative for current graded price.



When backing is required, the surcharge will be \$341  
List for 5 – 22 yds; over 22 yds is \$15.50 List per yd.  
Add 1 week to lead time.

**Evaluation Codes by Product**

February 1, 2020

Pattern Name	Pattern Number	Evaluation	Grade**	Material Req'd	Backings Req'd	902	Aim	Arcelle	Bau	Bryant Park	Domino	Edo	Fabric Panels	Genevieve	International	International II	Kaesi	Leit	Moderna	Ren	Selone	Vita
Pivot	3374	Approved	+0%			Y	Y	Y	Y	Y	Y	Y	Y	Y	Y	Y	Y	Y	Y	Y	Y	Y
Pixel	3826	Caution	Quote			S	S	S		RSU	SU	SU		RSU	RSU	SU	STU	SU	SU	SU	RSU	SU
Pixel Cloud	3886	Unsuitable	10%			ABZ	ABZ	ABZ	ABZ	ABZ	ABZ	ABZ	ABZ	ABZ	ABZ	ABZ	ABZ	ABZ	ABZ	ABZ	ABZ	ABZ
Plaid	3782	Caution	+25%			BCS	BCS	BCS	BC	BCRSU	BCSU	BCSU	BC	BCRSU	BCRSU	BCSU	BCSTU	BCSU	BCSU	BCSU	BCRSU	BCSU
Plexus	3129	Unsuitable	+25%			ABZ	ABZ	ABZ	ABZ	ABZ	ABZ	ABZ	ABZ	ABZ	ABZ	ABZ	ABZ	ABZ	ABZ	ABZ	ABZ	ABZ
Plus	3042	Caution	+0%			S	S	S		RSU	SU	SU		RSU	RSU	SU	STU	SU	SU	SU	RSU	SU
Prime	3602	Caution	+0%			Y	Y	Y	Y	Y	Y	Y	Y	Y	Y	Y	Y	Y	Y	Y	Y	Y
Queue	3811	Unsuitable	+20%			HZ	HZ	HZ	HZ	HZ	HZ	HZ	HZ	HZ	HZ	HZ	HZ	HZ	HZ	HZ	HZ	HZ
Raia	3157	Caution	+25%			S	S	S		RSU	SU	SU		RSU	RSU	SU	STU	SU	SU	SU	RSU	SU
Rainwater	3837	Caution	+15%			S	S	S		RSU	SU	SU		RSU	RSU	SU	STU	SU	SU	SU	RSU	SU
Reppweave	3747	Unsuitable	+0%			AZ	AZ	AZ	AZ	AZ	AZ	AZ	AZ	AZ	AZ	AZ	AZ	AZ	AZ	AZ	AZ	AZ
Rider	3007	Caution	+0%			S	S	S		RSU	SU	SU		RSU	RSU	SU	STU	SU	SU	SU	RSU	SU
Rise	3809	Approved	+0%			Y	Y	Y	Y	Y	Y	Y	Y	Y	Y	Y	Y	Y	Y	Y	Y	Y
Rocket	2693	Caution	+0%			S	S	S		RSU	SU	SU		RSU	RSU	SU	STU	SU	SU	SU	RSU	SU
Rodenback	3793	Caution	+0%			BCS	BCS	BCS	BC	BCRSU	BCSU	BCSU	BC	BCRSU	BCRSU	BCSU	BCSTU	BCSU	BCSU	BCSU	BCRSU	BCSU
Rotary	3497	Unsuitable	+25%			HZ	HZ	HZ	HZ	HZ	HZ	HZ	HZ	HZ	HZ	HZ	HZ	HZ	HZ	HZ	HZ	HZ
Sail	3909	Caution	20%			S	S	S		RSU	SU	SU		RSU	RSU	SU	STU	SU	SU	SU	RSU	SU
Samba	2654	Approved	+0%			Y	Y	Y	Y	Y	Y	Y	Y	Y	Y	Y	Y	Y	Y	Y	Y	Y
Scale	3950	Caution	+20%			FS	FS	FS	F	FRSU	FSU	FSU	F	FRSU	FRSU	FSU	FSTU	FSU	FSU	FSU	FRSU	FSU
Schism	3952	Caution	+0%			S	S	S		RSU	SU	SU		RSU	RSU	SU	STU	SU	SU	SU	RSU	SU
Score	3866	Unsuitable	+25%			HZ	HZ	HZ	HZ	HZ	HZ	HZ	HZ	HZ	HZ	HZ	HZ	HZ	HZ	HZ	HZ	HZ
Sense	3947	Unsuitable	Quote			HZ	HZ	HZ	HZ	HZ	HZ	HZ	HZ	HZ	HZ	HZ	HZ	HZ	HZ	HZ	HZ	HZ
Shortcut	3810	Unsuitable	+25%			AZ	AZ	AZ	AZ	AZ	AZ	AZ	AZ	AZ	AZ	AZ	AZ	AZ	AZ	AZ	AZ	AZ
Silicone Element	3919	Approved	+0%			Y	Y	Y	Y	Y	Y	Y	Y	Y	Y	Y	Y	Y	Y	Y	Y	Y
Silicone Element Celliant	3979	Caution	+0%			S	S	S		RSU	SU	SU		RSU	RSU	SU	STU	SU	SU	SU	RSU	SU
Silicone Nappa	3156	Caution	+0%			S	S	S		RSU	SU	SU		RSU	RSU	SU	STU	SU	SU	SU	RSU	SU
Singing In The Rain	6418	Unsuitable	+0%			AZ	AZ	AZ	AZ	AZ	AZ	AZ	AZ	AZ	AZ	AZ	AZ	AZ	AZ	AZ	AZ	AZ
Sketch	3849	Caution	+20%			S	S	S		RSU	SU	SU		RSU	RSU	SU	STU	SU	SU	SU	RSU	SU
Social Dance	3962	Caution	Quote			S	S	S		RSU	SU	SU		RSU	RSU	SU	STU	SU	SU	SU	RSU	SU
Sorano	3403	Caution	+0%			S	S	S		RSU	SU	SU		RSU	RSU	SU	STU	SU	SU	SU	RSU	SU
Span	3954	Unsuitable	+0%			ALZ	ALZ	ALZ	ALZ	ALZ	ALZ	ALZ	ALZ	ALZ	ALZ	ALZ	ALZ	ALZ	ALZ	ALZ	ALZ	ALZ
Spandau	3410	Approved	+0%			Y	Y	Y	Y	Y	Y	Y	Y	Y	Y	Y	Y	Y	Y	Y	Y	Y
Splice	3953	Unsuitable	+10%			AZ	AZ	AZ	AZ	AZ	AZ	AZ	AZ	AZ	AZ	AZ	AZ	AZ	AZ	AZ	AZ	AZ
Split	3949	Unsuitable	+10%			AZ	AZ	AZ	AZ	AZ	AZ	AZ	AZ	AZ	AZ	AZ	AZ	AZ	AZ	AZ	AZ	AZ
Standard	3040	Caution	+20%			S	S	S		RSU	SU	SU		RSU	RSU	SU	STU	SU	SU	SU	RSU	SU
Starburst	3748	Caution	+20%			S	S	S		RSU	SU	SU		RSU	RSU	SU	STU	SU	SU	SU	RSU	SU
Stratum	3868	Caution	+10%			S	S	S		RSU	SU	SU		RSU	RSU	SU	STU	SU	SU	SU	RSU	SU
Stride	3955	Caution	+0%			Y	Y	Y	Y	Y	Y	Y	Y	Y	Y	Y	Y	Y	Y	Y	Y	Y
Subtle	3951	Caution	+0%			S	S	S		RSU	SU	SU		RSU	RSU	SU	STU	SU	SU	SU	RSU	SU
Sunburst	3521	Unsuitable	+15%			AZ	AZ	AZ	AZ	AZ	AZ	AZ	AZ	AZ	AZ	AZ	AT	AZ	AZ	AZ	AZ	AZ
Swing	3712	Unsuitable	+25%			HZ	HZ	HZ	HZ	HZ	HZ	HZ	HZ	HZ	HZ	HZ	HZ	HZ	HZ	HZ	HZ	HZ
System	3856	Unsuitable	+20%			AZ	AZ	AZ	AZ	AZ	AZ	AZ	AZ	AZ	AZ	AZ	AZ	AZ	AZ	AZ	AZ	AZ
Tack Cloth	3749	Caution	+0%			KS	KS	KS	K	KRSU	KSU	KSU	K	KRSU	KRSU	KSU	KSTU	KSU	KSU	KSU	KRSU	KSU
Tailor	3163	Caution	+0%			S	S	S		RSU	SU	SU		RSU	RSU	SU	STU	SU	SU	SU	RSU	SU
Tap	3948	Unsuitable	+15%			HZ	HZ	HZ	HZ	HZ	HZ	HZ	HZ	HZ	HZ	HZ	HZ	HZ	HZ	HZ	HZ	HZ



**Grade**

Price grades correlate to those listed in the List Price Schedule for products with upholstery materials.  
  
Please contact Customer Service for patterns graded as **Quote**.

**Extra Material Required**

Yardage adjustments are required for those patterns less than 54 inches wide and/or having more than a nominal vertical repeat. This percentage amount must be added to the yardage requirement shown in the TUOHY List Prices and Specification Guide. Price grades shown here have already been adjusted as needed.

**Evaluation Codes**

- A Seam, needle, top issues
- B Frays, unravels
- C Knit backing required
- D Acrylic backing required
- E Stretchy, wrinkles, puddles
- F Surface, pattern distorts
- G Creases, abrades, durability
- H Humidity
- I No tufting - nap, pattern
- J Glues poorly
- K Very thick
- L Thin, porous
- M Steams poorly
- N Memory weak
- O Color striates
- P No center seam

- R OK Loose seat or back
- S OK Tight seat or back
- T OK Lumbar
- U OK Arm & body
- V OK Center seam
- W OK Tufting
- X OK Gluing
- Y Approved
- Z Unsuitable

**Tuohy Furniture Corporation**  
42 Saint Albans Place  
Chatfield, Minnesota 55923  
e: info@tuohyfurniture.com  
t: 507.867.4280  
[www.tuohyfurniture.com](http://www.tuohyfurniture.com)



**\*\*Grading Note:** Due to the current volatility of fabric pricing, we will no longer be listing grades on our website.  
Please see your customer service representative for current graded price.

# DESIGNTEX

When backing is required, the surcharge will be \$341 List for 5 – 22 yds; over 22 yds is \$15.50 List per yd.  
Add 1 week to lead time.

## Evaluation Codes by Product

February 1, 2020

Pattern Name	Pattern Number	Evaluation	Grade**	Material Req'd	Backing Req'd	902	Aim	Arcelle	Bau	Bryant Park	Domino	Edo	Fabric Panels	Genevieve	International	International II	Kaesi	Leit	Moderna	Rien	Selone	Vita	
Terra	3858	Caution	+0%	S		S	S	S		RSU	SU	SU		RSU	RSU	SU	STU	SU	SU	SU	RSU	SU	
Tilt	3001	Approved	15%	Y		Y	Y	Y	Y	Y	Y	Y	Y	Y	Y	Y	Y	Y	Y	Y	Y	Y	Y
Tiny Boucle	3962	Approved	+0%	Y		Y	Y	Y	Y	Y	Y	Y	Y	Y	Y	Y	Y	Y	Y	Y	Y	Y	Y
Tiny Herringbone	3741	Caution	+0%	S		S	S	S		RSU	SU	SU		RSU	RSU	SU	STU	SU	SU	SU	RSU	SU	
Tramway	3472	Unsuitable	+10%	HZ		HZ	HZ	HZ	HZ	HZ	HZ	HZ	HZ	HZ	HZ	HZ	HZ	HZ	HZ	HZ	HZ	HZ	HZ
Treeline	3864	Caution	+10%	FS		FS	FS	FS	F	FRSU	FSU	FSU	F	FRSU	FRSU	FSU	FSTU	FSU	FSU	FSU	FRSU	FSU	
Trim	3902	Caution	+10%	S		S	S	S		RSU	SU	SU		RSU	RSU	SU	STU	SU	SU	SU	RSU	SU	
Trove	3839	Approved	+0%	Y		Y	Y	Y	Y	Y	Y	Y	Y	Y	Y	Y	Y	Y	Y	Y	Y	Y	Y
Tweed Multi	3722	Approved	+0%	Y		Y	Y	Y	Y	Y	Y	Y	Y	Y	Y	Y	Y	Y	Y	Y	Y	Y	Y
Ulster	4149	Approved	+0%	Y		Y	Y	Y	Y	Y	Y	Y	Y	Y	Y	Y	Y	Y	Y	Y	Y	Y	Y
Ulster Upholstery	3957	Caution	+0%	S		S	S	S		RSU	SU	SU		RSU	RSU	SU	STU	SU	SU	SU	RSU	SU	
Velvet Corduroy	3012	Caution	+0%	S		S	S	S		RSU	SU	SU		RSU	RSU	SU	STU	SU	SU	SU	RSU	SU	
Vero	3857	Caution	+0%	S		S	S	S	X	RSU	SU	SU	X	RSU	RSU	SU	STU	SU	SU	SU	RSU	SU	
Viewpoint	3941	Unsuitable	+20%	AZ		AZ	AZ	AZ	AZ	AZ	AZ	AZ	AZ	AZ	AZ	AZ	AZ	AZ	AZ	AZ	AZ	AZ	AZ
Vine	3812	Caution	+20%						X				X										
W	3446	Caution	+0%	S		S	S	S		RSU	SU	SU		RSU	RSU	SU	STU	SU	SU	SU	RSU	SU	
Wend	3169	Caution	+0%	S		S	S	S		RSU	SU	SU		RSU	RSU	SU	STU	SU	SU	SU	RSU	SU	
Whim	3691	Approved	+0%	Y		Y	Y	Y	Y	Y	Y	Y	Y	Y	Y	Y	Y	Y	Y	Y	Y	Y	Y
Willis	3892	Unsuitable	+0%	ALZ		ALZ	ALZ	ALZ	ALZ	ALZ	ALZ	ALZ	ALZ	ALZ	ALZ	ALZ	ALZ	ALZ	ALZ	ALZ	ALZ	ALZ	ALZ
Windowpane Crypton	3861	Caution	+0%	S		S	S	S		RSU	SU	SU		RSU	RSU	SU	STU	SU	SU	SU	RSU	SU	
Woolish	3973	Caution	+0%	S		S	S	S		RSU	SU	SU		RSU	RSU	SU	STU	SU	SU	SU	RSU	SU	
Woven Texture	3853	Caution	+10%	S		S	S	S		RSU	SU	SU		RSU	RSU	SU	STU	SU	SU	SU	RSU	SU	



### Grade

Price grades correlate to those listed in the List Price Schedule for products with upholstery materials.

Please contact Customer Service for patterns graded as **Quote**.

### Extra Material Required

Yardage adjustments are required for those patterns less than 54 inches wide and/or having more than a nominal vertical repeat. This percentage amount must be added to the yardage requirement shown in the TUOHY List Prices and Specification Guide. Price grades shown here have already been adjusted as needed.

### Evaluation Codes

- A Seam, needle, top issues
- B Frays, unravels
- C Knit backing required
- D Acrylic backing required
- E Stretchy, wrinkles, puddles
- F Surface, pattern distorts
- G Creases, abrades, durability
- H Humidity
- I No tufting - nap, pattern
- J Glues poorly
- K Very thick
- L Thin, porous
- M Steams poorly
- N Memory weak
- O Color striates
- P No center seam

- R OK Loose seat or back
- S OK Tight seat or back
- T OK Lumbar
- U OK Arm & body
- V OK Center seam
- W OK Tufting
- X OK Gluing
- Y Approved
- Z Unsuitable

### Tuohy Furniture Corporation

42 Saint Albans Place  
Chatfield, Minnesota 55923  
e: info@tuohyfurniture.com  
t: 507.867.4280  
www.tuohyfurniture.com

TUOHY UPHOLSTERY PARTNERSHIPS

**DesignTex**

KnollTextiles

Maharam

**Tuohy Furniture Corporation**

42 Saint Albans Place, Chatfield, MN 55923

t 507.867.4280

info@tuohyfurniture.com

www.tuohyfurniture.com

TUOHY

UPHOLSTERY PARTNERSHIPS

**Knoll**Textiles

June 1, 2021

TUOHY



**Evaluation Codes by Product**

Pattern Name	Pattern Number	Evaluation	Grade**	Material Req'd	Backings Req'd	902	Aim	Arcelle	Bau	Bryant Park	Domino	Edo	Fabric Panels	Genevieve	International	International II	Kaesi	Leit	Moderna	Rien	Selone	Vita	
Abacus	K715	Caution	+25%			AB	AB	AB	AB	AB	AB	AB	AB	AB	AB	AB	ABT	AB	AB	AB	AB	AB	AB
Aegean	K20741	Caution	+0%		•	ABCS	ABCS	ABCS	ABC	ABCRSU	ABCSU	ABCSU	ABC	ABCRSU	ABCRSU	ABCSU	ABCSTU	ABCSU	ABCSU	ABCSU	ABCSU	ABCRSU	ABCSU
All Star Luxe	K2209	Caution	+0%			S	S	S		RSU	SU	SU		RSU	RSU	SU	STU	SU	SU	SU	RSU	SU	SU
Alter Ego	K2140	Unsuitable	+0%			ABLZ	ABLZ	ABLZ	ABLZ	ABLZ	ABLZ	ABLZ	ABLZ	ABLZ	ABLZ	ABLZ	ABLZ	ABLZ	ABLZ	ABLZ	ABLZ	ABLZ	ABLZ
Amore Luxe	K2080	Caution	+0%			S	S	S		RSU	SU	SU		RSU	RSU	SU	STU	SU	SU	SU	RSU	SU	SU
Andissa	K2083	Unsuitable	Quote			ABZ	ABZ	ABZ	ABZ	ABZ	ABZ	ABZ	ABZ	ABZ	ABZ	ABZ	ABZ	ABZ	ABZ	ABZ	ABZ	ABZ	ABZ
Arezzo Luxe	K1442	Caution	+0%			S	S	S		RSU	SU	SU		RSU	RSU	SU	STU	SU	SU	SU	RSU	SU	SU
Arrondissement	K2200	Caution	+25%			AS	AS	AS	AX	ARSU	ASU	ASU	AX	ARSU	ARSU	ASU	ASTU	ASU	ASU	ASU	ASU	ARSU	ASU
Aswan	K2046	Caution	0%			S	S	S		RSU	SU	SU		RSU	RSU	SU	STU	SU	SU	SU	RSU	SU	SU
Atelier	K1607	Caution	+0%			S	S	S	X	RSU	SU	SU	X	RSU	RSU	SU	STU	SU	SU	SU	RSU	SU	SU
Atlas	K1236	Caution	+0%			ENS	ENS	ENS	ENX	ENRSU	ENSU	ENSU	ENX	ENRSU	ENRSU	ENSU	ENSTU	ENSU	ENSU	ENSU	ENRSU	ENSU	ENSU
Attire	K2340	Caution	+0%			S	S	S		RSU	SU	SU		RSU	RSU	SU	STU	SU	SU	SU	RSU	SU	SU
Axiom	K1650	Caution	+0%			EFNS	EFNS	EFNS	EFN	EFNRSU	EFNSU	EFNSU	EFN	EFNRSU	EFNRSU	EFNSU	EFNSTU	EFNSU	EFNSU	EFNSU	EFNRSU	EFNSU	EFNSU
Bavaria Luxe	K1160	Caution	10%		•	ACS	ACS	ACS	AC	ACRSU	ACSU	ACSU	AC	ACRSU	ACRSU	ACSU	ACSTU	ACSU	ACSU	ACSU	ACRSU	ACSU	ACSU
Belize	K1165	Caution	+0%		•	AS	AS	AS	A	ARSU	ASU	ASU	A	ARSU	ARSU	ASU	ASTU	ASU	ASU	ASU	ARSU	ASU	ASU
Bella Luxe	K2336	Caution	+0%			S	S	S		RSU	SU	SU		RSU	RSU	SU	STU	SU	SU	SU	RSU	SU	SU
Biscayne	K1771	Caution	+10%			AEN	AEN	AEN	AENX	AEN	AEN	AEN	AENX	AEN	AEN	AEN	AENT	AEN	AEN	AEN	AEN	AEN	AEN
Bistro	K1775	Caution	+20%		•	ACS	ACS	ACS	AC	ACRSU	ACSU	ACSU	AC	ACRSU	ACRSU	ACSU	ACSTU	ACSU	ACSU	ACSU	ACRSU	ACSU	ACSU
Block Party	WC2335	Caution	+15%			S	S	S		RSU	SU	SU		RSU	RSU	SU	STU	SU	SU	SU	RSU	SU	SU
Bocce	K1255	Unsuitable	+10%			ABZ	ABZ	ABZ	ABZ	ABZ	ABZ	ABZ	ABZ	ABZ	ABZ	ABZ	ABZ	ABZ	ABZ	ABZ	ABZ	ABZ	ABZ
Boundary	K1828	Unsuitable	+0%			ABZ	ABZ	ABZ	ABZ	ABZ	ABZ	ABZ	ABZ	ABZ	ABZ	ABZ	ABZ	ABZ	ABZ	ABZ	ABZ	ABZ	ABZ
Brigadoon	K2167	Caution	+0%			S	S	S		RSU	SU	SU		RSU	RSU	SU	STU	SU	SU	SU	RSU	SU	SU
Buzz	2373	Unsuitable	+0%			HZ	HZ	HZ	HZ	HZ	HZ	HZ	HZ	HZ	HZ	HZ	HZ	HZ	HZ	HZ	HZ	HZ	HZ
Cairo	K2034	Caution	+25%			AS	AS	AS	A	ARSU	ASU	ASU	A	ARSU	ARSU	ASU	ASTU	ASU	ASU	ASU	ARSU	ASU	ASU
Calais Cotton Velvet	K787	Caution	+0%			S	S	S		RSU	SU	SU		RSU	RSU	SU	STU	SU	SU	SU	RSU	SU	SU
Calypso	K2127	Caution	+0%			S	S	S	X	RSU	SU	SU	X	RSU	RSU	SU	STU	SU	SU	SU	RSU	SU	SU
Cameo	K1443	Unsuitable	+0%			AZ	AZ	AZ	AZ	AZ	AZ	AZ	AZ	AZ	AZ	AZ	AZ	AZ	AZ	AZ	AZ	AZ	AZ
Cato	H800	Caution	+0%		•	ACS	ACS	ACS	ACX	ACRSU	ACSU	ACSU	ACX	ACRSU	ACRSU	ACSU	ACSTU	ACSU	ACSU	ACSU	ACRSU	ACSU	ACSU
Catwalk	K2156	Unsuitable	+0%			AZ	AZ	AZ	AZ	AZ	AZ	AZ	AZ	AZ	AZ	AZ	AZ	AZ	AZ	AZ	AZ	AZ	AZ
Chain Link	K2191	Caution	+0%			A	A	A	A	A	A	A	A	A	A	A	AT	A	A	A	A	A	A
Chameleon	K2372	Approved	+0%			Y	Y	Y	Y	Y	Y	Y	Y	Y	Y	Y	Y	Y	Y	Y	Y	Y	Y
Chance	K1552	Caution	+0%			AS	AS	AS	A	ARSU	ASU	ASU	A	ARSU	ARSU	ASU	ASTU	ASU	ASU	ASU	ARSU	ASU	ASU
Charm	K1049	Unsuitable	+0%			AZ	AZ	AZ	AZ	AZ	AZ	AZ	AZ	AZ	AZ	AZ	AZ	AZ	AZ	AZ	AZ	AZ	AZ
Chic Luxe	K2351	Caution	+0%			S	S	S		RSU	SU	SU		RSU	RSU	SU	STU	SU	SU	SU	RSU	SU	SU
Chiseled	K2249	Unsuitable	Quote			FJZ	FJZ	FJZ	FJZ	FJZ	FJZ	FJZ	FJZ	FJZ	FJZ	FJZ	FJZ	FJZ	FJZ	FJZ	FJZ	FJZ	FJZ
Chronicle	K1525	Caution	+10%			A	A	A	A	A	A	A	A	A	A	A	AT	A	A	A	A	A	A
Circa	K1054	Caution	+0%			S	S	S	X	RSU	SU	SU	X	RSU	RSU	SU	STU	SU	SU	SU	RSU	SU	SU
Classic Boucle	K162	Caution	+0%			S	S	S	X	RSU	SU	SU	X	RSU	RSU	SU	STU	SU	SU	SU	RSU	SU	SU
Cleo	K2168	Caution	+15%			A	A	A	A	A	A	A	A	A	A	A	AT	A	A	A	A	A	A
Code	K2251	Caution	+0%			S	S	S		RSU	SU	SU		RSU	RSU	SU	STU	SU	SU	SU	RSU	SU	SU
Color Collage	K2349	Caution	+25%			KS	KS	KS	K	KRSU	KSU	KSU	K	KRSU	KRSU	KSU	KSTU	KSU	KSU	KSU	KRSU	KSU	KSU
Color Field	K2226	Approved	+0%			Y	Y	Y	Y	Y	Y	Y	Y	Y	Y	Y	Y	Y	Y	Y	Y	Y	Y
Commuter Cloth	K1778	Caution	+0%			ABJ	ABJ	ABJ	ABJ	ABJ	ABJ	ABJ	ABJ	ABJ	ABJ	ABJ	ABJT	ABJ	ABJ	ABJ	ABJ	ABJ	ABJ
Constance Luxe	K1527	Caution	+0%			Y	Y	Y	Y	Y	Y	Y	Y	Y	Y	Y	Y	Y	Y	Y	Y	Y	Y
Cozy Cord	K2407	Caution	+0%			S	S	S	X	RSU	SU	SU	X	RSU	RSU	SU	STU	SU	SU	SU	RSU	SU	SU



**Grade**

Price grades correlate to those listed in the List Price Schedule for products with upholstery materials.

Please contact Customer Service for patterns graded as **Quote**.

**Extra Material Required**

Yardage adjustments are required for those patterns less than 54 inches wide and/or having more than a nominal vertical repeat. This percentage amount must be added to the yardage requirement shown in the TUOHY List Prices and Specification Guide. Price grades shown here have already been adjusted as needed.

**Evaluation Codes**

- A Seam, needle, top issues
- B Frays, unravels
- C Knit backing required
- D Acrylic backing required
- E Stretchy, wrinkles, puddles
- F Surface, pattern distorts
- G Creases, abrades, durability
- H Humidity
- I No tufting - nap, pattern
- J Glues poorly
- K Very thick
- L Thin, porous
- M Steams poorly
- N Memory weak
- O Color striates
- P No center seam

- R OK Loose seat or back
- S OK Tight seat or back
- T OK Lumbar
- U OK Arm & body
- V OK Center seam
- W OK Tufting
- X OK Gluing
- Y Approved
- Z Unsuitable

**Tuohy Furniture Corporation**

42 Saint Albans Place  
 Chatfield, Minnesota 55923  
 e: info@tuohyfurniture.com  
 t: 507.867.4280  
 www.tuohyfurniture.com

### Evaluation Codes by Product

Pattern Name	Pattern Number	Evaluation	Grade**	Material Req'd	Backing Req'd	902	Aim	Arcelle	Bau	Bryant Park	Domino	Edo	Fabric Panels	Genevieve	International	International II	Kaesi	Leit	Moderna	Rien	Selone	Vita	
Cris Cross	W305	Unsuitable	+20%			AZ	AZ	AZ	AZ	AZ	AZ	AZ	AZ	AZ	AZ	AZ	AZ	AZ	AZ	AZ	AZ	AZ	AZ
Cross Tech	K2279	Caution	+0%			LS	LS	LS	L	LRSU	LSU	LSU	L	LRSU	LRSU	LSU	LSTU	LSU	LSU	LSU	LSU	LRSU	LSU
Crossroad	K2085	Caution	+0%			LS	LS	LS	LX	LRSU	LSU	LSU	LX	LRSU	LRSU	LSU	LSTU	LSU	LSU	LSU	LRSU	LRSU	LSU
Cummings Luxe	K1378	Unsuitable	+25%			AZ	AZ	AZ	AZ	AZ	AZ	AZ	AZ	AZ	AZ	AZ	AZ	AZ	AZ	AZ	AZ	AZ	AZ
Dapper	K2338	Caution	+0%			BCS	BCS	BCS	BCX	BCRSU	BCSU	BCSU	BCX	BCRSU	BCRSU	BCSU	BCSTU	BCSU	BCSU	BCSU	BCRSU	BCRSU	BCSU
Day Tripper	K2248	Caution	+0%			S	S	S		RSU	SU	SU		RSU	RSU	SU	STU	SU	SU	SU	RSU	SU	SU
Delite	K2026	Caution	+0%			BZ	BZ	BZ	BZ	BZ	BZ	BZ	BZ	BZ	BZ	BZ	BT	BZ	BZ	BZ	BZ	BZ	BZ
Demure Luxe	K2023	Unsuitable	+0%			AJLZ	AJLZ	AJLZ	AJLZ	AJLZ	AJLZ	AJLZ	AJLZ	AJLZ	AJLZ	AJLZ	AJLZ	AJLZ	AJLZ	AJLZ	AJLZ	AJLZ	AJLZ
Diamond Days Luxe	K1756	Caution	+25%			BS	BS	BS	B	BRSU	BSU	BSU	B	BRSU	BRSU	BSU	BSTU	BSU	BSU	BSU	BRSU	BSU	BSU
Digi Velvet Luxe	K1969	Caution	20%			AKS	AKS	AKS	AK	AKRSU	AKSU	AKSU	AK	AKRSU	AKRSU	AKSU	AKSTU	AKSU	AKSU	AKSU	AKRSU	AKRSU	AKSU
Digital Ikat	WC2417	Unsuitable	Quote			KZ	KZ	KZ	KZ	KZ	KZ	KZ	KZ	KZ	KZ	KZ	KZ	KZ	KZ	KZ	KZ	KZ	KZ
Diva	K2051	Caution	+0%			S	S	S	X	RSU	SU	SU	X	RSU	RSU	SU	STU	SU	SU	SU	RSU	SU	SU
Djenne	K2029	Caution	+10%			S	S	S		RSU	SU	SU		RSU	RSU	SU	STU	SU	SU	SU	RSU	SU	SU
Dottie	K2259	Caution	+0%			AS	AS	AS	AX	ARSU	ASU	ASU	AX	ARSU	ARSU	ASU	ASTU	ASU	ASU	ASU	ARSU	ASU	ASU
Double Agent	K2199	Caution	Quote			S	S	S		RSU	SU	SU		RSU	RSU	SU	STU	SU	SU	SU	RSU	SU	SU
Doyenne Luxe	K2353	Unsuitable	+0%			AZ	AZ	AZ	AZ	AZ	AZ	AZ	AZ	AZ	AZ	AZ	AZ	AZ	AZ	AZ	AZ	AZ	AZ
Dune	K2047	Caution	+0%			AS	AS	AS	A	ARSU	ASU	ASU	A	ARSU	ARSU	ASU	ASTU	ASU	ASU	ASU	ARSU	ASU	ASU
Durand	K1885	Caution	+10%			A	A	A	AX	A	A	A	AX	A	A	A	AT	A	A	A	A	A	A
Dynamic	K1617	Unsuitable	+0%			AZ	AZ	AZ	AZ	AZ	AZ	AZ	AZ	AZ	AZ	AZ	AZ	AZ	AZ	AZ	AZ	AZ	AZ
Eclat Weave	K1104	Caution	+15%			AB	AB	AB	AB	AB	AB	AB	AB	AB	AB	AB	ABT	AB	AB	AB	AB	AB	AB
Entwine	K2355	Caution	+0%			S	S	S		RSU	SU	SU		RSU	RSU	SU	STU	SU	SU	SU	RSU	SU	SU
Essence	K205	Caution	10%			A	A	A	A	A	A	A	A	A	A	A	AT	A	A	A	A	A	A
Fancy Twill	K2348	Caution	+0%			AS	AS	AS	A	ARSU	ASU	ASU	A	ARSU	ARSU	ASU	ASTU	ASU	ASU	ASU	ARSU	ASU	ASU
Feeling Plaid	K2150	Unsuitable	+0%			ACZ	ACZ	ACZ	ACZ	ACZ	ACZ	ACZ	ACZ	ACZ	ACZ	ACZ	ACZ	ACZ	ACZ	ACZ	ACZ	ACZ	ACZ
Ferry	K1697	Caution	+0%			S	S	S	X	RSU	SU	SU	X	RSU	RSU	SU	STU	SU	SU	SU	RSU	SU	SU
Firefly	K2021	Caution	+10%			S	S	S		RSU	SU	SU		RSU	RSU	SU	STU	SU	SU	SU	RSU	SU	SU
Floressence	K2357	Caution	Quote			S	S	S		RSU	SU	SU		RSU	RSU	SU	STU	SU	SU	SU	RSU	SU	SU
Flower Power	K2418	Caution	Quote			S	S	S		RSU	SU	SU		RSU	RSU	SU	STU	SU	SU	SU	RSU	SU	SU
Gala II	K1520	Caution	+10%			AB	AB	AB	AB	AB	AB	AB	AB	AB	AB	AB	ABT	AB	AB	AB	AB	AB	AB
Gibson	K1086	Caution	+10%			S	S	S		RSU	SU	SU		RSU	RSU	SU	STU	SU	SU	SU	RSU	SU	SU
Glider	K1717	Caution	+20%			S	S	S		RSU	SU	SU		RSU	RSU	SU	STU	SU	SU	SU	RSU	SU	SU
Greenwich	K1753	Unsuitable	+20%			AHZ	AHZ	AHZ	AHZ	AHZ	AHZ	AHZ	AHZ	AHZ	AHZ	AHZ	AHZ	AHZ	AHZ	AHZ	AHZ	AHZ	AHZ
Groovy	K2242	Caution	+0%			S	S	S		RSU	SU	SU		RSU	RSU	SU	STU	SU	SU	SU	RSU	SU	SU
Hastings Luxe	K109	Caution	+0%			AS	AS	AS	AX	ARSU	ASU	ASU	AX	ARSU	ARSU	ASU	ASTU	ASU	ASU	ASU	ARSU	ASU	ASU
Haze	K109	Caution	+0%			S	S	S		RSU	SU	SU		RSU	RSU	SU	STU	SU	SU	SU	RSU	SU	SU
Helios	K2089	Caution	+0%			S	S	S		RSU	SU	SU		RSU	RSU	SU	STU	SU	SU	SU	RSU	SU	SU
Highland	K2010	Caution	+0%			S	S	S		RSU	SU	SU		RSU	RSU	SU	STU	SU	SU	SU	RSU	SU	SU
Holbrook	K1928	Caution	+15%			AJS	AJS	AJS	AJ	AJRSU	AJSU	AJSU	AJ	AJRSU	AJRSU	AJSU	AJSTU	AJSU	AJSU	AJSU	AJRSU	AJSU	AJSU
Hourglass	K1523	Caution	+0%			AL	AL	AL	ALX	AL	AL	AL	ALX	AL	AL	AL	ALT	AL	AL	AL	AL	AL	AL
Hudson	K1765	Caution	+15%			A	A	A	A	A	A	A	A	A	A	A	AT	A	A	A	A	A	A
Ikat Square	K1703	Caution	+20%			AB	AB	AB	AB	AB	AB	AB	AB	AB	AB	AB	ABT	AB	AB	AB	AB	AB	AB
Ikat Stripe	K1701	Unsuitable	+20%			AZ	AZ	AZ	AZ	AZ	AZ	AZ	AZ	AZ	AZ	AZ	AZ	AZ	AZ	AZ	AZ	AZ	AZ
Imprint	K2333	Caution	+25%			S	S	S		RSU	SU	SU		RSU	RSU	SU	STU	SU	SU	SU	RSU	SU	SU
In Step	K2375	Caution	+15%			S	S	S		RSU	SU	SU		RSU	RSU	SU	STU	SU	SU	SU	RSU	SU	SU
In Stitches	K2190	Caution	+0%			S	S	S	X	RSU	SU	SU	X	RSU	RSU	SU	STU	SU	SU	SU	RSU	SU	SU



### Grade

Price grades correlate to those listed in the List Price Schedule for products with upholstery materials.

Please contact Customer Service for patterns graded as **Quote**.

### Extra Material Required

Yardage adjustments are required for those patterns less than 54 inches wide and/or having more than a nominal vertical repeat. This percentage amount must be added to the yardage requirement shown in the TUOHY List Prices and Specification Guide. Price grades shown here have already been adjusted as needed.

### Evaluation Codes

- A Seam, needle, top issues
- B Frays, unravels
- C Knit backing required
- D Acrylic backing required
- E Stretchy, wrinkles, puddles
- F Surface, pattern distorts
- G Creases, abrades, durability
- H Humidity
- I No tufting - nap, pattern
- J Glues poorly
- K Very thick
- L Thin, porous
- M Steams poorly
- N Memory weak
- O Color striates
- P No center seam

- R OK Loose seat or back
- S OK Tight seat or back
- T OK Lumbar
- U OK Arm & body
- V OK Center seam
- W OK Tufting
- X OK Gluing
- Y Approved
- Z Unsuitable

### Tuohy Furniture Corporation

42 Saint Albans Place  
 Chatfield, Minnesota 55923  
 e: info@tuohyfurniture.com  
 t: 507.867.4280  
 www.tuohyfurniture.com

**Evaluation Codes by Product**

Pattern Name	Pattern Number	Evaluation	Grade**	Material Req'd	Backing Req'd	902	Aim	Arcelle	Bau	Bryant Park	Domino	Edo	Fabric Panels	Genevieve	International	International II	Kaesi	Leit	Moderna	Rien	Selone	Vita	
Infinite	K2263	Caution		+0%		S	S	S	X	RSU	SU	SU	X	RSU	RSU	SU	STU	SU	SU	SU	RSU	SU	
Instinct	K2258	Caution		+0%		S	S	S		RSU	SU	SU		RSU	RSU	SU	STU	SU	SU	SU	RSU	SU	
Island	K20532	Caution		+10%		S	S	S		RSU	SU	SU		RSU	RSU	SU	STU	SU	SU	SU	RSU	SU	
Ita Luxe	K1930	Unsuitable		+0%		BKZ	BKZ	BKZ	BKZ	BKZ	BKZ	BKZ	BKZ	BKZ	BKZ	BKZ	BKZ	BKZ	BKZ	BKZ	BKZ	BKZ	BKZ
It's Complicated	K2252	Caution		+25%		S	S	S		RSU	SU	SU		RSU	RSU	SU	STU	SU	SU	SU	RSU	SU	
Jasmine Luxe	K2077	Caution		+15%		A	A	A	A	A	A	A	A	A	A	A	AT	A	A	A	A	A	A
Journey	K1806	Caution		+0%		BCS	BCS	BCS	BCX	BCRSU	BCSU	BCSU	BCX	BCRSU	BCRSU	BCSU	BCSTU	BCSU	BCSU	BCSU	BCRSU	BCSU	BCSU
Juno	K2152	Unsuitable		+0%		AZ	AZ	AZ	AZ	AZ	AZ	AZ	AZ	AZ	AZ	AZ	AZ	AZ	AZ	AZ	AZ	AZ	AZ
Kabuki	K2084	Unsuitable		+15%		HZ	HZ	HZ	HZ	HZ	HZ	HZ	HZ	HZ	HZ	HZ	HZ	HZ	HZ	HZ	HZ	HZ	HZ
Kamani Luxe	K1580	Unsuitable		+25%		AZ	AZ	AZ	AZ	AZ	AZ	AZ	AZ	AZ	AZ	AZ	AZ	AZ	AZ	AZ	AZ	AZ	AZ
Kampala	K2032	Caution		+0%		AS	AS	AS	A	ARSU	ASU	ASU	A	ARSU	ARSU	ASU	ASTU	ASU	ASU	ASU	ARSU	ASU	ASU
Katazome	K1459	Caution		+10%		S	S	S		RSU	SU	SU		RSU	RSU	SU	STU	SU	SU	SU	RSU	SU	
Kaya	K2122	Caution		+0%		AS	AS	AS	A	ARSU	ASU	ASU	A	ARSU	ARSU	ASU	ASTU	ASU	ASU	ASU	ARSU	ASU	ASU
Keaton	K1598	Caution		+0%		S	S	S	X	RSU	SU	SU	X	RSU	RSU	SU	STU	SU	SU	SU	RSU	SU	
Kimono	K1174	Caution		+25%		A	A	A	A	A	A	A	A	A	A	A	AT	A	A	A	A	A	A
Knoll Felt	K1207	Caution		+0%		S	S	S	X	RSU	SU	SU	X	RSU	RSU	SU	STU	SU	SU	SU	RSU	SU	SU
Knoll Hopsack	K1206	Caution		+0%		S	S	S	X	RSU	SU	SU	X	RSU	RSU	SU	STU	SU	SU	SU	RSU	SU	SU
Knoll Velvet	K784	Caution		+0%		S	S	S		RSU	SU	SU		RSU	RSU	SU	STU	SU	SU	SU	RSU	SU	SU
Lagos	K2028	Unsuitable		+25%		HZ	HZ	HZ	HZ	HZ	HZ	HZ	HZ	HZ	HZ	HZ	HZ	HZ	HZ	HZ	HZ	HZ	HZ
Liberty	K1888	Unsuitable		+0%		AZ	AZ	AZ	AZ	AZ	AZ	AZ	AZ	AZ	AZ	AZ	AZ	AZ	AZ	AZ	AZ	AZ	AZ
Limani	K2079	Caution		+0%		S	S	S	X	RSU	SU	SU	X	RSU	RSU	SU	STU	SU	SU	SU	RSU	SU	SU
Little Devil	K2112	Caution		+0%		S	S	S	X	RSU	SU	SU	X	RSU	RSU	SU	STU	SU	SU	SU	RSU	SU	SU
Looped In	K2390	Caution		+0%		S	S	S	X	RSU	SU	SU	X	RSU	RSU	SU	STU	SU	SU	SU	RSU	SU	SU
Lore CR	HC1123	Caution		+0%		AS	AS	AS	AX	ARSU	ASU	ASU	AX	ARSU	ARSU	ASU	ASTU	ASU	ASU	ASU	ARSU	ASU	ASU
Ludlow	K1998	Caution		+0%		AJ	AJ	AJ	AJ	AJ	AJ	AJ	AJ	AJ	AJ	AJ	AJT	AJ	AJ	AJ	AJ	AJ	AJ
Magnolia	K1999	Caution		Quote		A	A	A	A	A	A	A	A	A	A	A	AT	A	A	A	A	A	A
Masquerade	K806	Caution		+10%		HS	HS	HS	H	HRSU	HSU	HSU	H	HRSU	HRSU	HSU	HSTU	HSU	HSU	HSU	HRSU	HSU	HSU
Melange	K1882	Caution		+0%		AS	AS	AS	AX	ARSU	ASU	ASU	AX	ARSU	ARSU	ASU	ASTU	ASU	ASU	ASU	ARSU	ASU	ASU
Melody	K2067	Caution		+25%		S	S	S		RSU	SU	SU		RSU	RSU	SU	STU	SU	SU	SU	RSU	SU	SU
Menagerie	K1322	Caution		+10%		FJS	FJS	FJS	FJ	FJRSU	FJSU	FJSU	FJ	FJRSU	FJRSU	FJSU	FJSTU	FJSU	FJSU	FJSU	FJRSU	FJSU	FJSU
Meroe	K2043	Unsuitable		+10%		HZ	HZ	HZ	HZ	HZ	HZ	HZ	HZ	HZ	HZ	HZ	HZ	HZ	HZ	HZ	HZ	HZ	HZ
Midpoint	K2123	Unsuitable		+25%		HZ	HZ	HZ	HZ	HZ	HZ	HZ	HZ	HZ	HZ	HZ	HZ	HZ	HZ	HZ	HZ	HZ	HZ
Milestone	K1886	Caution		+0%		AS	AS	AS	A	ARSU	ASU	ASU	A	ARSU	ARSU	ASU	ASTU	ASU	ASU	ASU	ARSU	ASU	ASU
Mini Stitch	K1130	Caution		+10%		B	B	B	B	B	B	B	B	B	B	B	BT	B	B	B	B	B	B
Mod Plaid	K1630	Caution		+10%		A	A	A	A	A	A	A	A	A	A	A	AT	A	A	A	A	A	A
Modern Tweed	K2155	Caution		+0%		S	S	S		RSU	SU	SU		RSU	RSU	SU	STU	SU	SU	SU	RSU	SU	SU
Monarch	K1149	Caution		+0%		ABC	ABC	ABC	ABCX	ABC	ABC	ABC	ABCX	ABC	ABC	ABC	ABCT	ABC	ABC	ABC	ABC	ABC	ABC
Nature Walk	K2081	Caution		+20%		AS	AS	AS	AX	ARSU	ASU	ASU	AX	ARSU	ARSU	ASU	ASTU	ASU	ASU	ASU	ARSU	ASU	ASU
North Island Luxe	K1159	Approved		+0%		Y	Y	Y	Y	Y	Y	Y	Y	Y	Y	Y	Y	Y	Y	Y	Y	Y	Y
Oh La La	K2201	Caution		+0%		S	S	S	X	RSU	SU	SU	X	RSU	RSU	SU	STU	SU	SU	SU	RSU	SU	SU
On Point	K2293	Unsuitable		+0%		HZ	HZ	HZ	HZ	HZ	HZ	HZ	HZ	HZ	HZ	HZ	HZ	HZ	HZ	HZ	HZ	HZ	HZ
Origins	K1700	Approved		+20%		Y	Y	Y	Y	Y	Y	Y	Y	Y	Y	Y	Y	Y	Y	Y	Y	Y	Y
Overture	K2169	Approved		+0%		Y	Y	Y	Y	Y	Y	Y	Y	Y	Y	Y	Y	Y	Y	Y	Y	Y	Y
Palisade	K2030	Caution		+0%		S	S	S		RSU	SU	SU		RSU	RSU	SU	STU	SU	SU	SU	RSU	SU	SU
Paradigm	K1101	Caution		+15%		S	S	S		RSU	SU	SU		RSU	RSU	SU	STU	SU	SU	SU	RSU	SU	SU



**Grade**

Price grades correlate to those listed in the List Price Schedule for products with upholstery materials.

Please contact Customer Service for patterns graded as **Quote**.

**Extra Material Required**

Yardage adjustments are required for those patterns less than 54 inches wide and/or having more than a nominal vertical repeat. This percentage amount must be added to the yardage requirement shown in the TUOHY List Prices and Specification Guide. Price grades shown here have already been adjusted as needed.

**Evaluation Codes**

- A Seam, needle, top issues
- B Frays, unravels
- C Knit backing required
- D Acrylic backing required
- E Stretchy, wrinkles, puddles
- F Surface, pattern distorts
- G Creases, abrades, durability
- H Humidity
- I No tufting - nap, pattern
- J Glues poorly
- K Very thick
- L Thin, porous
- M Steams poorly
- N Memory weak
- O Color striates
- P No center seam

- R OK Loose seat or back
- S OK Tight seat or back
- T OK Lumbar
- U OK Arm & body
- V OK Center seam
- W OK Tufting
- X OK Gluing
- Y Approved
- Z Unsuitable

**Tuohy Furniture Corporation**

42 Saint Albans Place  
 Chatfield, Minnesota 55923  
 e: info@tuohyfurniture.com  
 t: 507.867.4280  
 www.tuohyfurniture.com

**Evaluation Codes by Product**

Pattern Name	Pattern Number	Evaluation	Grade**	Material Req'd	Backing Req'd	902	Aim	Arcelle	Bau	Bryant Park	Domino	Edo	Fabric Panels	Genevieve	International	International II	Kaesi	Leit	Moderna	Rien	Selone	Vita	
Patchwork	K2292	Unsuitable	+0%			HZ	HZ	HZ	HZ	HZ	HZ	HZ	HZ	HZ	HZ	HZ	HZ	HZ	HZ	HZ	HZ	HZ	HZ
Petal Pusher	K1968	Approved	15%			Y	Y	Y	Y	Y	Y	Y	Y	Y	Y	Y	Y	Y	Y	Y	Y	Y	Y
Petite Floral Luxe	K2087	Unsuitable	+10%			AZ	AZ	AZ	AZ	AZ	AZ	AZ	AZ	AZ	AZ	AZ	AZ	AZ	AZ	AZ	AZ	AZ	AZ
Piper Luxe	K1706	Caution	+10%			AS	AS	AS	A	AR SU	ASU	ASU	A	AR SU	AR SU	ASU	ASTU	ASU	ASU	ASU	AR SU	ASU	ASU
Pivot	W1926	Unsuitable	+0%			EGNZ	EGNZ	EGNZ	EGNZ	EGNZ	EGNZ	EGNZ	EGNZ	EGNZ	EGNZ	EGNZ	EGNZ	EGNZ	EGNZ	EGNZ	EGNZ	EGNZ	EGNZ
Plaid On	K2420	Caution	+0%			S	S	S		RSU	SU	SU		RSU	RSU	SU	STU	SU	SU	RSU	SU	RSU	SU
Plaidtastic	K2238	Caution	Quote			NS	NS	NS	N	NRSU	NSU	NSU	N	NRSU	NRSU	NSU	NSTU	NSU	NSU	NSU	NRSU	NSU	NSU
Prairie	K1925	Caution	+0%			ENS	ENS	ENS	ENX	ENRSU	ENSU	ENSU	ENX	ENRSU	ENRSU	ENSU	ENSTU	ENSU	ENSU	ENSU	ENRSU	ENSU	ENSU
Premier Silicone	K2294	Approved	+0%			Y	Y	Y	Y	Y	Y	Y	Y	Y	Y	Y	Y	Y	Y	Y	Y	Y	Y
Prep	K1076	Caution	+0%			AS	AS	AS	A	AR SU	ASU	ASU	A	AR SU	AR SU	ASU	ASTU	ASU	ASU	ASU	AR SU	ASU	ASU
Prim	K1884	Caution	+10%			S	S	S		RSU	SU	SU		RSU	RSU	SU	STU	SU	SU	SU	RSU	SU	SU
Prince Hairy Luxe	K2237	Caution	+10%			S	S	S	X	RSU	SU	SU	X	RSU	RSU	SU	STU	SU	SU	SU	RSU	SU	SU
Pullman	K21245	Caution	+0%			S	S	S	X	RSU	SU	SU	X	RSU	RSU	SU	STU	SU	SU	SU	RSU	SU	SU
Quark	K781	Caution	+10%			AS	AS	AS	A	AR SU	ASU	ASU	A	AR SU	AR SU	ASU	ASTU	ASU	ASU	ASU	AR SU	ASU	ASU
Rebel	K2261	Caution	+0%			BS	BS	BS	BX	BRSU	BSU	BSU	BX	BRSU	BRSU	BSU	BSTU	BSU	BSU	BSU	BRSU	BSU	BSU
Retreat	K236	Unsuitable	+25%			HZ	HZ	HZ	HZ	HZ	HZ	HZ	HZ	HZ	HZ	HZ	HZ	HZ	HZ	HZ	HZ	HZ	HZ
Rivington	K1080	Caution	+0%			S	S	S	X	RSU	SU	SU	X	RSU	RSU	SU	STU	SU	SU	SU	RSU	SU	SU
Roam	K1657	Caution	+0%			S	S	S	X	RSU	SU	SU	X	RSU	RSU	SU	STU	SU	SU	SU	RSU	SU	SU
Rush Hour	K1824	Caution	+0%			B	B	B	B	B	B	B	B	B	B	B	BT	B	B	B	B	B	B
Rutledge Luxe	K1707	Caution	+25%			S	S	S		RSU	SU	SU		RSU	RSU	SU	STU	SU	SU	SU	RSU	SU	SU
Sahara	HC1269	Unsuitable	+0%			ABZ	ABZ	ABZ	ABZ	ABZ	ABZ	ABZ	ABZ	ABZ	ABZ	ABZ	ABZ	ABZ	ABZ	ABZ	ABZ	ABZ	ABZ
Sashiko	K2121	Caution	+25%			S	S	S	X	RSU	SU	SU	X	RSU	RSU	SU	STU	SU	SU	SU	RSU	SU	SU
Seurat	K2151	Caution	+0%			B	B	B	BX	B	B	B	BX	B	B	B	BT	B	B	B	B	B	B
Sherman	K1789	Caution	+20%			B	B	B	B	B	B	B	B	B	B	B	BT	B	B	B	B	B	B
Shima	K1468	Caution	+25%			BG	BG	BG	BG	BG	BG	BG	BG	BG	BG	BG	BGT	BG	BG	BG	BG	BG	BG
Sideline	K2210	Unsuitable	+25%			HZ	HZ	HZ	HZ	HZ	HZ	HZ	HZ	HZ	HZ	HZ	HZ	HZ	HZ	HZ	HZ	HZ	HZ
Sinclair	K1555	Caution	+10%			B	B	B	B	B	B	B	B	B	B	B	BT	B	B	B	B	B	B
Smart	K1268	Caution	+0%			ENS	ENS	ENS	ENX	ENSU	ENSU	ENSU	ENX	ENSU	ENSU	ENSU	ENSTU	ENSU	ENSU	ENSU	ENSU	ENSU	ENSU
Soliloquy	K1458	Unsuitable	+0%			BLZ	BLZ	BLZ	BLZ	BLZ	BLZ	BLZ	BLZ	BLZ	BLZ	BLZ	BLZ	BLZ	BLZ	BLZ	BLZ	BLZ	BLZ
Sonnet	K1460	Caution	+0%			ACS	ACS	ACS	AC	ACRSU	ACSU	ACSU	AC	ACRSU	ACRSU	ACSU	ACSTU	ACSU	ACSU	ACSU	ACRSU	ACSU	ACSU
Spencer	K1106	Caution	+0%			S	S	S		RSU	SU	SU		RSU	RSU	SU	STU	SU	SU	SU	RSU	SU	SU
Spot On	K1324	Caution	+15%			AB	AB	AB	AB	AB	AB	AB	AB	AB	AB	AB	ABT	AB	AB	AB	AB	AB	AB
Spree	K1600	Unsuitable	+10%			ADZ	ADZ	ADZ	ADZ	ADZ	ADZ	ADZ	ADZ	ADZ	ADZ	ADZ	ADZ	ADZ	ADZ	ADZ	ADZ	ADZ	ADZ
Stepping Stones	K346	Caution	+10%			A	A	A	A	A	A	A	A	A	A	A	AT	A	A	A	A	A	A
Stretch Appeal	K2188	Caution	+15%			BCS	BCS	BCS	BCX	BCRSU	BCSU	BCSU	BCX	BCRSU	BCRSU	BCSU	BCSTU	BCSU	BCSU	BCSU	BCRSU	BCSU	BCSU
Striae Stripe	K1827	Caution	+15%			B	B	B	BX	B	B	B	BX	B	B	B	BT	B	B	B	B	B	B
Stripe It	K2368	Caution	+25%			S	S	S		RSU	SU	SU		RSU	RSU	SU	STU	SU	SU	SU	RSU	SU	SU
Stripmania	K2225	Unsuitable	+10%			AZ	AZ	AZ	AZ	AZ	AZ	AZ	AZ	AZ	AZ	AZ	AZ	AZ	AZ	AZ	AZ	AZ	AZ
Summit	K2020	Caution	+0%			S	S	S	X	RSU	SU	SU	X	RSU	RSU	SU	STU	SU	SU	SU	RSU	SU	SU
Sutton	K1750	Unsuitable	+0%			DZ	DZ	DZ	DZ	DZ	DZ	DZ	DZ	DZ	DZ	DZ	DZ	DZ	DZ	DZ	DZ	DZ	DZ
Swank Luxe	K2221	Unsuitable	+0%			ALZ	ALZ	ALZ	ALZ	ALZ	ALZ	ALZ	ALZ	ALZ	ALZ	ALZ	ALZ	ALZ	ALZ	ALZ	ALZ	ALZ	ALZ
Swing	K479	Approved	+0%			Y	Y	Y	Y	Y	Y	Y	Y	Y	Y	Y	Y	Y	Y	Y	Y	Y	Y
Synth	K1693	Caution	+0%			BS	BS	BS	BX	BRSU	BSU	BSU	BX	BRSU	BRSU	BSU	BSTU	BSU	BSU	BSU	BRSU	BSU	BSU
Tabloid	K2022	Caution	+25%			S	S	S		RSU	SU	SU		RSU	RSU	SU	STU	SU	SU	SU	RSU	SU	SU
Tempest	K2377	Caution	+0%			S	S	S		RSU	SU	SU		RSU	RSU	SU	STU	SU	SU	SU	RSU	SU	SU



**Grade**

Price grades correlate to those listed in the List Price Schedule for products with upholstery materials.

Please contact Customer Service for patterns graded as **Quote**.

**Extra Material Required**

Yardage adjustments are required for those patterns less than 54 inches wide and/or having more than a nominal vertical repeat. This percentage amount must be added to the yardage requirement shown in the TUOHY List Prices and Specification Guide. Price grades shown here have already been adjusted as needed.

**Evaluation Codes**

- A Seam, needle, top issues
- B Frays, unravels
- C Knit backing required
- D Acrylic backing required
- E Stretchy, wrinkles, puddles
- F Surface, pattern distorts
- G Creases, abrades, durability
- H Humidity
- I No tufting - nap, pattern
- J Glues poorly
- K Very thick
- L Thin, porous
- M Steams poorly
- N Memory weak
- O Color striates
- P No center seam

- R OK Loose seat or back
- S OK Tight seat or back
- T OK Lumbar
- U OK Arm & body
- V OK Center seam
- W OK Tufting
- X OK Gluing
- Y Approved
- Z Unsuitable

**Tuohy Furniture Corporation**

42 Saint Albans Place  
 Chatfield, Minnesota 55923  
 e: info@tuohyfurniture.com  
 t: 507.867.4280  
 www.tuohyfurniture.com

**\*\*Grading Note:** Due to the current volatility of fabric pricing, we will no longer be listing grades on our website. Please see your customer service representative for current graded price.



When backing is required, the surcharge will be \$341 List for 5 – 22 yds; over 22 yds is \$15.50 List per yd. Add 1 week to lead time.

**Evaluation Codes by Product**

February 1, 2020

Pattern Name	Pattern Number	Evaluation	Grade**	Material Req'd	Backing Req'd	902	Aim	Arcelle	Bau	Bryant Park	Domino	Edo	Fabric Panels	Genevieve	International	International II	Kaesi	Leit	Moderna	Ren	Selone	Vita
Tight Rope	K1798	Caution	+10%			S	S	S		RSU	SU	SU		RSU	RSU	SU	STU	SU	SU	SU	RSU	SU
Tinge	K2068	Caution	+0%			S	S	S		RSU	SU	SU		RSU	RSU	SU	STU	SU	SU	SU	RSU	SU
Tivoli Luxe	K2063	Caution	+0%			GS	GS	GS	GX	GRSU	GSU	GSU	GX	GRSU	GRSU	GSU	GSTU	GSU	GSU	GSU	GRSU	GSU
Topos	K2397	Approved	+0%			Y	Y	Y	Y	Y	Y	Y	Y	Y	Y	Y	Y	Y	Y	Y	Y	Y
Totem	K1561	Caution	+0%			FS	FS	FS	FX	FRSU	FSU	FSU	FX	FRSU	FRSU	FSU	FSTU	FSU	FSU	FSU	FRSU	FSU
Trophy	K1709	Caution	+0%			S	S	S		RSU	SU	SU		RSU	RSU	SU	STU	SU	SU	SU	RSU	SU
Tryst	K1522	Unsuitable	+0%			AZ	AZ	AZ	AZ	AZ	AZ	AZ	AZ	AZ	AZ	AZ	AZ	AZ	AZ	AZ	AZ	AZ
Twist Tie	K2264	Caution	Quote			JS	JS	JS	J	JRSU	JSU	JSU	J	JRSU	JRSU	JSU	JSTU	JSU	JSU	JSU	JRSU	JSU
Ultrasuede	K1021	Approved	+0%			Y	Y	Y	Y	Y	Y	Y	Y	Y	Y	Y	Y	Y	Y	Y	Y	Y
Uni-Form	K2125	Caution	+0%		•	BCS	BCS	BCS	BCX	BCRSU	BCSU	BCSU	BCX	BCRSU	BCRSU	BCSU	BCSTU	BCSU	BCSU	BCSU	BCRSU	BCSU
Utmost II	K2358	Caution	+0%			S	S	S		RSU	SU	SU		RSU	RSU	SU	STU	SU	SU	SU	RSU	SU
Utopia	K2371	Caution	+0%			S	S	S		RSU	SU	SU		RSU	RSU	SU	STU	SU	SU	SU	RSU	SU
Utrillo	K1807	Unsuitable	+0%			ANZ	ANZ	ANZ	ANZ	ANZ	ANZ	ANZ	ANZ	ANZ	ANZ	ANZ	ANZ	ANZ	ANZ	ANZ	ANZ	ANZ
Vatera	K2071	Caution	+25%			A	A	A	A	AR	A	A	A	AR	AR	A	AT	A	A	A	AR	A
Venue	K1558	Approved	+0%			Y	Y	Y	Y	Y	Y	Y	Y	Y	Y	Y	Y	Y	Y	Y	Y	Y
Versa	K1698	Caution	+20%		•	ADS	ADS	ADS	AD	ADRSU	ADSU	ADSU	AD	ADRSU	ADRSU	ADSTU	ADSU	ADSU	ADSU	ADRSU	ADSU	
Vertical Velvet	D2415	Unsuitable	+0%			AZ	AZ	AZ	AZ	AZ	AZ	AZ	AZ	AZ	AZ	AZ	AZ	AZ	AZ	AZ	AZ	AZ
Vice Versa	K2361	Unsuitable	+0%			HZ	HZ	HZ	HZ	HZ	HZ	HZ	HZ	HZ	HZ	HZ	HZ	HZ	HZ	HZ	HZ	HZ
Viewpoint - Kt Wall	WC2416	Unsuitable	+0%			ABZ	ABZ	ABZ	ABZ	ABZ	ABZ	ABZ	ABZ	ABZ	ABZ	ABZ	ABZ	ABZ	ABZ	ABZ	ABZ	ABZ
Vinyl	K242	Caution	+0%			S	S	S		RSU	SU	SU		RSU	RSU	SU	STU	SU	SU	SU	RSU	SU
Westwood	K1949	Caution	+0%			Y	Y	Y	Y	Y	Y	Y	Y	Y	Y	Y	Y	Y	Y	Y	Y	Y
Whip	K1386	Approved	+0%			Y	Y	Y	Y	Y	Y	Y	Y	Y	Y	Y	Y	Y	Y	Y	Y	Y
Wild Thing	K2240	Unsuitable	10%			AZ	AZ	AZ	AZ	AZ	AZ	AZ	AZ	AZ	AZ	AZ	AZ	AZ	AZ	AZ	AZ	AZ
Wit	K2050	Unsuitable	+15%			HZ	HZ	HZ	HZ	HZ	HZ	HZ	HZ	HZ	HZ	HZ	HZ	HZ	HZ	HZ	HZ	HZ
Woodland I	K2049	Unsuitable	+0%			AHZ	AHZ	AHZ	AHZ	AHZ	AHZ	AHZ	AHZ	AHZ	AHZ	AHZ	AHZ	AHZ	AHZ	AHZ	AHZ	AHZ
Woodland II	K2401	Caution	+0%			S	S	S	X	RSU	SU	SU	X	RSU	RSU	SU	STU	SU	SU	SU	RSU	SU
World Piece Luxe	K2208	Unsuitable	Quote			Z	Z	Z	Z	Z	Z	Z	Z	Z	Z	Z	Z	Z	Z	Z	Z	Z
Wow Factor	K2362	Approved	+0%			Y	Y	Y	Y	Y	Y	Y	Y	Y	Y	Y	Y	Y	Y	Y	Y	Y
Wrap Up	K2410	Caution	+0%		•	CS	CS	CS	C	CRSU	CSU	CSU	C	CRSU	CRSU	CSU	CSTU	CSU	CSU	CSU	CRSU	CSU
Yeni	K 2082	Unsuitable	+0%			EHNZ	EHNZ	EHNZ	EHNZ	EHNZ	EHNZ	EHNZ	EHNZ	EHNZ	EHNZ	EHNZ	EHNZ	EHNZ	EHNZ	EHNZ	EHNZ	EHNZ
Zari Cr	HC1008	Caution	+20%			S	S	S		RSU	SU	SU		RSU	RSU	SU	STU	SU	SU	SU	RSU	SU
Zen Wave	K2078	Unsuitable	+20%			HZ	HZ	HZ	HZ	HZ	HZ	HZ	HZ	HZ	HZ	HZ	HZ	HZ	HZ	HZ	HZ	HZ



**Grade**  
Price grades correlate to those listed in the List Price Schedule for products with upholstery materials.  
  
Please contact Customer Service for patterns graded as **Quote**.

**Extra Material Required**  
Yardage adjustments are required for those patterns less than 54 inches wide and/or having more than a nominal vertical repeat. This percentage amount must be added to the yardage requirement shown in the TUOHY List Prices and Specification Guide. Price grades shown here have already been adjusted as needed.

**Evaluation Codes**  
A Seam, needle, top issues  
B Frays, unravels  
C Knit backing required  
D Acrylic backing required  
E Stretchy, wrinkles, puddles  
F Surface, pattern distorts  
G Creases, abrades, durability  
H Humidity  
I No tufting - nap, pattern  
J Glues poorly  
K Very thick  
L Thin, porous  
M Steams poorly  
N Memory weak  
O Color striates  
P No center seam

R OK Loose seat or back  
S OK Tight seat or back  
T OK Lumbar  
U OK Arm & body  
V OK Center seam  
W OK Tufting  
X OK Gluing  
Y Approved  
Z Unsuitable

**Tuohy Furniture Corporation**  
42 Saint Albans Place  
Chatfield, Minnesota 55923  
e: info@tuohyfurniture.com  
t: 507.867.4280  
www.tuohyfurniture.com



TUOHY UPHOLSTERY PARTNERSHIPS

Designtex

**KnollTextiles**

Maharam

**Tuohy Furniture Corporation**

42 Saint Albans Place, Chatfield, MN 55923

t 507.867.4280

info@tuohyfurniture.com

www.tuohyfurniture.com

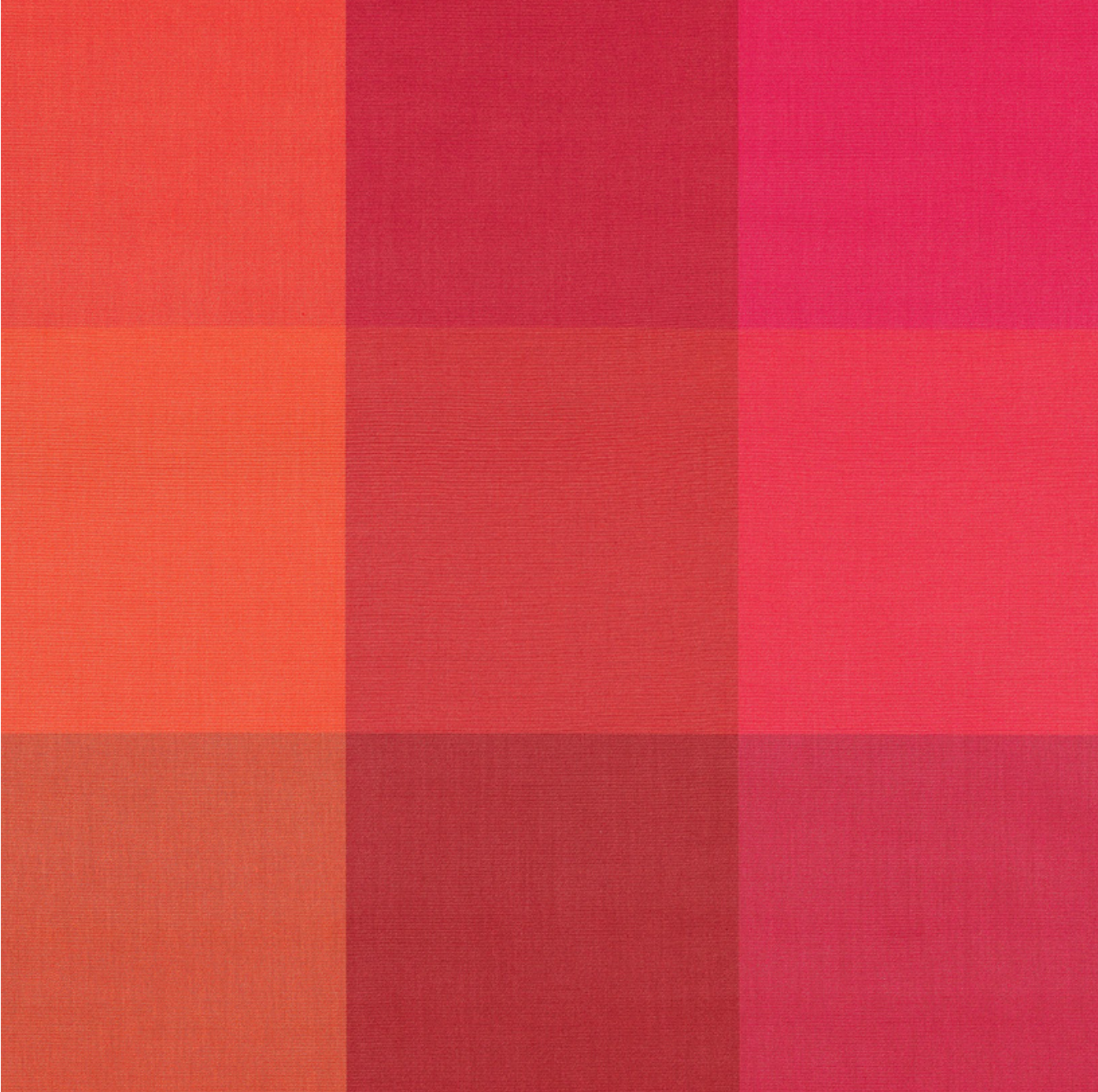
TUOHY

UPHOLSTERY PARTNERSHIPS

**maharam**

June 1, 2021

TUOHY



Evaluation Codes by Product

Table with 22 columns: Pattern Name, Pattern Number, Evaluation, Grade\*\*, Material Req'd, Backing Req'd, 902, Aim, Arcelle, Bau, Bryant Park, Domino, Edo, Fabric Panels, Genevieve, International, International II, Kaesi, Leit, Moderna, Ren, Salone, Vita. Rows include various patterns like A Band Apart, Abacus, Agency, etc.



Grade Price grades correlate to those listed in the List Price Schedule for products with upholstery materials. Please contact Customer Service for patterns graded as Quote.

Extra Material Required Yardage adjustments are required for those patterns less than 54 inches wide and/or having more than a nominal vertical repeat. This percentage amount must be added to the yardage requirement shown in the TUOHY List Prices and Specification Guide. Price grades shown here have already been adjusted as needed.

- Evaluation Codes A Seam, needle, top issues B Frays, unravels C Knit backing required D Acrylic backing required E Stretchy, wrinkles, puddles F Surface, pattern distorts G Creases, abrades, durability H Humidity I No tufting - nap, pattern J Glues poorly K Very thick L Thin, porous M Steams poorly N Memory weak O Color striates P No center seam

- R OK Loose seat or back S OK Tight seat or back T OK Lumbar U OK Arm & body V OK Center seam W OK Tufting X OK Gluing Y Approved Z Unsuitable

Tuohy Furniture Corporation 42 Saint Albans Place Chatfield, Minnesota 55923 e: info@tuohyfurniture.com t: 507.867.4280 www.tuohyfurniture.com















TUOHY UPHOLSTERY PARTNERSHIPS

Designtex  
KnollTextiles  
**Maharam**

**Tuohy Furniture Corporation**  
42 Saint Albans Place, Chatfield, MN 55923  
t 507.867.4280  
info@tuohyfurniture.com  
[www.tuohyfurniture.com](http://www.tuohyfurniture.com)

TUOHY

\*\*Grading Note: Due to the current volatility of fabric pricing, we will no longer be listing grades on our website. Please see your customer service representative for current graded price.

# Leather & Faux-Leather

February 1, 2020

### Evaluation Codes by Product

Pattern Name	Pattern Number	Evaluation	Grade**	Material Req'd	Backing Req'd	902	Aim	Arcelle	Bau	Bryant Park	Domino	Edo	Fabric Panels	Genevieve	International	International II	Kaesi	Leit	Moderna	Ren	Selone	Vita	
TUOHY Lena	(Leather)	Approved		+0%		Y	Y	Y	Y	Y	Y	Y	Y	Y	Y	Y	Y	Y	Y	Y	Y	Y	Y
TUOHY Silix	(FauxLthr)	Approved		+0%		Y	Y	Y	Y	Y	Y	Y	Y	Y	Y	Y	Y	Y	Y	Y	Y	Y	Y



**Grade**  
Price grades correlate to those listed in the List Price Schedule for products with upholstery materials.  
  
Please contact Customer Service for patterns graded as **Quote**.

**Extra Material Required**  
Yardage adjustments are required for those patterns less than 54 inches wide and/or having more than a nominal vertical repeat. This percentage amount must be added to the yardage requirement shown in the TUOHY List Prices and Specification Guide. Price grades shown here have already been adjusted as needed.

**Evaluation Codes**

A	Seam, needle, top issues	I	No tufting - nap, pattern	R	OK Loose seat or back
B	Frays, unravels	J	Glues poorly	S	OK Tight seat or back
C	Knit backing required	K	Very thick	T	OK Lumbar
D	Acrylic backing required	L	Thin, porous	U	OK Arm & body
E	Stretchy, wrinkles, puddles	M	Stems poorly	V	OK Center seam
F	Surface, pattern distorts	N	Memory weak	W	OK Tufting
G	Creases, abrades, durability	O	Color striates	X	OK Gluing
H	Humidity	P	No center seam	Y	Approved
				Z	Unsuitable

**Tuohy Furniture Corporation**  
42 Saint Albans Place  
Chatfield, Minnesota 55923  
e: info@tuohyfurniture.com  
t: 507.867.4280  
www.tuohyfurniture.com

TUOHY UPHOLSTERY PARTNERSHIPS

**Designtex**  
**KnollTextiles**  
**Maharam**

See Listings

TUOHY LEATHERS & FAUX-LEATHER

LEATHERS	GRADE
<b>Lena</b>	<b>L1</b>
FAUX-LEATHER	GRADE
<b>Silex</b>	<b>F3</b>

**Tuohy Furniture Corporation**  
42 Saint Albans Place, Chatfield, MN 55923  
t 507.867.4280  
info@tuohyfurniture.com

[www.tuohyfurniture.com](http://www.tuohyfurniture.com)