

**Upholstery Partnerships**

FABRICS      LEATHER  
Designtex    Lena  
KnollTextiles FAUX-LEATHER  
Maharam      Silex

June 1, 2021

TUOHY





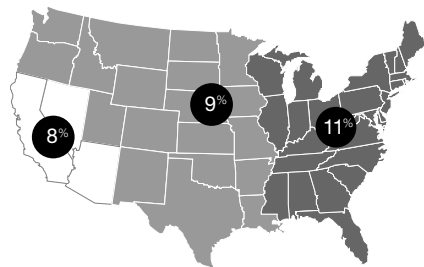
## Upholstery Policies

### Seating Freight/Handling Fees:

Freight/handling fees are charged on a regional basis, as shown in the map below.

These fees are pre-calculated and prepaid by TUOHY and added to the invoice at the time of shipment. Should additional charges be incurred by TUOHY due to delivery issues (non-dock, re-delivery, etc.) after initial billing, the customer may be liable for those additional charges.

The title of goods changes when merchandise leaves TUOHY's dock. Any subsequent freight damage and all freight claims are the responsibility of the purchaser or consignee to report to the carrier promptly upon receipt and the settle with the carrier.



**COM/COL:** TUOHY accepts COM fabrics and COL leathers for consideration on its products. To verify suitability of your selection, inquire with Customer Service for information from our Fabric Analysis Program. Upholsteries not listed in this program must be submitted for approval prior to acceptance of an order; submit a 12 x 12 sample prior to entering your order. Your purchase order must include an upholstery specification that has been approved by TUOHY.

**COM/COL:** TUOHY accepts COM fabrics and COL leathers for consideration on its products. To verify suitability of your selection, inquire with Customer Service for information from our Fabric Analysis Program. Upholsteries not listed in this program must be submitted for approval prior to acceptance of an order; submit a 12 x 12 sample prior to entering your order. Your purchase order must include an upholstery specification that has been approved by TUOHY.

All COM/COL requirements are based on whole pieces of material; split shipments are not allowed. We are not responsible for COM/COL upholstery wear, defects, or its appropriateness.

COL leather requirements are listed in square feet and based on hides that are 40 square feet or larger. For hides below 40 square feet add 15% to the footage requirements; for calf hides below 30 square feet add 30% to the footage requirements.

Our pricing includes labor for applying upholstery and is based on applying only one type of color way per item of furniture, with no specific relationship between the pattern or weave of the upholstery material and the configuration of the item of furniture.

A surcharge not to exceed 15% of the COM price will be added when vinyl is used and/or multiple upholsteries or colorways are applied to the same product. These circumstances may create the need for additional yardage; contact Customer Service for details prior to ordering.

If additional labor is required because of unique characteristics of the fabric, a special quote will be required.

Fabric/vinyl yardage requirements and leather square footage requirements are shown throughout this price list. Fabric and vinyl requirements are based on upholstering one unit, using a single, continuous 54-in wide material, off-the-roll, with minimal (under 2-in) repeat in any direction. Inquire about lower per-unit yardage requirements on orders of more than one unit.

Verify whether individual product listings in this price schedule call for greater allowances for this additional yardage.

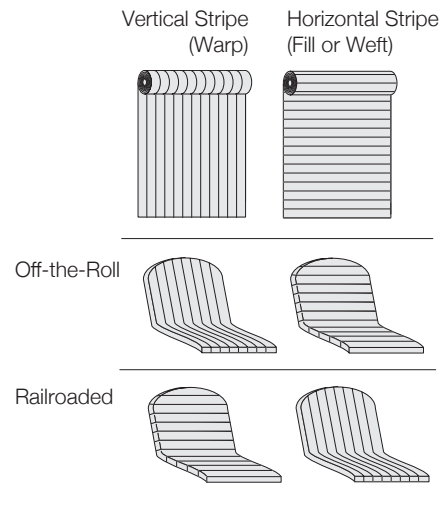
Patterned fabrics and vinyls may be railroaded on request but are subject to a surcharge and/or additional yardage requirements.

Seams will be required when the product application width is greater than the usable roll width, whether off-the-roll or railroaded.

Additional yardage may be required if roll width is less than 54 inches or a pattern requires matching due to repeat. The chart at right will be helpful as a general guide. Please confirm with our Customer Service Department on specifics regarding selections for your project. Changes in yardage requirement will affect upholstery grading in TUOHY Upholstery Partnership Programs.

Note that repeat is the sum of horizontal and vertical repeats; headings are listed in inches:

**Table 1: Pattern Direction**



Fire Rating: All upholstered pieces pass Cal-117. For Cal-133 or Boston Fire, contact Customer Service at (507) 867-4280.

### Yardage and Grade Adjustments for Roll Width and/or Pattern Repeat

WIDTH	HORIZONTAL + VERTICAL REPEAT							
	<2	2-10	11-20	21-25	26-30	31-35	36-40	41-45
54	0%	10%	15%	20%	25%	30%	35%	40%
51-53	15%	20%	25%	30%	35%	40%	45%	50%
48-50	30%	35%	40%	45%	50%	55%	60%	65%
45-47	45%	50%	55%	60%	65%	70%	75%	80%
36-44	60%	65%	70%	75%	80%	85%	90%	95%

Quoted delivery dates run from the date on which we receive your material. Excess fabric will not be returned or stored unless specifically requested in writing with your order; freight to be collect.

Ship-to address for COM/COL materials and memo samples varies by product line. Please consult individual product listings and look for these graphical keys for identifying the correct address.



**All seating except 902, Bau Benches, Pleat, Draped, and Melvin**

**COM/COL Materials:**  
TUOHY Furniture Corporation Upholstery Receiving Dept  
13715 S Western Ave  
Gardena, CA 90247-2515

**Memo Samples:**  
TUOHY Furniture Corporation Memo Receiving Dept  
1224 W 132nd St  
Gardena, CA 90247-1506



**902 Seating & Bau Benches All casegood fabric panels & bench pads All conference table top inserts**

**COM/COL Materials & Memo Samples:**  
TUOHY Furniture Corporation P1 Upholstery Receiving  
42 Saint Albans Place  
Chatfield, MN 55923-1457



**Pleat, Draped, and Melvin**

**COM/COL Materials & Memo Samples:**  
TUOHY/Realform Technologies  
5-1870 Albion Road  
Toronto ON, Canada M9W 5T2

Please provide tagging information as needed for your project.

## Upholstery Partnerships User Guide

Locate the desired Pattern Name and Pattern Number and note the corresponding Evaluation Status, Grade, Additional Material Required and Backing Required.

When backing is required, the surcharge will be \$341 List for 5 – 22 yds; over 22 yds is \$15.50 List per yd. Add 1 week to lead time.

### Backing Req'd

### Evaluation [Status]

Approved = Upholstery is OK to use.  
 Unsuitable = Upholstery should not be used.  
 Caution = See **Evaluation Codes by Product**.

## DESIGNTEX

When backing is required, the surcharge will be \$341 List for 5 – 22 yds; over 22 yds is \$15.50 List per yd. Add 1 week to lead time.

### Evaluation Codes by Product

Pattern Name	Pattern Number	Evaluation	Grade	Material Req'd	Backing Req'd	902	Alm	Arcelle	Bau	Bryant Park	Domino	Erb	Fabric Panels	Genevieve	International	International II	Kgesi	Leit	Moderna	Ren	Salone	Vita
Acacia	2843	Caution	F9	+20%		IS	IS	IS	I	IRSU	ISU	ISU	I	IRSU	IRSU	ISU	ISTU	ISU	ISU	ISU	IRSU	ISU
Adler	3661	Unsuitable				HZ	HZ	HZ	HZ	HZ	HZ	HZ	HZ	HZ	HZ	HZ	HZ	HZ	HZ	HZ	HZ	HZ
Air	3865	Approved	Quote	Quote		Y	Y	Y	Y	Y	Y	Y	Y	Y	Y	Y	Y	Y	Y	Y	Y	Y
Alcazar	3413	Caution	F4	+0%		GS	GS	GS	GX	GRSU	GSU	GSU	GX	GRSU	GRSU	GSU	GSTU	GSU	GSU	GSU	GRSU	GSU
Alchemy	3353	Approved	F3	+0%		Y	Y	Y	Y	Y	Y	Y	Y	Y	Y	Y	Y	Y	Y	Y	Y	Y
Aloft	3846	Approved	F4	+0%		Y	Y	Y	Y	Y	Y	Y	Y	Y	Y	Y	Y	Y	Y	Y	Y	Y
Alpine	3542	Unsuitable				Z	Z	Z	Z	Z	Z	Z	Z	Z	Z	Z	Z	Z	Z	Z	Z	Z
Amwell	3561	Caution	Quote	Quote		IS	IS	IS	I	IRSU	ISU	ISU	I	IRSU	IRSU	ISU	ISTU	ISU	ISU	ISU	IRSU	ISU
Angle	3922	Unsuitable				ABIPZ	ABIPZ	ABIPZ	ABIPZ	ABIPZ	ABIPZ	ABIPZ	ABIPZ	ABIPZ	ABIPZ	ABIPZ	ABIPZ	ABIPZ	ABIPZ	ABIPZ	ABIPZ	ABIPZ
Annex	3272	Unstested		+0%																		
Anni	3843	Caution	F10	+0%		IS	IS	IS	I	IRSU	ISU	ISU	I	IRSU	IRSU	ISU	ISTU	ISU	ISU	ISU	IRSU	ISU
Appleseed	2682	Caution	F7	+0%		BCS	BCS	BCS	BC	BCRSU	BCSU	BCSU	BC	BCRSU	BCRSU	BCSU	BCSTU	BCSU	BCSU	BCSU	BCRSU	BCSU
Arne	4141	Caution	F3	+0%		BCPS	BCPS	BCPS	BCP	BCPRSU	BCPSU	BCPSU	BCP	BCPRSU	BCPRSU	BCPSU	BOPSTU	BCPSU	BCPSU	BCPSU	BCPRSU	BCPSU
Arthur	3652	Caution	F13	+0%		BCKS	BCKS	BCKS	BCK	BCKRSU	BCKSU	BCKSU	BCK	BCKRSU	BCKRSU	BCKSU	BCKSTU	BCKSU	BCKSU	BCKSU	BCKRSU	BCKSU
Aspect	3887	Approved	F1	+0%		Y	Y	Y	Y	Y	Y	Y	Y	Y	Y	Y	Y	Y	Y	Y	Y	Y
Aster	3527	Caution	F12	+20%		IS	IS	IS	I	IRSU	ISU	ISU	I	IRSU	IRSU	ISU	ISTU	ISU	ISU	ISU	IRSU	ISU
Bark Cloth	3746	Approved	F5	+0%		Y	Y	Y	Y	Y	Y	Y	Y	Y	Y	Y	Y	Y	Y	Y	Y	Y
Bead	3883	Unsuitable				HZ	HZ	HZ	HZ	HZ	HZ	HZ	HZ	HZ	HZ	HZ	HZ	HZ	HZ	HZ	HZ	HZ
Beguiled By The Wild	3495	Approved	F9	+20%		Y	Y	Y	Y	Y	Y	Y	Y	Y	Y	Y	Y	Y	Y	Y	Y	Y
Big Dot	3525	Approved	F7	+0%		Y	Y	Y	Y	Y	Y	Y	Y	Y	Y	Y	Y	Y	Y	Y	Y	Y
Big Texture	3815	Caution	F6	+0%		FS	FS	FS	FX	FRSU	FSU	FSU	FX	FRSU	FRSU	FSU	FSTU	FSU	FSU	FSU	FRSU	FSU
Billiard Cloth	3549	Approved	F5	+0%		Y	Y	Y	Y	Y	Y	Y	Y	Y	Y	Y	Y	Y	Y	Y	Y	Y
Birch Bark Plaid	3533	Unsuitable				HZ	HZ	HZ	HZ	HZ	HZ	HZ	HZ	HZ	HZ	HZ	HZ	HZ	HZ	HZ	HZ	HZ
Birdseye	4142	Unsuitable				ABIZ	ABIZ	ABIZ	ABIZ	ABIZ	ABIZ	ABIZ	ABIZ	ABIZ	ABIZ	ABIZ	ABIZ	ABIZ	ABIZ	ABIZ	ABIZ	ABIZ
Bitdrift	3958	Approved	F9	+0%		Y	Y	Y	Y	Y	Y	Y	Y	Y	Y	Y	Y	Y	Y	Y	Y	Y
Bixby Macro	3924	Unsuitable				HZ	HZ	HZ	HZ	HZ	HZ	HZ	HZ	HZ	HZ	HZ	HZ	HZ	HZ	HZ	HZ	HZ
Bixby Micro	3894	Unsuitable				HZ	HZ	HZ	HZ	HZ	HZ	HZ	HZ	HZ	HZ	HZ	HZ	HZ	HZ	HZ	HZ	HZ
Botanique	3485	Unsuitable				APZ	APZ	APZ	APZ	APZ	APZ	APZ	APZ	APZ	APZ	APZ	APZ	APZ	APZ	APZ	APZ	APZ
Boucle	3659	Caution	F8	+0%		S	S	S	RSU	SU	SU	SU	S	RSU	RSU	SU	STU	SU	SU	SU	RSU	SU
Boucle Dot	3944	Unsuitable				ABHZ	ABHZ	ABHZ	ABHZ	ABHZ	ABHZ	ABHZ	ABHZ	ABHZ	ABHZ	ABHZ	ABHZ	ABHZ	ABHZ	ABHZ	ABHZ	ABHZ
Breana	2675	Approved	F3	+0%		Y	Y	Y	Y	Y	Y	Y	Y	Y	Y	Y	Y	Y	Y	Y	Y	Y
Brushed Flannel	3797	Approved	F1	+0%		Y	Y	Y	Y	Y	Y	Y	Y	Y	Y	Y	Y	Y	Y	Y	Y	Y
Building Blocks	3821	Unsuitable				HZ	HZ	HZ	HZ	HZ	HZ	HZ	HZ	HZ	HZ	HZ	HZ	HZ	HZ	HZ	HZ	HZ
Burlap Weave	3826	Caution	F5	+0%		CIS	CIS	CIS	CI	CIRSU	CISU	CISU	CI	CIRSU	CIRSU	CISU	CISTU	CISU	CISU	CISU	CIRSU	CISU
Burrard	3890	Caution	F12	+10%		IKS	IKS	IKS	IK	IKRSU	IKSU	IKSU	IK	IKRSU	IKRSU	IKSU	IKSTU	IKSU	IKSU	IKSU	IKRSU	IKSU
Burrard Ground Cloth	3891	Unsuitable				HZ	HZ	HZ	HZ	HZ	HZ	HZ	HZ	HZ	HZ	HZ	HZ	HZ	HZ	HZ	HZ	HZ
Bute Braemar	3802	Caution	F13	+0%		BCS	BCS	BCS	BCX	BCRSU	BCSU	BCSU	BCX	BCRSU	BCRSU	BCSU	BCSTU	BCSU	BCSU	BCSU	BCRSU	BCSU
Bute Lewis	3803	Unsuitable				APZ	APZ	APZ	APZ	APZ	APZ	APZ	APZ	APZ	APZ	APZ	APZ	APZ	APZ	APZ	APZ	APZ
Bute Melrose	3805	Caution	F13	+0%		CIS	CIS	CIS	CI	CIRSU	CISU	CISU	CI	CIRSU	CIRSU	CISU	CISTU	CISU	CISU	CISU	CIRSU	CISU
Bute Storr	3805	Caution	Quote	+0%		CIKS	CIKS	CIKS	CIK	CIKRSU	CIKSU	CIKSU	CIK	CIKRSU	CIKRSU	CIKSU	CIKSTU	CIKSU	CIKSU	CIKSU	CIKRSU	CIKSU
Bute Tiree	3805	Caution	F16	+0%		CIS	CIS	CIS	CI	CIRSU	CISU	CISU	CI	CIRSU	CIRSU	CISU	CISTU	CISU	CISU	CISU	CIRSU	CISU
Bute Tweed	3805	Caution	F12	+0%		CS	CS	CS	C	CRSU	CSU	CSU	C	CRSU	CRSU	CSU	CSTU	CSU	CSU	CSU	CRSU	CSU
Capsule	3881	Unsuitable				HZ	HZ	HZ	HZ	HZ	HZ	HZ	HZ	HZ	HZ	HZ	HZ	HZ	HZ	HZ	HZ	HZ
Carom	3847	Unsuitable				HZ	HZ	HZ	HZ	HZ	HZ	HZ	HZ	HZ	HZ	HZ	HZ	HZ	HZ	HZ	HZ	HZ
Carrick	3787	Unsuitable				BZ	BZ	BZ	BZ	BZ	BZ	BZ	BZ	BZ	BZ	BZ	BZ	BZ	BZ	BZ	BZ	BZ

February 1, 2020

## TUOHY

### Grade

Price grades correlate to those listed in the List Price Schedule for products with upholstery materials.

Please contact Customer Service for patterns graded as Quote.

### Extra Material Required

Yardage adjustments are required for those patterns less than 54 inches wide and/or having more than a nominal vertical repeat. This percentage amount must be added to the yardage requirement shown in the TUOHY List Prices and Specification Guide. Price grades shown here have already been adjusted as needed.

### Extra Material Required

Yardage adjustments are required for those patterns less than 54 inches wide and/or having more than a nominal vertical repeat. This percentage amount must be added to the yardage requirement shown in the TUOHY List Prices and Specification Guide. Price grades shown here have already been adjusted as needed.

### Evaluation Codes

- |                                |                             |                         |
|--------------------------------|-----------------------------|-------------------------|
| A Seam, needle, top issues     | I No tufting - nap, pattern | R OK Loose seat or back |
| B Frays, unravels              | J Glues poorly              | S OK Tight seat or back |
| C Knit backing required        | K Very thick                | T OK Lumbar             |
| D Acrylic backing required     | L Thin, porous              | U OK Arm & body         |
| E Stretchy, wrinkles, puddles  | M Steams poorly             | V OK Center seam        |
| F Surface, pattern distorts    | N Memory weak               | W OK Tufting            |
| G Creases, abrades, durability | O Color striates            | X OK Gluing             |
| H Humidity                     | P No center seam            | Y Approved              |
|                                |                             | Z Unsuitable            |

### Tuohy Furniture Corporation

42 Saint Albans Place  
 Chatfield, Minnesota 55923  
 e: info@tuohyfurniture.com  
 t: 507.867.4280  
 www.tuohyfurniture.com

Evaluation Codes are explained at the bottom of each page. Consult with your Customer Service Representative for more detailed information about cautionary use of these upholsteries.



UPHOLSTERY PARTNERSHIPS

# DESIGNTEX

June 1, 2021

TUOHY





\*\*Grading Note: Due to the current volatility of fabric pricing, we will no longer be listing grades on our website. Please see your customer service representative for current graded price.

# DESIGNTEX

When backing is required, the surcharge will be \$341 List for 5 – 22 yds; over 22 yds is \$15.50 List per yd. Add 1 week to lead time.

## Evaluation Codes by Product

February 1, 2020

Pattern Name	Pattern Number	Evaluation	Grade**	Material Req'd	Backings Req'd	902	Aim	Arcelle	Bau	Bryant Park	Domino	Edo	Fabric Panels	Genevieve	International	International II	Kaesi	Leit	Moderna	Rien	Selone	Vita
Adler	3661	Unsuitable	+0%			HZ	HZ	HZ	HZ	HZ	HZ	HZ	HZ	HZ	HZ	HZ	HZ	HZ	HZ	HZ	HZ	HZ
Alcazar	3413	Approved	+0%			Y	Y	Y	Y	Y	Y	Y	Y	Y	Y	Y	Y	Y	Y	Y	Y	Y
Alochemy	3353	Caution	+0%			S	S	S		RSU	SU	SU		RSU	RSU	SU	STU	SU	SU	SU	RSU	SU
Alphabet	3877	Caution	+0%			Y	Y	Y	Y	Y	Y	Y	Y	Y	Y	Y	Y	Y	Y	Y	Y	Y
Amwell	3561	Caution	Quote			S	S	S		RSU	SU	SU		RSU	RSU	SU	STU	SU	SU	SU	RSU	SU
Angle	3922	Unsuitable	Quote			ABZ	ABZ	ABZ	ABZ	ABZ	ABZ	ABZ	ABZ	ABZ	ABZ	ABZ	ABZ	ABZ	ABZ	ABZ	ABZ	ABZ
Annex	3272	Caution	0%																			
Appleseed	2682	Caution	+0%	•		BCS	BCS	BCS	BC	BCRSU	BCSU	BCSU	BC	BCRSU	BCRSU	BCSU	BCSTU	BCSU	BCSU	BCSU	BCRSU	BCSU
Arne	4141	Caution	+0%	•		BCS	BCS	BCS	BC	BCRSU	BCSU	BCSU	BC	BCRSU	BCRSU	BCSU	BCSTU	BCSU	BCSU	BCSU	BCRSU	BCSU
Aspect	3887	Caution	+0%			S	S	S		RSU	SU	SU		RSU	RSU	SU	STU	SU	SU	SU	RSU	SU
Aster	3527	Caution	+20%			S	S	S	X	RSU	SU	SU	X	RSU	RSU	SU	STU	SU	SU	SU	RSU	SU
Atria	3897	Unsuitable	+20%			HZ	HZ	HZ	HZ	HZ	HZ	HZ	HZ	HZ	HZ	HZ	HZ	HZ	HZ	HZ	HZ	HZ
Bark Cloth	3746	Caution	+0%			S	S	S		RSU	SU	SU		RSU	RSU	SU	STU	SU	SU	SU	RSU	SU
Beguiled By The Wild	3043	Caution	+20%			S	S	S	X	RSU	SU	SU	X	RSU	RSU	SU	STU	SU	SU	SU	RSU	SU
Big Dot	3525	Caution	+0%			S	S	S		RSU	SU	SU		RSU	RSU	SU	STU	SU	SU	SU	RSU	SU
Big Texture	3815	Caution	+0%			FS	FS	FS	FX	FRSU	FSU	FSU	FX	FRSU	FRSU	FSU	FSTU	FSU	FSU	FSU	FRSU	FSU
Billiard Cloth	3549	Approved	+0%			Y	Y	Y	Y	Y	Y	Y	Y	Y	Y	Y	Y	Y	Y	Y	Y	Y
Birdseye	4142	Unsuitable	+0%			ABZ	ABZ	ABZ	ABZ	ABZ	ABZ	ABZ	ABZ	ABZ	ABZ	ABZ	ABZ	ABZ	ABZ	ABZ	ABZ	ABZ
Bitdrift	3958	Caution	0%			S	S	S		RSU	SU	SU		RSU	RSU	SU	STU	SU	SU	SU	RSU	SU
Bixby Macro	3924	Unsuitable	+25%			HZ	HZ	HZ	HZ	HZ	HZ	HZ	HZ	HZ	HZ	HZ	HZ	HZ	HZ	HZ	HZ	HZ
Bixby Micro	3894	Unsuitable	+0%			HZ	HZ	HZ	HZ	HZ	HZ	HZ	HZ	HZ	HZ	HZ	HZ	HZ	HZ	HZ	HZ	HZ
Bloomer	3027	Unsuitable	Quote			ABEHZ	ABEHZ	ABEHZ	ABEHZ	ABEHZ	ABEHZ	ABEHZ	ABEHZ	ABEHZ	ABEHZ	ABEHZ	ABEHZ	ABEHZ	ABEHZ	ABEHZ	ABEHZ	ABEHZ
Boucle	3659	Caution	+0%			S	S	S		RSU	SU	SU		RSU	RSU	SU	STU	SU	SU	SU	RSU	SU
Boucle Dot	3944	Unsuitable	+0%			ABHZ	ABHZ	ABHZ	ABHZ	ABHZ	ABHZ	ABHZ	ABHZ	ABHZ	ABHZ	ABHZ	ABHZ	ABHZ	ABHZ	ABHZ	ABHZ	ABHZ
Boucle Melange	3171	Caution	+0%			S	S	S		RSU	SU	SU		RSU	RSU	SU	STU	SU	SU	SU	RSU	SU
Brushed Flannel	3797	Caution	+0%			S	S	S		RSU	SU	SU		RSU	RSU	SU	STU	SU	SU	SU	RSU	SU
Building Blocks	3821	Unsuitable	+25%			HZ	HZ	HZ	HZ	HZ	HZ	HZ	HZ	HZ	HZ	HZ	HZ	HZ	HZ	HZ	HZ	HZ
Burrard	3890	Caution	+10%			KS	KS	KS	K	KRSU	KSU	KSU	K	KRSU	KRSU	KSU	KSTU	KSU	KSU	KSU	KRSU	KSU
Burrard Ground Cloth	3891	Unsuitable	+0%			HZ	HZ	HZ	HZ	HZ	HZ	HZ	HZ	HZ	HZ	HZ	HZ	HZ	HZ	HZ	HZ	HZ
Bute Lewis	3803	Unsuitable	+0%			AZ	AZ	AZ	AZ	AZ	AZ	AZ	AZ	AZ	AZ	AZ	AZ	AZ	AZ	AZ	AZ	AZ
Bute Storr	3805	Caution	+0%	•		CKS	CKS	CKS	CK	CKRSU	CKSU	CKSU	CK	CKRSU	CKRSU	CKSU	CKSTU	CKSU	CKSU	CKSU	CKRSU	CKSU
Bute Tiree	3805	Caution	+0%	•		CS	CS	CS	C	CRSU	CSU	CSU	C	CRSU	CRSU	CSU	CSTU	CSU	CSU	CSU	CRSU	CSU
Bute Tweed	3805	Caution	+0%	•		CS	CS	CS	C	CRSU	CSU	CSU	C	CRSU	CRSU	CSU	CSTU	CSU	CSU	CSU	CRSU	CSU
Carom	3847	Unsuitable	+20%			HZ	HZ	HZ	HZ	HZ	HZ	HZ	HZ	HZ	HZ	HZ	HZ	HZ	HZ	HZ	HZ	HZ
Chenille Chevron	3173	Caution	+20%			S	S	S		RSU	SU	SU		RSU	RSU	SU	STU	SU	SU	SU	RSU	SU
Chunky Tweed	3172	Caution	+0%			S	S	S		RSU	SU	SU		RSU	RSU	SU	STU	SU	SU	SU	RSU	SU
Circle Jacquard	3039	Caution	+25%			S	S	S		RSU	SU	SU		RSU	RSU	SU	STU	SU	SU	SU	RSU	SU
Clad Celliant	3976	Caution	+0%			S	S	S		RSU	SU	SU		RSU	RSU	SU	STU	SU	SU	SU	RSU	SU
Clerkenwell	3562	Caution	+25%			AS	AS	AS	A	ARSU	ASU	ASU	A	ARSU	ARSU	ASU	ASTU	ASU	ASU	ASU	ARSU	ASU
Cloud Velvet	4144	Approved	+0%			Y	Y	Y	Y	Y	Y	Y	Y	Y	Y	Y	Y	Y	Y	Y	Y	Y
Code	3822	Unsuitable	+15%			AHZ	AHZ	AHZ	AHZ	AHZ	AHZ	AHZ	AHZ	AHZ	AHZ	AHZ	AHZ	AHZ	AHZ	AHZ	AHZ	AHZ
Collier	3885	Caution	+25%			S	S	S		RSU	SU	SU		RSU	RSU	SU	STU	SU	SU	SU	RSU	SU
Colten	3673	Caution	+10%			BS	BS	BS	B	BRSU	BSU	BSU	B	BRSU	BRSU	BSU	BSTU	BSU	BSU	BSU	BRSU	BSU
Concentric	3154	Caution	+25%			S	S	S		RSU	SU	SU		RSU	RSU	SU	STU	SU	SU	SU	RSU	SU
Corded	3170	Caution	+0%			Y	Y	Y	Y	Y	Y	Y	Y	Y	Y	Y	Y	Y	Y	Y	Y	Y



### Grade

Price grades correlate to those listed in the List Price Schedule for products with upholstery materials.

Please contact Customer Service for patterns graded as **Quote**.

### Extra Material Required

Yardage adjustments are required for those patterns less than 54 inches wide and/or having more than a nominal vertical repeat. This percentage amount must be added to the yardage requirement shown in the TUOHY List Prices and Specification Guide. Price grades shown here have already been adjusted as needed.

### Evaluation Codes

- A Seam, needle, top issues
- B Frays, unravels
- C Knit backing required
- D Acrylic backing required
- E Stretchy, wrinkles, puddles
- F Surface, pattern distorts
- G Creases, abrades, durability
- H Humidity
- I No tufting - nap, pattern
- J Glues poorly
- K Very thick
- L Thin, porous
- M Steams poorly
- N Memory weak
- O Color striates
- P No center seam

- R OK Loose seat or back
- S OK Tight seat or back
- T OK Lumbar
- U OK Arm & body
- V OK Center seam
- W OK Tufting
- X OK Gluing
- Y Approved
- Z Unsuitable

### Tuohy Furniture Corporation

42 Saint Albans Place  
 Chatfield, Minnesota 55923  
 e: info@tuohyfurniture.com  
 t: 507.867.4280  
 www.tuohyfurniture.com

When backing is required, the surcharge will be \$341 List for 5 – 22 yds; over 22 yds is \$15.50 List per yd. Add 1 week to lead time.

**\*\*Grading Note:** Due to the current volatility of fabric pricing, we will no longer be listing grades on our website. Please see your customer service representative for current graded price.

**Evaluation Codes by Product**

Pattern Name	Pattern Number	Evaluation	Grade**	Material Req'd	Backing Req'd	902	Aim	Arcelle	Bau	Bryant Park	Domino	Edo	Fabric Panels	Genevieve	International	International II	Kaesi	Leit	Moderna	Ren	Selone	Vita	
Course	3779	Unsuitable	+25%			HZ	HZ	HZ	HZ	HZ	HZ	HZ	HZ	HZ	HZ	HZ	HZ	HZ	HZ	HZ	HZ	HZ	HZ
CrissCross	3959	Caution	Quote			S	S	S		RSU	SU	SU	RSU	RSU	SU	STU	SU	SU	SU	SU	RSU	SU	
Crossweave	3762	Caution	+0%			S	S	S		RSU	SU	SU	RSU	RSU	SU	STU	SU	SU	SU	SU	RSU	SU	
Crosswind	3601	Caution	+10%			S	S	S		RSU	SU	SU	RSU	RSU	SU	STU	SU	SU	SU	SU	RSU	SU	
Cubitt	3942	Caution	+20%			S	S	S		RSU	SU	SU	RSU	RSU	SU	STU	SU	SU	SU	SU	RSU	SU	
Current	3599	Caution	+10%			S	S	S	X	RSU	SU	SU	X	RSU	RSU	SU	STU	SU	SU	SU	RSU	SU	
Dapple	3937	Caution	+0%		•	BCS	BCS	BCS	BC	BCRSU	BCSU	BCSU	BC	BCRSU	BCRSU	BCSU	BCSTU	BCSU	BCSU	BCSU	BCRSU	BCSU	
Distressed Texture	3935	Caution	+0%			S	S	S		RSU	SU	SU		RSU	RSU	SU	STU	SU	SU	SU	RSU	SU	
Double Weave	3884	Caution	+10%			S	S	S		RSU	SU	SU		RSU	RSU	SU	STU	SU	SU	SU	RSU	SU	
Draft	3703	Unsuitable	+15%			AHJLZ	AHJLZ	AHJLZ	AHJLZ	AHJLZ	AHJLZ	AHJLZ	AHJLZ	AHJLZ	AHJLZ	AHJLZ	AHJLZ	AHJLZ	AHJLZ	AHJLZ	AHJLZ	AHJLZ	AHJLZ
Drift	3718	Caution	+0%		•	BCS	BCS	BCS	BC	BCRSU	BCSU	BCSU	BC	BCRSU	BCRSU	BCSU	BCSTU	BCSU	BCSU	BCSU	BCRSU	BCSU	
Encircle	3978	Caution	+25%			S	S	S		RSU	SU	SU		RSU	RSU	SU	STU	SU	SU	SU	RSU	SU	
Everywhere Texture	4147	Caution	+0%		•	BCS	BCS	BCS	BC	BCRSU	BCSU	BCSU	BC	BCRSU	BCRSU	BCSU	BCSTU	BCSU	BCSU	BCSU	BCRSU	BCSU	
Finsbury	3943	Unsuitable	+35%			KZ	KZ	KZ	KZ	KZ	KZ	KZ	KZ	KZ	KZ	KZ	KZ	KZ	KZ	KZ	KZ	KZ	KZ
Five Cities	3960	Caution	Quote			S	S	S		RSU	SU	SU		RSU	RSU	SU	STU	SU	SU	SU	RSU	SU	
Flow	3872	Caution	+25%		•	BCS	BCS	BCS	BC	BCRSU	BCSU	BCSU	BC	BCRSU	BCRSU	BCSU	BCSTU	BCSU	BCSU	BCSU	BCRSU	BCSU	
Fluent	3896	Unsuitable	+10%			AZ	AZ	AZ	AZ	AZ	AZ	AZ	AZ	AZ	AZ	AZ	AZ	AZ	AZ	AZ	AZ	AZ	AZ
FOMO	3931	Caution	+0%			S	S	S	X	RSU	SU	SU	X	RSU	RSU	SU	STU	SU	SU	SU	RSU	SU	
Forestbound	3835	Caution	+0%			S	S	S		RSU	SU	SU		RSU	RSU	SU	STU	SU	SU	SU	RSU	SU	
Gale	3573	Caution	+0%			S	S	S		RSU	SU	SU		RSU	RSU	SU	STU	SU	SU	SU	RSU	SU	
Gamut	3468	Caution	+0%		•	CS	CS	CS	C	CRSU	CSU	CSU	C	CRSU	CRSU	CSU	CSTU	CSU	CSU	CSU	CRSU	CSU	
Gamut Celliant	3917	Caution	+0%			S	S	S		RSU	SU	SU		RSU	RSU	SU	STU	SU	SU	SU	RSU	SU	
Geometric li	3836	Caution	+20%		•	BCS	BCS	BCS	BC	BCRSU	BCSU	BCSU	BC	BCRSU	BCRSU	BCSU	BCSTU	BCSU	BCSU	BCSU	BCRSU	BCSU	
Gleam	3708	Unsuitable	+0%			HZ	HZ	HZ	HZ	HZ	HZ	HZ	HZ	HZ	HZ	HZ	HZ	HZ	HZ	HZ	HZ	HZ	HZ
Glimmer	3006	Caution	+0%			S	S	S		RSU	SU	SU		RSU	RSU	SU	STU	SU	SU	SU	RSU	SU	
Gradate	3421	Unsuitable	+15%			ABZ	ABZ	ABZ	ABZ	ABZ	ABZ	ABZ	ABZ	ABZ	ABZ	ABZ	ABZ	ABZ	ABZ	ABZ	ABZ	ABZ	ABZ
Halyard	3851	Caution	+25%			S	S	S		RSU	SU	SU		RSU	RSU	SU	STU	SU	SU	SU	RSU	SU	
Handsome Plaid	3904	Caution	+25%			AS	AS	AS	A	ARSU	ASU	ASU	A	ARSU	ARSU	ASU	ASTU	ASU	ASU	ASU	ARSU	ASU	
Hashtag	3662	Caution	+0%			S	S	S		RSU	SU	SU		RSU	RSU	SU	STU	SU	SU	SU	RSU	SU	
Hatchmark	3761	Unsuitable	Quote			HZ	HZ	HZ	HZ	HZ	HZ	HZ	HZ	HZ	HZ	HZ	HZ	HZ	HZ	HZ	HZ	HZ	HZ
Heather	3473	Approved	+0%			Y	Y	Y	Y	Y	Y	Y	Y	Y	Y	Y	Y	Y	Y	Y	Y	Y	Y
Hem Stitch	3752	Caution	+0%			S	S	S		RSU	SU	SU		RSU	RSU	SU	STU	SU	SU	SU	RSU	SU	
Hint	3776	Caution	+0%			S	S	S		RSU	SU	SU		RSU	RSU	SU	STU	SU	SU	SU	RSU	SU	
Holmes	3624	Caution	+0%			S	S	S		RSU	SU	SU		RSU	RSU	SU	STU	SU	SU	SU	RSU	SU	
Hyde	3888	Caution	+0%			S	S	S		RSU	SU	SU		RSU	RSU	SU	STU	SU	SU	SU	RSU	SU	
Hyphen	3557	Caution	+0%			S	S	S		RSU	SU	SU		RSU	RSU	SU	STU	SU	SU	SU	RSU	SU	
Ink	3773	Unsuitable	+25%			HZ	HZ	HZ	HZ	HZ	HZ	HZ	HZ	HZ	HZ	HZ	HZ	HZ	HZ	HZ	HZ	HZ	HZ
Interlock	3506	Unsuitable	+20%			FGZ	FGZ	FGZ	FGZ	FGZ	FGZ	FGZ	FGZ	FGZ	FGZ	FGZ	FGZ	FGZ	FGZ	FGZ	FGZ	FGZ	FGZ
Interlude	3852	Caution	+25%			S	S	S		RSU	SU	SU		RSU	RSU	SU	STU	SU	SU	SU	RSU	SU	
Iota	3008	Approved	+0%			Y	Y	Y	Y	Y	Y	Y	Y	Y	Y	Y	Y	Y	Y	Y	Y	Y	Y
Jacquard I	3032	Unsuitable	Quote			HZ	HZ	HZ	HZ	HZ	HZ	HZ	HZ	HZ	HZ	HZ	HZ	HZ	HZ	HZ	HZ	HZ	HZ
Jacquard li	3033	Unsuitable	+25%			AZ	AZ	AZ	AZ	AZ	AZ	AZ	AZ	AZ	AZ	AZ	AZ	AZ	AZ	AZ	AZ	AZ	AZ
Jaunt	3568	Unsuitable	+20%			HZ	HZ	HZ	HZ	HZ	HZ	HZ	HZ	HZ	HZ	HZ	HZ	HZ	HZ	HZ	HZ	HZ	HZ
Josef	3842	Caution	+0%		•	BCS	BCS	BCS	BC	BCRSU	BCSU	BCSU	BC	BCRSU	BCRSU	BCSU	BCSTU	BCSU	BCSU	BCSU	BCRSU	BCSU	
Jumper	3878	Caution	10%		•	BCS	BCS	BCS	BC	BCRSU	BCSU	BCSU	BC	BCRSU	BCRSU	BCSU	BCSTU	BCSU	BCSU	BCSU	BCRSU	BCSU	



**Grade**

Price grades correlate to those listed in the List Price Schedule for products with upholstery materials.

Please contact Customer Service for patterns graded as **Quote**.

**Extra Material Required**

Yardage adjustments are required for those patterns less than 54 inches wide and/or having more than a nominal vertical repeat. This percentage amount must be added to the yardage requirement shown in the TUOHY List Prices and Specification Guide. Price grades shown here have already been adjusted as needed.

**Evaluation Codes**

- A Seam, needle, top issues
- B Frays, unravels
- C Knit backing required
- D Acrylic backing required
- E Stretchy, wrinkles, puddles
- F Surface, pattern distorts
- G Creases, abrades, durability
- H Humidity
- I No tufting - nap, pattern
- J Glues poorly
- K Very thick
- L Thin, porous
- M Steams poorly
- N Memory weak
- O Color striates
- P No center seam

- R OK Loose seat or back
- S OK Tight seat or back
- T OK Lumbar
- U OK Arm & body
- V OK Center seam
- W OK Tufting
- X OK Gluing
- Y Approved
- Z Unsuitable

**Tuohy Furniture Corporation**

42 Saint Albans Place  
 Chatfield, Minnesota 55923  
 e: info@tuohyfurniture.com  
 t: 507.867.4280  
 www.tuohyfurniture.com

When backing is required, the surcharge will be \$341  
List for 5 – 22 yds; over 22 yds is \$15.50 List per yd.  
Add 1 week to lead time.

\*\*Grading Note: Due to the current volatility of fabric pricing, we will no longer be listing grades on our website.  
Please see your customer service representative for current graded price.

**Evaluation Codes by Product**

Pattern Name	Pattern Number	Evaluation	Grade**	Material Req'd	Backing Req'd	902	Aim	Arcelle	Bau	Bryant Park	Domino	Edo	Fabric Panels	Genevieve	International	International II	Kaesi	Leit	Moderna	Rien	Selone	Vita	
Kami	3874	Caution	+10%	S	S	S	S	S	RSU	SU	SU	RSU	RSU	SU	STU	SU	SU	SU	SU	RSU	SU	SU	
Keen	3975	Caution	+15%	S	S	S	X	RSU	SU	SU	X	RSU	RSU	SU	STU	SU	SU	SU	SU	RSU	SU	SU	
Kindred	3159	Caution	+20%	S	S	S	RSU	SU	SU	SU	RSU	RSU	SU	STU	SU	SU	SU	SU	SU	RSU	SU	SU	
Kith	3004	Caution	+0%	S	S	S	RSU	SU	SU	RSU	RSU	SU	STU	SU	SU	SU	SU	SU	SU	RSU	SU	SU	
Lambert	3623	Caution	+0%	BCS	BCS	BCS	BC	BCRSU	BCSU	BCSU	BC	BCRSU	BCRSU	BCSU	BCSTU	BCSU	BCSU	BCSU	BCSU	BCRSU	BCSU	BCSU	
Large Scale Geometric	3893	Unsuitable	Quote	HZ	HZ	HZ	HZ	HZ	HZ	HZ	HZ	HZ	HZ	HZ	HZ	HZ	HZ	HZ	HZ	HZ	HZ	HZ	
Latitude	3777	Unsuitable	+15%	HZ	HZ	HZ	HZ	HZ	HZ	HZ	HZ	HZ	HZ	HZ	HZ	HZ	HZ	HZ	HZ	HZ	HZ	HZ	
Lattice	3678	Unsuitable	+10%	HZ	HZ	HZ	HZ	HZ	HZ	HZ	HZ	HZ	HZ	HZ	HZ	HZ	HZ	HZ	HZ	HZ	HZ	HZ	
Layer	3165	Caution	+0%	S	S	S	X	RSU	SU	SU	X	RSU	RSU	SU	STU	SU	SU	SU	SU	RSU	SU	SU	
Leap	3600	Caution	+15%	S	S	S	RSU	SU	SU	SU	RSU	RSU	SU	STU	SU	SU	SU	SU	SU	RSU	SU	SU	
Line Variations	3961	Caution	0%	S	S	S	RSU	SU	SU	RSU	RSU	SU	STU	SU	SU	SU	SU	SU	SU	RSU	SU	SU	
Linen Like	3928	Unsuitable	+0%	AZ	AZ	AZ	AZ	AZ	AZ	AZ	AZ	AZ	AZ	AZ	AZ	AZ	AZ	AZ	AZ	AZ	AZ	AZ	AZ
Linnen	3921	Caution	+0%	S	S	S	RSU	SU	SU	RSU	RSU	SU	STU	SU	SU	SU	SU	SU	SU	RSU	SU	SU	
Little Dot	3524	Caution	+0%	S	S	S	RSU	SU	SU	RSU	RSU	SU	STU	SU	SU	SU	SU	SU	SU	RSU	SU	SU	
Loop To Loop	3467	Caution	+0%	S	S	S	X	RSU	SU	SU	X	RSU	RSU	SU	STU	SU	SU	SU	SU	RSU	SU	SU	
Lounge	3162	Caution	+0%	S	S	S	X	RSU	SU	SU	X	RSU	RSU	SU	STU	SU	SU	SU	SU	RSU	SU	SU	
Lumi	3901	Caution	+20%	S	S	S	RSU	SU	SU	RSU	RSU	SU	STU	SU	SU	SU	SU	SU	SU	RSU	SU	SU	
Luster	3701	Unsuitable	+0%	GOZ	GOZ	GOZ	GOZ	GOZ	GOZ	GOZ	GOZ	GOZ	GOZ	GOZ	GOZ	GOZ	GOZ	GOZ	GOZ	GOZ	GOZ	GOZ	GOZ
Mark	3946	Unsuitable	+0%	HZ	HZ	HZ	HZ	HZ	HZ	HZ	HZ	HZ	HZ	HZ	HZ	HZ	HZ	HZ	HZ	HZ	HZ	HZ	
Mateo	3895	Caution	+0%	BCS	BCS	BCS	BC	BCRSU	BCSU	BCSU	BC	BCRSU	BCRSU	BCSU	BCSTU	BCSU	BCSU	BCSU	BCSU	BCRSU	BCSU	BCSU	
Measure	3794	Unsuitable	+10%	AZ	AZ	AZ	AZ	AZ	AZ	AZ	AZ	AZ	AZ	AZ	AZ	AZ	AZ	AZ	AZ	AZ	AZ	AZ	AZ
Melange	3492	Caution	+0%	S	S	S	RSU	SU	SU	RSU	RSU	SU	STU	SU	SU	SU	SU	SU	SU	RSU	SU	SU	
Metallo	3889	Unsuitable	+0%	FGZ	FGZ	FGZ	FGZ	FGZ	FGZ	FGZ	FGZ	FGZ	FGZ	FGZ	FGZ	FGZ	FGZ	FGZ	FGZ	FGZ	FGZ	FGZ	FGZ
Metta	2681	Caution	+0%	S	S	S	RSU	SU	SU	RSU	RSU	SU	STU	SU	SU	SU	SU	SU	SU	RSU	SU	SU	
Microgrid	3514	Caution	+0%	S	S	S	RSU	SU	SU	RSU	RSU	SU	STU	SU	SU	SU	SU	SU	SU	RSU	SU	SU	
Minnie	4132	Caution	+0%	S	S	S	RSU	SU	SU	RSU	RSU	SU	STU	SU	SU	SU	SU	SU	SU	RSU	SU	SU	
Mod	3713	Unsuitable	+15%	HZ	HZ	HZ	HZ	HZ	HZ	HZ	HZ	HZ	HZ	HZ	HZ	HZ	HZ	HZ	HZ	HZ	HZ	HZ	
Mohair Plus	3575	Caution	+0%	KS	KS	KS	K	KRSU	KSU	KSU	K	KRSU	KRSU	KSU	KSTU	KSU	KSU	KSU	KSU	KRSU	KSU	KSU	
Moquette	3786	Caution	+25%	S	S	S	RSU	SU	SU	RSU	RSU	SU	STU	SU	SU	SU	SU	SU	SU	RSU	SU	SU	
Motif	3693	Unsuitable	+25%	HZ	HZ	HZ	HZ	HZ	HZ	HZ	HZ	HZ	HZ	HZ	HZ	HZ	HZ	HZ	HZ	HZ	HZ	HZ	
Mountainous	3034	Approved	10%	Y	Y	Y	Y	Y	Y	Y	Y	Y	Y	Y	Y	Y	Y	Y	Y	Y	Y	Y	
Nest	3011	Approved	+0%	Y	Y	Y	Y	Y	Y	Y	Y	Y	Y	Y	Y	Y	Y	Y	Y	Y	Y	Y	
Net	3869	Unsuitable	+25%	AZ	AZ	AZ	AZ	AZ	AZ	AZ	AZ	AZ	AZ	AZ	AZ	AZ	AZ	AZ	AZ	AZ	AZ	AZ	AZ
Nook	3906	Caution	+0%	S	S	S	RSU	SU	SU	RSU	RSU	SU	STU	SU	SU	SU	SU	SU	SU	RSU	SU	SU	
Opulent	3456	Unsuitable	+0%	ABZ	ABZ	ABZ	ABZ	ABZ	ABZ	ABZ	ABZ	ABZ	ABZ	ABZ	ABZ	ABZ	ABZ	ABZ	ABZ	ABZ	ABZ	ABZ	ABZ
Otto	4143	Caution	20%	LS	LS	LS	L	LRSU	LSU	LSU	L	LRSU	LRSU	LSU	LSTU	LSU	LSU	LSU	LSU	LRSU	LSU	LSU	
Pause	3854	Caution	+0%	S	S	S	X	RSU	SU	SU	X	RSU	RSU	SU	STU	SU	SU	SU	SU	RSU	SU	SU	
Pave	3031	Caution	+25%	S	S	S	X	RSU	SU	SU	X	RSU	RSU	SU	STU	SU	SU	SU	SU	RSU	SU	SU	
Pennant	3965	Caution	+25%	S	S	S	X	RSU	SU	SU	X	RSU	RSU	SU	STU	SU	SU	SU	SU	RSU	SU	SU	
Pennant Celliant	3981	Caution	+25%	S	S	S	RSU	SU	SU	RSU	RSU	SU	STU	SU	SU	SU	SU	SU	SU	RSU	SU	SU	
Pennington	3635	Caution	+25%	S	S	S	RSU	SU	SU	RSU	RSU	SU	STU	SU	SU	SU	SU	SU	SU	RSU	SU	SU	
Phenomena	3879	Unsuitable	+20%	HZ	HZ	HZ	HZ	HZ	HZ	HZ	HZ	HZ	HZ	HZ	HZ	HZ	HZ	HZ	HZ	HZ	HZ	HZ	
Pika	3538	Approved	+0%	Y	Y	Y	Y	Y	Y	Y	Y	Y	Y	Y	Y	Y	Y	Y	Y	Y	Y	Y	
Pinball	3572	Unsuitable	+20%	HZ	HZ	HZ	HZ	HZ	HZ	HZ	HZ	HZ	HZ	HZ	HZ	HZ	HZ	HZ	HZ	HZ	HZ	HZ	
Pinpoint	3778	Unsuitable	+10%	HZ	HZ	HZ	HZ	HZ	HZ	HZ	HZ	HZ	HZ	HZ	HZ	HZ	HZ	HZ	HZ	HZ	HZ	HZ	



**Grade**

Price grades correlate to those listed in the List Price Schedule for products with upholstery materials.

Please contact Customer Service for patterns graded as **Quote**.

**Extra Material Required**

Yardage adjustments are required for those patterns less than 54 inches wide and/or having more than a nominal vertical repeat. This percentage amount must be added to the yardage requirement shown in the TUOHY List Prices and Specification Guide. Price grades shown here have already been adjusted as needed.

**Evaluation Codes**

- A Seam, needle, top issues
- B Frays, unravels
- C Knit backing required
- D Acrylic backing required
- E Stretchy, wrinkles, puddles
- F Surface, pattern distorts
- G Creases, abrades, durability
- H Humidity
- I No tufting - nap, pattern
- J Glues poorly
- K Very thick
- L Thin, porous
- M Steams poorly
- N Memory weak
- O Color striates
- P No center seam

- R OK Loose seat or back
- S OK Tight seat or back
- T OK Lumbar
- U OK Arm & body
- V OK Center seam
- W OK Tufting
- X OK Gluing
- Y Approved
- Z Unsuitable

**Tuohy Furniture Corporation**

42 Saint Albans Place  
Chatfield, Minnesota 55923  
e: info@tuohyfurniture.com  
t: 507.867.4280  
www.tuohyfurniture.com

\*\*Grading Note: Due to the current volatility of fabric pricing, we will no longer be listing grades on our website. Please see your customer service representative for current graded price.

# DESIGNTEX

When backing is required, the surcharge will be \$341 List for 5 – 22 yds; over 22 yds is \$15.50 List per yd. Add 1 week to lead time.

## Evaluation Codes by Product

February 1, 2020

Pattern Name	Pattern Number	Evaluation	Grade**	Material Req'd	Backing Req'd	902	Aim	Arcelle	Bau	Bryant Park	Domino	Edo	Fabric Panels	Genevieve	International	International II	Kaesi	Leit	Moderna	Ren	Selone	Vita
Pivot	3374	Approved	+0%			Y	Y	Y	Y	Y	Y	Y	Y	Y	Y	Y	Y	Y	Y	Y	Y	Y
Pixel	3826	Caution	Quote			S	S	S		RSU	SU	SU		RSU	RSU	SU	STU	SU	SU	SU	RSU	SU
Pixel Cloud	3886	Unsuitable	10%			ABZ	ABZ	ABZ	ABZ	ABZ	ABZ	ABZ	ABZ	ABZ	ABZ	ABZ	ABZ	ABZ	ABZ	ABZ	ABZ	ABZ
Plaid	3782	Caution	+25%			BCS	BCS	BCS	BC	BCRSU	BCSU	BCSU	BC	BCRSU	BCRSU	BCSU	BCSTU	BCSU	BCSU	BCSU	BCRSU	BCSU
Plexus	3129	Unsuitable	+25%			ABZ	ABZ	ABZ	ABZ	ABZ	ABZ	ABZ	ABZ	ABZ	ABZ	ABZ	ABZ	ABZ	ABZ	ABZ	ABZ	ABZ
Plus	3042	Caution	+0%			S	S	S		RSU	SU	SU		RSU	RSU	SU	STU	SU	SU	SU	RSU	SU
Prime	3602	Caution	+0%			Y	Y	Y	Y	Y	Y	Y	Y	Y	Y	Y	Y	Y	Y	Y	Y	Y
Queue	3811	Unsuitable	+20%			HZ	HZ	HZ	HZ	HZ	HZ	HZ	HZ	HZ	HZ	HZ	HZ	HZ	HZ	HZ	HZ	HZ
Raia	3157	Caution	+25%			S	S	S		RSU	SU	SU		RSU	RSU	SU	STU	SU	SU	SU	RSU	SU
Rainwater	3837	Caution	+15%			S	S	S		RSU	SU	SU		RSU	RSU	SU	STU	SU	SU	SU	RSU	SU
Reppweave	3747	Unsuitable	+0%			AZ	AZ	AZ	AZ	AZ	AZ	AZ	AZ	AZ	AZ	AZ	AZ	AZ	AZ	AZ	AZ	AZ
Rider	3007	Caution	+0%			S	S	S		RSU	SU	SU		RSU	RSU	SU	STU	SU	SU	SU	RSU	SU
Rise	3809	Approved	+0%			Y	Y	Y	Y	Y	Y	Y	Y	Y	Y	Y	Y	Y	Y	Y	Y	Y
Rocket	2693	Caution	+0%			S	S	S		RSU	SU	SU		RSU	RSU	SU	STU	SU	SU	SU	RSU	SU
Rodenback	3793	Caution	+0%			BCS	BCS	BCS	BC	BCRSU	BCSU	BCSU	BC	BCRSU	BCRSU	BCSU	BCSTU	BCSU	BCSU	BCSU	BCRSU	BCSU
Rotary	3497	Unsuitable	+25%			HZ	HZ	HZ	HZ	HZ	HZ	HZ	HZ	HZ	HZ	HZ	HZ	HZ	HZ	HZ	HZ	HZ
Sail	3909	Caution	20%			S	S	S		RSU	SU	SU		RSU	RSU	SU	STU	SU	SU	SU	RSU	SU
Samba	2654	Approved	+0%			Y	Y	Y	Y	Y	Y	Y	Y	Y	Y	Y	Y	Y	Y	Y	Y	Y
Scale	3950	Caution	+20%			FS	FS	FS	F	FRSU	FSU	FSU	F	FRSU	FRSU	FSU	FSTU	FSU	FSU	FSU	FRSU	FSU
Schism	3952	Caution	+0%			S	S	S		RSU	SU	SU		RSU	RSU	SU	STU	SU	SU	SU	RSU	SU
Score	3866	Unsuitable	+25%			HZ	HZ	HZ	HZ	HZ	HZ	HZ	HZ	HZ	HZ	HZ	HZ	HZ	HZ	HZ	HZ	HZ
Sense	3947	Unsuitable	Quote			HZ	HZ	HZ	HZ	HZ	HZ	HZ	HZ	HZ	HZ	HZ	HZ	HZ	HZ	HZ	HZ	HZ
Shortcut	3810	Unsuitable	+25%			AZ	AZ	AZ	AZ	AZ	AZ	AZ	AZ	AZ	AZ	AZ	AZ	AZ	AZ	AZ	AZ	AZ
Silicone Element	3919	Approved	+0%			Y	Y	Y	Y	Y	Y	Y	Y	Y	Y	Y	Y	Y	Y	Y	Y	Y
Silicone Element Celliant	3979	Caution	+0%			S	S	S		RSU	SU	SU		RSU	RSU	SU	STU	SU	SU	SU	RSU	SU
Silicone Nappa	3156	Caution	+0%			S	S	S		RSU	SU	SU		RSU	RSU	SU	STU	SU	SU	SU	RSU	SU
Singing In The Rain	6418	Unsuitable	+0%			AZ	AZ	AZ	AZ	AZ	AZ	AZ	AZ	AZ	AZ	AZ	AZ	AZ	AZ	AZ	AZ	AZ
Sketch	3849	Caution	+20%			S	S	S		RSU	SU	SU		RSU	RSU	SU	STU	SU	SU	SU	RSU	SU
Social Dance	3962	Caution	Quote			S	S	S		RSU	SU	SU		RSU	RSU	SU	STU	SU	SU	SU	RSU	SU
Sorano	3403	Caution	+0%			S	S	S		RSU	SU	SU		RSU	RSU	SU	STU	SU	SU	SU	RSU	SU
Span	3954	Unsuitable	+0%			ALZ	ALZ	ALZ	ALZ	ALZ	ALZ	ALZ	ALZ	ALZ	ALZ	ALZ	ALZ	ALZ	ALZ	ALZ	ALZ	ALZ
Spandau	3410	Approved	+0%			Y	Y	Y	Y	Y	Y	Y	Y	Y	Y	Y	Y	Y	Y	Y	Y	Y
Splice	3953	Unsuitable	+10%			AZ	AZ	AZ	AZ	AZ	AZ	AZ	AZ	AZ	AZ	AZ	AZ	AZ	AZ	AZ	AZ	AZ
Split	3949	Unsuitable	+10%			AZ	AZ	AZ	AZ	AZ	AZ	AZ	AZ	AZ	AZ	AZ	AZ	AZ	AZ	AZ	AZ	AZ
Standard	3040	Caution	+20%			S	S	S		RSU	SU	SU		RSU	RSU	SU	STU	SU	SU	SU	RSU	SU
Starburst	3748	Caution	+20%			S	S	S		RSU	SU	SU		RSU	RSU	SU	STU	SU	SU	SU	RSU	SU
Stratum	3868	Caution	+10%			S	S	S		RSU	SU	SU		RSU	RSU	SU	STU	SU	SU	SU	RSU	SU
Stride	3955	Caution	+0%			Y	Y	Y	Y	Y	Y	Y	Y	Y	Y	Y	Y	Y	Y	Y	Y	Y
Subtle	3951	Caution	+0%			S	S	S		RSU	SU	SU		RSU	RSU	SU	STU	SU	SU	SU	RSU	SU
Sunburst	3521	Unsuitable	+15%			AZ	AZ	AZ	AZ	AZ	AZ	AZ	AZ	AZ	AZ	AZ	AT	AZ	AZ	AZ	AZ	AZ
Swing	3712	Unsuitable	+25%			HZ	HZ	HZ	HZ	HZ	HZ	HZ	HZ	HZ	HZ	HZ	HZ	HZ	HZ	HZ	HZ	HZ
System	3856	Unsuitable	+20%			AZ	AZ	AZ	AZ	AZ	AZ	AZ	AZ	AZ	AZ	AZ	AZ	AZ	AZ	AZ	AZ	AZ
Tack Cloth	3749	Caution	+0%			KS	KS	KS	K	KRSU	KSU	KSU	K	KRSU	KRSU	KSU	KSTU	KSU	KSU	KSU	KRSU	KSU
Tailor	3163	Caution	+0%			S	S	S		RSU	SU	SU		RSU	RSU	SU	STU	SU	SU	SU	RSU	SU
Tap	3948	Unsuitable	+15%			HZ	HZ	HZ	HZ	HZ	HZ	HZ	HZ	HZ	HZ	HZ	HZ	HZ	HZ	HZ	HZ	HZ



### Grade

Price grades correlate to those listed in the List Price Schedule for products with upholstery materials.

Please contact Customer Service for patterns graded as **Quote**.

### Extra Material Required

Yardage adjustments are required for those patterns less than 54 inches wide and/or having more than a nominal vertical repeat. This percentage amount must be added to the yardage requirement shown in the TUOHY List Prices and Specification Guide. Price grades shown here have already been adjusted as needed.

### Evaluation Codes

- A Seam, needle, top issues
- B Frays, unravels
- C Knit backing required
- D Acrylic backing required
- E Stretchy, wrinkles, puddles
- F Surface, pattern distorts
- G Creases, abrades, durability
- H Humidity
- I No tufting - nap, pattern
- J Glues poorly
- K Very thick
- L Thin, porous
- M Steams poorly
- N Memory weak
- O Color striates
- P No center seam

- R OK Loose seat or back
- S OK Tight seat or back
- T OK Lumbar
- U OK Arm & body
- V OK Center seam
- W OK Tufting
- X OK Gluing
- Y Approved
- Z Unsuitable

### Tuohy Furniture Corporation

42 Saint Albans Place  
 Chatfield, Minnesota 55923  
 e: info@tuohyfurniture.com  
 t: 507.867.4280  
 www.tuohyfurniture.com



**\*\*Grading Note:** Due to the current volatility of fabric pricing, we will no longer be listing grades on our website.  
Please see your customer service representative for current graded price.

# DESIGNTEX

When backing is required, the surcharge will be \$341 List for 5 – 22 yds; over 22 yds is \$15.50 List per yd.  
Add 1 week to lead time.

## Evaluation Codes by Product

February 1, 2020

Pattern Name	Pattern Number	Evaluation	Grade**	Material Req'd	Backing Req'd	902	Aim	Arcelle	Bau	Bryant Park	Domino	Edo	Fabric Panels	Genevieve	International	International II	Kaesi	Leit	Moderna	Rien	Selone	Vita	
Terra	3858	Caution	+0%	S		S	S	S		RSU	SU	SU		RSU	RSU	SU	STU	SU	SU	SU	RSU	SU	
Tilt	3001	Approved	15%	Y		Y	Y	Y	Y	Y	Y	Y	Y	Y	Y	Y	Y	Y	Y	Y	Y	Y	Y
Tiny Boucle	3962	Approved	+0%	Y		Y	Y	Y	Y	Y	Y	Y	Y	Y	Y	Y	Y	Y	Y	Y	Y	Y	Y
Tiny Herringbone	3741	Caution	+0%	S		S	S	S		RSU	SU	SU		RSU	RSU	SU	STU	SU	SU	SU	RSU	SU	
Tramway	3472	Unsuitable	+10%	HZ		HZ	HZ	HZ	HZ	HZ	HZ	HZ	HZ	HZ	HZ	HZ	HZ	HZ	HZ	HZ	HZ	HZ	HZ
Treeline	3864	Caution	+10%	FS		FS	FS	FS	F	FRSU	FSU	FSU	F	FRSU	FRSU	FSU	FSTU	FSU	FSU	FSU	FRSU	FSU	
Trim	3902	Caution	+10%	S		S	S	S		RSU	SU	SU		RSU	RSU	SU	STU	SU	SU	SU	RSU	SU	
Trove	3839	Approved	+0%	Y		Y	Y	Y	Y	Y	Y	Y	Y	Y	Y	Y	Y	Y	Y	Y	Y	Y	Y
Tweed Multi	3722	Approved	+0%	Y		Y	Y	Y	Y	Y	Y	Y	Y	Y	Y	Y	Y	Y	Y	Y	Y	Y	Y
Ulster	4149	Approved	+0%	Y		Y	Y	Y	Y	Y	Y	Y	Y	Y	Y	Y	Y	Y	Y	Y	Y	Y	Y
Ulster Upholstery	3957	Caution	+0%	S		S	S	S		RSU	SU	SU		RSU	RSU	SU	STU	SU	SU	SU	RSU	SU	
Velvet Corduroy	3012	Caution	+0%	S		S	S	S		RSU	SU	SU		RSU	RSU	SU	STU	SU	SU	SU	RSU	SU	
Vero	3857	Caution	+0%	S		S	S	S	X	RSU	SU	SU	X	RSU	RSU	SU	STU	SU	SU	SU	RSU	SU	
Viewpoint	3941	Unsuitable	+20%	AZ		AZ	AZ	AZ	AZ	AZ	AZ	AZ	AZ	AZ	AZ	AZ	AZ	AZ	AZ	AZ	AZ	AZ	AZ
Vine	3812	Caution	+20%						X				X										
W	3446	Caution	+0%	S		S	S	S		RSU	SU	SU		RSU	RSU	SU	STU	SU	SU	SU	RSU	SU	
Wend	3169	Caution	+0%	S		S	S	S		RSU	SU	SU		RSU	RSU	SU	STU	SU	SU	SU	RSU	SU	
Whim	3691	Approved	+0%	Y		Y	Y	Y	Y	Y	Y	Y	Y	Y	Y	Y	Y	Y	Y	Y	Y	Y	Y
Willis	3892	Unsuitable	+0%	ALZ		ALZ	ALZ	ALZ	ALZ	ALZ	ALZ	ALZ	ALZ	ALZ	ALZ	ALZ	ALZ	ALZ	ALZ	ALZ	ALZ	ALZ	ALZ
Windowpane Crypton	3861	Caution	+0%	S		S	S	S		RSU	SU	SU		RSU	RSU	SU	STU	SU	SU	SU	RSU	SU	
Woolish	3973	Caution	+0%	S		S	S	S		RSU	SU	SU		RSU	RSU	SU	STU	SU	SU	SU	RSU	SU	
Woven Texture	3853	Caution	+10%	S		S	S	S		RSU	SU	SU		RSU	RSU	SU	STU	SU	SU	SU	RSU	SU	



### Grade

Price grades correlate to those listed in the List Price Schedule for products with upholstery materials.

Please contact Customer Service for patterns graded as **Quote**.

### Extra Material Required

Yardage adjustments are required for those patterns less than 54 inches wide and/or having more than a nominal vertical repeat. This percentage amount must be added to the yardage requirement shown in the TUOHY List Prices and Specification Guide. Price grades shown here have already been adjusted as needed.

### Evaluation Codes

- A Seam, needle, top issues
- B Frays, unravels
- C Knit backing required
- D Acrylic backing required
- E Stretchy, wrinkles, puddles
- F Surface, pattern distorts
- G Creases, abrades, durability
- H Humidity
- I No tufting - nap, pattern
- J Glues poorly
- K Very thick
- L Thin, porous
- M Steams poorly
- N Memory weak
- O Color striates
- P No center seam

- R OK Loose seat or back
- S OK Tight seat or back
- T OK Lumbar
- U OK Arm & body
- V OK Center seam
- W OK Tufting
- X OK Gluing
- Y Approved
- Z Unsuitable

### Tuohy Furniture Corporation

42 Saint Albans Place  
Chatfield, Minnesota 55923  
e: info@tuohyfurniture.com  
t: 507.867.4280  
www.tuohyfurniture.com

TUOHY UPHOLSTERY PARTNERSHIPS

**Designtex**

KnollTextiles

Maharam

**Tuohy Furniture Corporation**

42 Saint Albans Place, Chatfield, MN 55923

t 507.867.4280

info@tuohyfurniture.com

www.tuohyfurniture.com

TUOHY



UPHOLSTERY PARTNERSHIPS

**Knoll**Textiles

June 1, 2021

TUOHY





**Evaluation Codes by Product**

Pattern Name	Pattern Number	Evaluation	Grade**	Material Req'd	Backing Req'd	902	Aim	Arcelle	Bau	Bryant Park	Domino	Edo	Fabric Panels	Genevieve	International	International II	Kaesi	Leit	Moderna	Rien	Selone	Vita	
Abacus	K715	Caution	+25%			AB	AB	AB	AB	AB	AB	AB	AB	AB	AB	AB	ABT	AB	AB	AB	AB	AB	AB
Aegean	K20741	Caution	+0%		•	ABCS	ABCS	ABCS	ABC	ABCRSU	ABCSU	ABCSU	ABC	ABCRSU	ABCRSU	ABCSU	ABCSTU	ABCSU	ABCSU	ABCSU	ABCSU	ABCRSU	ABCSU
All Star Luxe	K2209	Caution	+0%			S	S	S		RSU	SU	SU		RSU	RSU	SU	STU	SU	SU	SU	RSU	SU	SU
Alter Ego	K2140	Unsuitable	+0%			ABLZ	ABLZ	ABLZ	ABLZ	ABLZ	ABLZ	ABLZ	ABLZ	ABLZ	ABLZ	ABLZ	ABLZ	ABLZ	ABLZ	ABLZ	ABLZ	ABLZ	ABLZ
Amore Luxe	K2080	Caution	+0%			S	S	S		RSU	SU	SU		RSU	RSU	SU	STU	SU	SU	SU	RSU	SU	SU
Andissa	K2083	Unsuitable	Quote			ABZ	ABZ	ABZ	ABZ	ABZ	ABZ	ABZ	ABZ	ABZ	ABZ	ABZ	ABZ	ABZ	ABZ	ABZ	ABZ	ABZ	ABZ
Arezzo Luxe	K1442	Caution	+0%			S	S	S		RSU	SU	SU		RSU	RSU	SU	STU	SU	SU	SU	RSU	SU	SU
Arrondissement	K2200	Caution	+25%			AS	AS	AS	AX	ARSU	ASU	ASU	AX	ARSU	ARSU	ASU	ASTU	ASU	ASU	ASU	ASU	ARSU	ASU
Aswan	K2046	Caution	0%			S	S	S		RSU	SU	SU		RSU	RSU	SU	STU	SU	SU	SU	RSU	SU	SU
Atelier	K1607	Caution	+0%			S	S	S	X	RSU	SU	SU	X	RSU	RSU	SU	STU	SU	SU	SU	RSU	SU	SU
Atlas	K1236	Caution	+0%			ENS	ENS	ENS	ENX	ENRSU	ENSU	ENSU	ENX	ENRSU	ENRSU	ENSU	ENSTU	ENSU	ENSU	ENSU	ENRSU	ENSU	ENSU
Attire	K2340	Caution	+0%			S	S	S		RSU	SU	SU		RSU	RSU	SU	STU	SU	SU	SU	RSU	SU	SU
Axiom	K1650	Caution	+0%			EFNS	EFNS	EFNS	EFN	EFNRSU	EFNSU	EFNSU	EFN	EFNRSU	EFNRSU	EFNSU	EFNSTU	EFNSU	EFNSU	EFNSU	EFNRSU	EFNRSU	EFNSU
Bavaria Luxe	K1160	Caution	10%		•	ACS	ACS	ACS	AC	ACRSU	ACSU	ACSU	AC	ACRSU	ACRSU	ACSU	ACSTU	ACSU	ACSU	ACSU	ACRSU	ACSU	ACSU
Belize	K1165	Caution	+0%		•	AS	AS	AS	A	ARSU	ASU	ASU	A	ARSU	ARSU	ASU	ASTU	ASU	ASU	ASU	ARSU	ASU	ASU
Bella Luxe	K2336	Caution	+0%			S	S	S		RSU	SU	SU		RSU	RSU	SU	STU	SU	SU	SU	RSU	SU	SU
Biscayne	K1771	Caution	+10%			AEN	AEN	AEN	AENX	AEN	AEN	AEN	AENX	AEN	AEN	AEN	AENT	AEN	AEN	AEN	AEN	AEN	AEN
Bistro	K1775	Caution	+20%		•	ACS	ACS	ACS	AC	ACRSU	ACSU	ACSU	AC	ACRSU	ACRSU	ACSU	ACSTU	ACSU	ACSU	ACSU	ACRSU	ACSU	ACSU
Block Party	WC2335	Caution	+15%			S	S	S		RSU	SU	SU		RSU	RSU	SU	STU	SU	SU	SU	RSU	SU	SU
Bocce	K1255	Unsuitable	+10%			ABZ	ABZ	ABZ	ABZ	ABZ	ABZ	ABZ	ABZ	ABZ	ABZ	ABZ	ABZ	ABZ	ABZ	ABZ	ABZ	ABZ	ABZ
Boundary	K1828	Unsuitable	+0%			ABZ	ABZ	ABZ	ABZ	ABZ	ABZ	ABZ	ABZ	ABZ	ABZ	ABZ	ABZ	ABZ	ABZ	ABZ	ABZ	ABZ	ABZ
Brigadoon	K2167	Caution	+0%			S	S	S		RSU	SU	SU		RSU	RSU	SU	STU	SU	SU	SU	RSU	SU	SU
Buzz	2373	Unsuitable	+0%			HZ	HZ	HZ	HZ	HZ	HZ	HZ	HZ	HZ	HZ	HZ	HZ	HZ	HZ	HZ	HZ	HZ	HZ
Cairo	K2034	Caution	+25%			AS	AS	AS	A	ARSU	ASU	ASU	A	ARSU	ARSU	ASU	ASTU	ASU	ASU	ASU	ARSU	ASU	ASU
Calais Cotton Velvet	K787	Caution	+0%			S	S	S		RSU	SU	SU		RSU	RSU	SU	STU	SU	SU	SU	RSU	SU	SU
Calypso	K2127	Caution	+0%			S	S	S	X	RSU	SU	SU	X	RSU	RSU	SU	STU	SU	SU	SU	RSU	SU	SU
Cameo	K1443	Unsuitable	+0%			AZ	AZ	AZ	AZ	AZ	AZ	AZ	AZ	AZ	AZ	AZ	AZ	AZ	AZ	AZ	AZ	AZ	AZ
Cato	H800	Caution	+0%		•	ACS	ACS	ACS	ACX	ACRSU	ACSU	ACSU	ACX	ACRSU	ACRSU	ACSU	ACSTU	ACSU	ACSU	ACSU	ACRSU	ACSU	ACSU
Catwalk	K2156	Unsuitable	+0%			AZ	AZ	AZ	AZ	AZ	AZ	AZ	AZ	AZ	AZ	AZ	AZ	AZ	AZ	AZ	AZ	AZ	AZ
Chain Link	K2191	Caution	+0%			A	A	A	A	A	A	A	A	A	A	A	AT	A	A	A	A	A	A
Chameleon	K2372	Approved	+0%			Y	Y	Y	Y	Y	Y	Y	Y	Y	Y	Y	Y	Y	Y	Y	Y	Y	Y
Chance	K1552	Caution	+0%			AS	AS	AS	A	ARSU	ASU	ASU	A	ARSU	ARSU	ASU	ASTU	ASU	ASU	ASU	ARSU	ASU	ASU
Charm	K1049	Unsuitable	+0%			AZ	AZ	AZ	AZ	AZ	AZ	AZ	AZ	AZ	AZ	AZ	AZ	AZ	AZ	AZ	AZ	AZ	AZ
Chic Luxe	K2351	Caution	+0%			S	S	S		RSU	SU	SU		RSU	RSU	SU	STU	SU	SU	SU	RSU	SU	SU
Chiseled	K2249	Unsuitable	Quote			FJZ	FJZ	FJZ	FJZ	FJZ	FJZ	FJZ	FJZ	FJZ	FJZ	FJZ	FJZ	FJZ	FJZ	FJZ	FJZ	FJZ	FJZ
Chronicle	K1525	Caution	+10%			A	A	A	A	A	A	A	A	A	A	A	AT	A	A	A	A	A	A
Circa	K1054	Caution	+0%			S	S	S	X	RSU	SU	SU	X	RSU	RSU	SU	STU	SU	SU	SU	RSU	SU	SU
Classic Boucle	K162	Caution	+0%			S	S	S	X	RSU	SU	SU	X	RSU	RSU	SU	STU	SU	SU	SU	RSU	SU	SU
Cleo	K2168	Caution	+15%			A	A	A	A	A	A	A	A	A	A	A	AT	A	A	A	A	A	A
Code	K2251	Caution	+0%			S	S	S		RSU	SU	SU		RSU	RSU	SU	STU	SU	SU	SU	RSU	SU	SU
Color Collage	K2349	Caution	+25%			KS	KS	KS	K	KRSU	KSU	KSU	K	KRSU	KRSU	KSU	KSTU	KSU	KSU	KSU	KRSU	KSU	KSU
Color Field	K2226	Approved	+0%			Y	Y	Y	Y	Y	Y	Y	Y	Y	Y	Y	Y	Y	Y	Y	Y	Y	Y
Commuter Cloth	K1778	Caution	+0%			ABJ	ABJ	ABJ	ABJ	ABJ	ABJ	ABJ	ABJ	ABJ	ABJ	ABJ	ABJT	ABJ	ABJ	ABJ	ABJ	ABJ	ABJ
Constance Luxe	K1527	Caution	+0%			Y	Y	Y	Y	Y	Y	Y	Y	Y	Y	Y	Y	Y	Y	Y	Y	Y	Y
Cozy Cord	K2407	Caution	+0%			S	S	S	X	RSU	SU	SU	X	RSU	RSU	SU	STU	SU	SU	SU	RSU	SU	SU



**Grade**

Price grades correlate to those listed in the List Price Schedule for products with upholstery materials.

Please contact Customer Service for patterns graded as **Quote**.

**Extra Material Required**

Yardage adjustments are required for those patterns less than 54 inches wide and/or having more than a nominal vertical repeat. This percentage amount must be added to the yardage requirement shown in the TUOHY List Prices and Specification Guide. Price grades shown here have already been adjusted as needed.

**Evaluation Codes**

- A Seam, needle, top issues
- B Frays, unravels
- C Knit backing required
- D Acrylic backing required
- E Stretchy, wrinkles, puddles
- F Surface, pattern distorts
- G Creases, abrades, durability
- H Humidity
- I No tufting - nap, pattern
- J Glues poorly
- K Very thick
- L Thin, porous
- M Steams poorly
- N Memory weak
- O Color striates
- P No center seam

- R OK Loose seat or back
- S OK Tight seat or back
- T OK Lumbar
- U OK Arm & body
- V OK Center seam
- W OK Tufting
- X OK Gluing
- Y Approved
- Z Unsuitable

**Tuohy Furniture Corporation**

42 Saint Albans Place  
 Chatfield, Minnesota 55923  
 e: info@tuohyfurniture.com  
 t: 507.867.4280  
 www.tuohyfurniture.com



### Evaluation Codes by Product

Pattern Name	Pattern Number	Evaluation	Grade**	Material Req'd	Backing Req'd	902	Aim	Arcelle	Bau	Bryant Park	Domino	Edo	Fabric Panels	Genevieve	International	International II	Kaesi	Leit	Moderna	Rien	Selone	Vita	
Cris Cross	W305	Unsuitable	+20%			AZ	AZ	AZ	AZ	AZ	AZ	AZ	AZ	AZ	AZ	AZ	AZ	AZ	AZ	AZ	AZ	AZ	
Cross Tech	K2279	Caution	+0%			LS	LS	LS	L	LRSU	LSU	LSU	L	LRSU	LRSU	LSU	LSTU	LSU	LSU	LSU	LSU	LRSU	LSU
Crossroad	K2085	Caution	+0%			LS	LS	LS	LX	LRSU	LSU	LSU	LX	LRSU	LRSU	LSU	LSTU	LSU	LSU	LSU	LRSU	LSU	
Cummings Luxe	K1378	Unsuitable	+25%			AZ	AZ	AZ	AZ	AZ	AZ	AZ	AZ	AZ	AZ	AZ	AZ	AZ	AZ	AZ	AZ	AZ	AZ
Dapper	K2338	Caution	+0%			BCS	BCS	BCS	BCX	BCRSU	BCSU	BCSU	BCX	BCRSU	BCRSU	BCSU	BCSTU	BCSU	BCSU	BCSU	BCRSU	BCRSU	BCSU
Day Tripper	K2248	Caution	+0%			S	S	S		RSU	SU	SU		RSU	RSU	SU	STU	SU	SU	SU	RSU	SU	
Delite	K2026	Caution	+0%			BZ	BZ	BZ	BZ	BZ	BZ	BZ	BZ	BZ	BZ	BZ	BT	BZ	BZ	BZ	BZ	BZ	BZ
Demure Luxe	K2023	Unsuitable	+0%			AJLZ	AJLZ	AJLZ	AJLZ	AJLZ	AJLZ	AJLZ	AJLZ	AJLZ	AJLZ	AJLZ	AJLZ	AJLZ	AJLZ	AJLZ	AJLZ	AJLZ	AJLZ
Diamond Days Luxe	K1756	Caution	+25%			BS	BS	BS	B	BRSU	BSU	BSU	B	BRSU	BRSU	BSU	BSTU	BSU	BSU	BSU	BRSU	BSU	
Digi Velvet Luxe	K1969	Caution	20%			AKS	AKS	AKS	AK	AKRSU	AKSU	AKSU	AK	AKRSU	AKRSU	AKSU	AKSTU	AKSU	AKSU	AKSU	AKRSU	AKSU	
Digital Ikat	WC2417	Unsuitable	Quote			KZ	KZ	KZ	KZ	KZ	KZ	KZ	KZ	KZ	KZ	KZ	KZ	KZ	KZ	KZ	KZ	KZ	KZ
Diva	K2051	Caution	+0%			S	S	S	X	RSU	SU	SU	X	RSU	RSU	SU	STU	SU	SU	SU	RSU	SU	
Djenne	K2029	Caution	+10%			S	S	S		RSU	SU	SU		RSU	RSU	SU	STU	SU	SU	SU	RSU	SU	
Dottie	K2259	Caution	+0%			AS	AS	AS	AX	ARSU	ASU	ASU	AX	ARSU	ARSU	ASU	ASTU	ASU	ASU	ASU	ARSU	ASU	
Double Agent	K2199	Caution	Quote			S	S	S		RSU	SU	SU		RSU	RSU	SU	STU	SU	SU	SU	RSU	SU	
Doyenne Luxe	K2353	Unsuitable	+0%			AZ	AZ	AZ	AZ	AZ	AZ	AZ	AZ	AZ	AZ	AZ	AZ	AZ	AZ	AZ	AZ	AZ	AZ
Dune	K2047	Caution	+0%			AS	AS	AS	A	ARSU	ASU	ASU	A	ARSU	ARSU	ASU	ASTU	ASU	ASU	ASU	ARSU	ASU	
Durand	K1885	Caution	+10%			A	A	A	AX	A	A	A	AX	A	A	A	AT	A	A	A	A	A	A
Dynamic	K1617	Unsuitable	+0%			AZ	AZ	AZ	AZ	AZ	AZ	AZ	AZ	AZ	AZ	AZ	AZ	AZ	AZ	AZ	AZ	AZ	AZ
Eclat Weave	K1104	Caution	+15%			AB	AB	AB	AB	AB	AB	AB	AB	AB	AB	AB	ABT	AB	AB	AB	AB	AB	AB
Entwine	K2355	Caution	+0%			S	S	S		RSU	SU	SU		RSU	RSU	SU	STU	SU	SU	SU	RSU	SU	
Essence	K205	Caution	10%			A	A	A	A	A	A	A	A	A	A	A	AT	A	A	A	A	A	A
Fancy Twill	K2348	Caution	+0%			AS	AS	AS	A	ARSU	ASU	ASU	A	ARSU	ARSU	ASU	ASTU	ASU	ASU	ASU	ARSU	ASU	
Feeling Plaid	K2150	Unsuitable	+0%			ACZ	ACZ	ACZ	ACZ	ACZ	ACZ	ACZ	ACZ	ACZ	ACZ	ACZ	ACZ	ACZ	ACZ	ACZ	ACZ	ACZ	ACZ
Ferry	K1697	Caution	+0%			S	S	S	X	RSU	SU	SU	X	RSU	RSU	SU	STU	SU	SU	SU	RSU	SU	
Firefly	K2021	Caution	+10%			S	S	S		RSU	SU	SU		RSU	RSU	SU	STU	SU	SU	SU	RSU	SU	
Floressence	K2357	Caution	Quote			S	S	S		RSU	SU	SU		RSU	RSU	SU	STU	SU	SU	SU	RSU	SU	
Flower Power	K2418	Caution	Quote			S	S	S		RSU	SU	SU		RSU	RSU	SU	STU	SU	SU	SU	RSU	SU	
Gala II	K1520	Caution	+10%			AB	AB	AB	AB	AB	AB	AB	AB	AB	AB	AB	ABT	AB	AB	AB	AB	AB	AB
Gibson	K1086	Caution	+10%			S	S	S		RSU	SU	SU		RSU	RSU	SU	STU	SU	SU	SU	RSU	SU	
Glider	K1717	Caution	+20%			S	S	S		RSU	SU	SU		RSU	RSU	SU	STU	SU	SU	SU	RSU	SU	
Greenwich	K1753	Unsuitable	+20%			AHZ	AHZ	AHZ	AHZ	AHZ	AHZ	AHZ	AHZ	AHZ	AHZ	AHZ	AHZ	AHZ	AHZ	AHZ	AHZ	AHZ	AHZ
Groovy	K2242	Caution	+0%			S	S	S		RSU	SU	SU		RSU	RSU	SU	STU	SU	SU	SU	RSU	SU	
Hastings Luxe	K109	Caution	+0%			AS	AS	AS	AX	ARSU	ASU	ASU	AX	ARSU	ARSU	ASU	ASTU	ASU	ASU	ASU	ARSU	ASU	
Haze	K109	Caution	+0%			S	S	S		RSU	SU	SU		RSU	RSU	SU	STU	SU	SU	SU	RSU	SU	
Helios	K2089	Caution	+0%			S	S	S		RSU	SU	SU		RSU	RSU	SU	STU	SU	SU	SU	RSU	SU	
Highland	K2010	Caution	+0%			S	S	S		RSU	SU	SU		RSU	RSU	SU	STU	SU	SU	SU	RSU	SU	
Holbrook	K1928	Caution	+15%			AJS	AJS	AJS	AJ	AJRSU	AJSU	AJSU	AJ	AJRSU	AJRSU	AJSU	AJSTU	AJSU	AJSU	AJSU	AJRSU	AJSU	
Hourglass	K1523	Caution	+0%			AL	AL	AL	ALX	AL	AL	AL	ALX	AL	AL	AL	ALT	AL	AL	AL	AL	AL	AL
Hudson	K1765	Caution	+15%			A	A	A	A	A	A	A	A	A	A	A	AT	A	A	A	A	A	A
Ikat Square	K1703	Caution	+20%			AB	AB	AB	AB	AB	AB	AB	AB	AB	AB	AB	ABT	AB	AB	AB	AB	AB	AB
Ikat Stripe	K1701	Unsuitable	+20%			AZ	AZ	AZ	AZ	AZ	AZ	AZ	AZ	AZ	AZ	AZ	AZ	AZ	AZ	AZ	AZ	AZ	AZ
Imprint	K2333	Caution	+25%			S	S	S		RSU	SU	SU		RSU	RSU	SU	STU	SU	SU	SU	RSU	SU	
In Step	K2375	Caution	+15%			S	S	S		RSU	SU	SU		RSU	RSU	SU	STU	SU	SU	SU	RSU	SU	
In Stitches	K2190	Caution	+0%			S	S	S	X	RSU	SU	SU	X	RSU	RSU	SU	STU	SU	SU	SU	RSU	SU	



#### Grade

Price grades correlate to those listed in the List Price Schedule for products with upholstery materials.

Please contact Customer Service for patterns graded as **Quote**.

#### Extra Material Required

Yardage adjustments are required for those patterns less than 54 inches wide and/or having more than a nominal vertical repeat. This percentage amount must be added to the yardage requirement shown in the TUOHY List Prices and Specification Guide. Price grades shown here have already been adjusted as needed.

#### Evaluation Codes

- A Seam, needle, top issues
- B Frays, unravels
- C Knit backing required
- D Acrylic backing required
- E Stretchy, wrinkles, puddles
- F Surface, pattern distorts
- G Creases, abrades, durability
- H Humidity
- I No tufting - nap, pattern
- J Glues poorly
- K Very thick
- L Thin, porous
- M Steams poorly
- N Memory weak
- O Color striates
- P No center seam

- R OK Loose seat or back
- S OK Tight seat or back
- T OK Lumbar
- U OK Arm & body
- V OK Center seam
- W OK Tufting
- X OK Gluing
- Y Approved
- Z Unsuitable

#### Tuohy Furniture Corporation

42 Saint Albans Place  
 Chatfield, Minnesota 55923  
 e: info@tuohyfurniture.com  
 t: 507.867.4280  
 www.tuohyfurniture.com

**Evaluation Codes by Product**

Pattern Name	Pattern Number	Evaluation	Grade**	Material Req'd	Backing Req'd	902	Aim	Arcelle	Bau	Bryant Park	Domino	Edo	Fabric Panels	Genevieve	International	International II	Kaesi	Leit	Moderna	Rien	Selone	Vita
Infinite	K2263	Caution	+0%	S		S	S	S	X	RSU	SU	SU	X	RSU	RSU	SU	STU	SU	SU	SU	RSU	SU
Instinct	K2258	Caution	+0%	S		S	S	S		RSU	SU	SU		RSU	RSU	SU	STU	SU	SU	SU	RSU	SU
Island	K20532	Caution	+10%	S		S	S	S		RSU	SU	SU		RSU	RSU	SU	STU	SU	SU	SU	RSU	SU
Ita Luxe	K1930	Unsuitable	+0%	BKZ		BKZ	BKZ	BKZ	BKZ	BKZ	BKZ	BKZ	BKZ	BKZ	BKZ	BKZ	BKZ	BKZ	BKZ	BKZ	BKZ	BKZ
It's Complicated	K2252	Caution	+25%	S		S	S	S		RSU	SU	SU		RSU	RSU	SU	STU	SU	SU	SU	RSU	SU
Jasmine Luxe	K2077	Caution	+15%	A		A	A	A	A	A	A	A	A	A	A	A	AT	A	A	A	A	A
Journey	K1806	Caution	+0%	BCS		BCS	BCS	BCS	BCX	BCRSU	BCSU	BCSU	BCX	BCRSU	BCRSU	BCSU	BCSTU	BCSU	BCSU	BCSU	BCRSU	BCSU
Juno	K2152	Unsuitable	+0%	AZ		AZ	AZ	AZ	AZ	AZ	AZ	AZ	AZ	AZ	AZ	AZ	AZ	AZ	AZ	AZ	AZ	AZ
Kabuki	K2084	Unsuitable	+15%	HZ		HZ	HZ	HZ	HZ	HZ	HZ	HZ	HZ	HZ	HZ	HZ	HZ	HZ	HZ	HZ	HZ	HZ
Kamani Luxe	K1580	Unsuitable	+25%	AZ		AZ	AZ	AZ	AZ	AZ	AZ	AZ	AZ	AZ	AZ	AZ	AZ	AZ	AZ	AZ	AZ	AZ
Kampala	K2032	Caution	+0%	AS		AS	AS	AS	A	ARSU	ASU	ASU	A	ARSU	ARSU	ASU	ASTU	ASU	ASU	ASU	ARSU	ASU
Katazome	K1459	Caution	+10%	S		S	S	S		RSU	SU	SU		RSU	RSU	SU	STU	SU	SU	SU	RSU	SU
Kaya	K2122	Caution	+0%	AS		AS	AS	AS	A	ARSU	ASU	ASU	A	ARSU	ARSU	ASU	ASTU	ASU	ASU	ASU	ARSU	ASU
Keaton	K1598	Caution	+0%	S		S	S	S	X	RSU	SU	SU	X	RSU	RSU	SU	STU	SU	SU	SU	RSU	SU
Kimono	K1174	Caution	+25%	A		A	A	A	A	A	A	A	A	A	A	A	AT	A	A	A	A	A
Knoll Felt	K1207	Caution	+0%	S		S	S	S	X	RSU	SU	SU	X	RSU	RSU	SU	STU	SU	SU	SU	RSU	SU
Knoll Hopsack	K1206	Caution	+0%	S		S	S	S	X	RSU	SU	SU	X	RSU	RSU	SU	STU	SU	SU	SU	RSU	SU
Knoll Velvet	K784	Caution	+0%	S		S	S	S		RSU	SU	SU		RSU	RSU	SU	STU	SU	SU	SU	RSU	SU
Lagos	K2028	Unsuitable	+25%	HZ		HZ	HZ	HZ	HZ	HZ	HZ	HZ	HZ	HZ	HZ	HZ	HZ	HZ	HZ	HZ	HZ	HZ
Liberty	K1888	Unsuitable	+0%	AZ		AZ	AZ	AZ	AZ	AZ	AZ	AZ	AZ	AZ	AZ	AZ	AZ	AZ	AZ	AZ	AZ	AZ
Limani	K2079	Caution	+0%	S		S	S	S	X	RSU	SU	SU	X	RSU	RSU	SU	STU	SU	SU	SU	RSU	SU
Little Devil	K2112	Caution	+0%	S		S	S	S	X	RSU	SU	SU	X	RSU	RSU	SU	STU	SU	SU	SU	RSU	SU
Looped In	K2390	Caution	+0%	S		S	S	S	X	RSU	SU	SU	X	RSU	RSU	SU	STU	SU	SU	SU	RSU	SU
Lore CR	HC1123	Caution	+0%	AS		AS	AS	AS	AX	ARSU	ASU	ASU	AX	ARSU	ARSU	ASU	ASTU	ASU	ASU	ASU	ARSU	ASU
Ludlow	K1998	Caution	+0%	AJ		AJ	AJ	AJ	AJ	AJ	AJ	AJ	AJ	AJ	AJ	AJ	AJT	AJ	AJ	AJ	AJ	AJ
Magnolia	K1999	Caution	Quote	A		A	A	A	A	A	A	A	A	A	A	A	AT	A	A	A	A	A
Masquerade	K806	Caution	+10%	HS		HS	HS	HS	H	HRSU	HSU	HSU	H	HRSU	HRSU	HSU	HSTU	HSU	HSU	HSU	HRSU	HSU
Melange	K1882	Caution	+0%	AS		AS	AS	AS	AX	ARSU	ASU	ASU	AX	ARSU	ARSU	ASU	ASTU	ASU	ASU	ASU	ARSU	ASU
Melody	K2067	Caution	+25%	S		S	S	S		RSU	SU	SU		RSU	RSU	SU	STU	SU	SU	SU	RSU	SU
Menagerie	K1322	Caution	+10%	FJS		FJS	FJS	FJS	FJ	FJRSU	FJSU	FJSU	FJ	FJRSU	FJRSU	FJSU	FJSTU	FJSU	FJSU	FJSU	FJRSU	FJSU
Meroe	K2043	Unsuitable	+10%	HZ		HZ	HZ	HZ	HZ	HZ	HZ	HZ	HZ	HZ	HZ	HZ	HZ	HZ	HZ	HZ	HZ	HZ
Midpoint	K2123	Unsuitable	+25%	HZ		HZ	HZ	HZ	HZ	HZ	HZ	HZ	HZ	HZ	HZ	HZ	HZ	HZ	HZ	HZ	HZ	HZ
Milestone	K1886	Caution	+0%	AS		AS	AS	AS	A	ARSU	ASU	ASU	A	ARSU	ARSU	ASU	ASTU	ASU	ASU	ASU	ARSU	ASU
Mini Stitch	K1130	Caution	+10%	B		B	B	B	B	B	B	B	B	B	B	B	BT	B	B	B	B	B
Mod Plaid	K1630	Caution	+10%	A		A	A	A	A	A	A	A	A	A	A	A	AT	A	A	A	A	A
Modern Tweed	K2155	Caution	+0%	S		S	S	S		RSU	SU	SU		RSU	RSU	SU	STU	SU	SU	SU	RSU	SU
Monarch	K1149	Caution	+0%	ABC		ABC	ABC	ABC	ABCX	ABC	ABC	ABC	ABCX	ABC	ABC	ABC	ABCT	ABC	ABC	ABC	ABC	ABC
Nature Walk	K2081	Caution	+20%	AS		AS	AS	AS	AX	ARSU	ASU	ASU	AX	ARSU	ARSU	ASU	ASTU	ASU	ASU	ASU	ARSU	ASU
North Island Luxe	K1159	Approved	+0%	Y		Y	Y	Y	Y	Y	Y	Y	Y	Y	Y	Y	Y	Y	Y	Y	Y	Y
Oh La La	K2201	Caution	+0%	S		S	S	S	X	RSU	SU	SU	X	RSU	RSU	SU	STU	SU	SU	SU	RSU	SU
On Point	K2293	Unsuitable	+0%	HZ		HZ	HZ	HZ	HZ	HZ	HZ	HZ	HZ	HZ	HZ	HZ	HZ	HZ	HZ	HZ	HZ	HZ
Origins	K1700	Approved	+20%	Y		Y	Y	Y	Y	Y	Y	Y	Y	Y	Y	Y	Y	Y	Y	Y	Y	Y
Overture	K2169	Approved	+0%	Y		Y	Y	Y	Y	Y	Y	Y	Y	Y	Y	Y	Y	Y	Y	Y	Y	Y
Palisade	K2030	Caution	+0%	S		S	S	S		RSU	SU	SU		RSU	RSU	SU	STU	SU	SU	SU	RSU	SU
Paradigm	K1101	Caution	+15%	S		S	S	S		RSU	SU	SU		RSU	RSU	SU	STU	SU	SU	SU	RSU	SU



**Grade**

Price grades correlate to those listed in the List Price Schedule for products with upholstery materials.

Please contact Customer Service for patterns graded as **Quote**.

**Extra Material Required**

Yardage adjustments are required for those patterns less than 54 inches wide and/or having more than a nominal vertical repeat. This percentage amount must be added to the yardage requirement shown in the TUOHY List Prices and Specification Guide. Price grades shown here have already been adjusted as needed.

**Evaluation Codes**

- A Seam, needle, top issues
- B Frays, unravels
- C Knit backing required
- D Acrylic backing required
- E Stretchy, wrinkles, puddles
- F Surface, pattern distorts
- G Creases, abrades, durability
- H Humidity
- I No tufting - nap, pattern
- J Glues poorly
- K Very thick
- L Thin, porous
- M Steams poorly
- N Memory weak
- O Color striates
- P No center seam

- R OK Loose seat or back
- S OK Tight seat or back
- T OK Lumbar
- U OK Arm & body
- V OK Center seam
- W OK Tufting
- X OK Gluing
- Y Approved
- Z Unsuitable

**Tuohy Furniture Corporation**

42 Saint Albans Place  
 Chatfield, Minnesota 55923  
 e: info@tuohyfurniture.com  
 t: 507.867.4280  
 www.tuohyfurniture.com



**Evaluation Codes by Product**

Pattern Name	Pattern Number	Evaluation	Grade**	Material Req'd	Backing Req'd	902	Aim	Arcelle	Bau	Bryant Park	Domino	Edo	Fabric Panels	Genevieve	International	International II	Kaesi	Leit	Moderna	Rien	Selone	Vita	
Patchwork	K2292	Unsuitable	+0%			HZ	HZ	HZ	HZ	HZ	HZ	HZ	HZ	HZ	HZ	HZ	HZ	HZ	HZ	HZ	HZ	HZ	HZ
Petal Pusher	K1968	Approved	15%			Y	Y	Y	Y	Y	Y	Y	Y	Y	Y	Y	Y	Y	Y	Y	Y	Y	Y
Petite Floral Luxe	K2087	Unsuitable	+10%			AZ	AZ	AZ	AZ	AZ	AZ	AZ	AZ	AZ	AZ	AZ	AZ	AZ	AZ	AZ	AZ	AZ	AZ
Piper Luxe	K1706	Caution	+10%			AS	AS	AS	A	ARSU	ASU	ASU	A	ARSU	ARSU	ASU	ASTU	ASU	ASU	ASU	ARSU	ASU	ASU
Pivot	W1926	Unsuitable	+0%			EGNZ	EGNZ	EGNZ	EGNZ	EGNZ	EGNZ	EGNZ	EGNZ	EGNZ	EGNZ	EGNZ	EGNZ	EGNZ	EGNZ	EGNZ	EGNZ	EGNZ	EGNZ
Plaid On	K2420	Caution	+0%			S	S	S		RSU	SU	SU		RSU	RSU	SU	STU	SU	SU	RSU	SU	RSU	SU
Plaidtastic	K2238	Caution	Quote			NS	NS	NS	N	NRSU	NSU	NSU	N	NRSU	NRSU	NSU	NSTU	NSU	NSU	NSU	NRSU	NSU	NSU
Prairie	K1925	Caution	+0%			ENS	ENS	ENS	ENX	ENRSU	ENSU	ENSU	ENX	ENRSU	ENRSU	ENSU	ENSTU	ENSU	ENSU	ENSU	ENRSU	ENSU	ENSU
Premier Silicone	K2294	Approved	+0%			Y	Y	Y	Y	Y	Y	Y	Y	Y	Y	Y	Y	Y	Y	Y	Y	Y	Y
Prep	K1076	Caution	+0%			AS	AS	AS	A	ARSU	ASU	ASU	A	ARSU	ARSU	ASU	ASTU	ASU	ASU	ASU	ARSU	ASU	ASU
Prim	K1884	Caution	+10%			S	S	S		RSU	SU	SU		RSU	RSU	SU	STU	SU	SU	SU	RSU	SU	SU
Prince Hairy Luxe	K2237	Caution	+10%			S	S	S	X	RSU	SU	SU	X	RSU	RSU	SU	STU	SU	SU	SU	RSU	SU	SU
Pullman	K21245	Caution	+0%			S	S	S	X	RSU	SU	SU	X	RSU	RSU	SU	STU	SU	SU	SU	RSU	SU	SU
Quark	K781	Caution	+10%			AS	AS	AS	A	ARSU	ASU	ASU	A	ARSU	ARSU	ASU	ASTU	ASU	ASU	ASU	ARSU	ASU	ASU
Rebel	K2261	Caution	+0%			BS	BS	BS	BX	BRSU	BSU	BSU	BX	BRSU	BRSU	BSU	BSTU	BSU	BSU	BSU	BRSU	BSU	BSU
Retreat	K236	Unsuitable	+25%			HZ	HZ	HZ	HZ	HZ	HZ	HZ	HZ	HZ	HZ	HZ	HZ	HZ	HZ	HZ	HZ	HZ	HZ
Rivington	K1080	Caution	+0%			S	S	S	X	RSU	SU	SU	X	RSU	RSU	SU	STU	SU	SU	SU	RSU	SU	SU
Roam	K1657	Caution	+0%			S	S	S	X	RSU	SU	SU	X	RSU	RSU	SU	STU	SU	SU	SU	RSU	SU	SU
Rush Hour	K1824	Caution	+0%			B	B	B	B	B	B	B	B	B	B	B	BT	B	B	B	B	B	B
Rutledge Luxe	K1707	Caution	+25%			S	S	S		RSU	SU	SU		RSU	RSU	SU	STU	SU	SU	SU	RSU	SU	SU
Sahara	HC1269	Unsuitable	+0%			ABZ	ABZ	ABZ	ABZ	ABZ	ABZ	ABZ	ABZ	ABZ	ABZ	ABZ	ABZ	ABZ	ABZ	ABZ	ABZ	ABZ	ABZ
Sashiko	K2121	Caution	+25%			S	S	S	X	RSU	SU	SU	X	RSU	RSU	SU	STU	SU	SU	SU	RSU	SU	SU
Seurat	K2151	Caution	+0%			B	B	B	BX	B	B	B	BX	B	B	B	BT	B	B	B	B	B	B
Sherman	K1789	Caution	+20%			B	B	B	B	B	B	B	B	B	B	B	BT	B	B	B	B	B	B
Shima	K1468	Caution	+25%			BG	BG	BG	BG	BG	BG	BG	BG	BG	BG	BG	BGT	BG	BG	BG	BG	BG	BG
Sideline	K2210	Unsuitable	+25%			HZ	HZ	HZ	HZ	HZ	HZ	HZ	HZ	HZ	HZ	HZ	HZ	HZ	HZ	HZ	HZ	HZ	HZ
Sinclair	K1555	Caution	+10%			B	B	B	B	B	B	B	B	B	B	B	BT	B	B	B	B	B	B
Smart	K1268	Caution	+0%			ENS	ENS	ENS	ENX	ENSU	ENSU	ENSU	ENX	ENSU	ENSU	ENSU	ENSTU	ENSU	ENSU	ENSU	ENSU	ENSU	ENSU
Soliloquy	K1458	Unsuitable	+0%			BLZ	BLZ	BLZ	BLZ	BLZ	BLZ	BLZ	BLZ	BLZ	BLZ	BLZ	BLZ	BLZ	BLZ	BLZ	BLZ	BLZ	BLZ
Sonnet	K1460	Caution	+0%			ACS	ACS	ACS	AC	ACRSU	ACSU	ACSU	AC	ACRSU	ACRSU	ACSU	ACSTU	ACSU	ACSU	ACSU	ACRSU	ACSU	ACSU
Spencer	K1106	Caution	+0%			S	S	S		RSU	SU	SU		RSU	RSU	SU	STU	SU	SU	SU	RSU	SU	SU
Spot On	K1324	Caution	+15%			AB	AB	AB	AB	AB	AB	AB	AB	AB	AB	AB	ABT	AB	AB	AB	AB	AB	AB
Spree	K1600	Unsuitable	+10%			ADZ	ADZ	ADZ	ADZ	ADZ	ADZ	ADZ	ADZ	ADZ	ADZ	ADZ	ADZ	ADZ	ADZ	ADZ	ADZ	ADZ	ADZ
Stepping Stones	K346	Caution	+10%			A	A	A	A	A	A	A	A	A	A	A	AT	A	A	A	A	A	A
Stretch Appeal	K2188	Caution	+15%			BCS	BCS	BCS	BCX	BCRSU	BCSU	BCSU	BCX	BCRSU	BCRSU	BCSU	BCSTU	BCSU	BCSU	BCSU	BCRSU	BCSU	BCSU
Striae Stripe	K1827	Caution	+15%			B	B	B	BX	B	B	B	BX	B	B	B	BT	B	B	B	B	B	B
Stripe It	K2368	Caution	+25%			S	S	S		RSU	SU	SU		RSU	RSU	SU	STU	SU	SU	SU	RSU	SU	SU
Stripmania	K2225	Unsuitable	+10%			AZ	AZ	AZ	AZ	AZ	AZ	AZ	AZ	AZ	AZ	AZ	AZ	AZ	AZ	AZ	AZ	AZ	AZ
Summit	K2020	Caution	+0%			S	S	S	X	RSU	SU	SU	X	RSU	RSU	SU	STU	SU	SU	SU	RSU	SU	SU
Sutton	K1750	Unsuitable	+0%			DZ	DZ	DZ	DZ	DZ	DZ	DZ	DZ	DZ	DZ	DZ	DZ	DZ	DZ	DZ	DZ	DZ	DZ
Swank Luxe	K2221	Unsuitable	+0%			ALZ	ALZ	ALZ	ALZ	ALZ	ALZ	ALZ	ALZ	ALZ	ALZ	ALZ	ALZ	ALZ	ALZ	ALZ	ALZ	ALZ	ALZ
Swing	K479	Approved	+0%			Y	Y	Y	Y	Y	Y	Y	Y	Y	Y	Y	Y	Y	Y	Y	Y	Y	Y
Synth	K1693	Caution	+0%			BS	BS	BS	BX	BRSU	BSU	BSU	BX	BRSU	BRSU	BSU	BSTU	BSU	BSU	BSU	BRSU	BSU	BSU
Tabloid	K2022	Caution	+25%			S	S	S		RSU	SU	SU		RSU	RSU	SU	STU	SU	SU	SU	RSU	SU	SU
Tempest	K2377	Caution	+0%			S	S	S		RSU	SU	SU		RSU	RSU	SU	STU	SU	SU	SU	RSU	SU	SU



**Grade**

Price grades correlate to those listed in the List Price Schedule for products with upholstery materials.

Please contact Customer Service for patterns graded as **Quote**.

**Extra Material Required**

Yardage adjustments are required for those patterns less than 54 inches wide and/or having more than a nominal vertical repeat. This percentage amount must be added to the yardage requirement shown in the TUOHY List Prices and Specification Guide. Price grades shown here have already been adjusted as needed.

**Evaluation Codes**

- A Seam, needle, top issues
- B Frays, unravels
- C Knit backing required
- D Acrylic backing required
- E Stretchy, wrinkles, puddles
- F Surface, pattern distorts
- G Creases, abrades, durability
- H Humidity
- I No tufting - nap, pattern
- J Glues poorly
- K Very thick
- L Thin, porous
- M Steams poorly
- N Memory weak
- O Color striates
- P No center seam

- R OK Loose seat or back
- S OK Tight seat or back
- T OK Lumbar
- U OK Arm & body
- V OK Center seam
- W OK Tufting
- X OK Gluing
- Y Approved
- Z Unsuitable

**Tuohy Furniture Corporation**

42 Saint Albans Place  
 Chatfield, Minnesota 55923  
 e: info@tuohyfurniture.com  
 t: 507.867.4280  
 www.tuohyfurniture.com

**\*\*Grading Note:** Due to the current volatility of fabric pricing, we will no longer be listing grades on our website. Please see your customer service representative for current graded price.



When backing is required, the surcharge will be \$341 List for 5 – 22 yds; over 22 yds is \$15.50 List per yd. Add 1 week to lead time.

**Evaluation Codes by Product**

February 1, 2020

Pattern Name	Pattern Number	Evaluation	Grade**	Material Req'd	Backing Req'd	902	Aim	Arcelle	Bau	Bryant Park	Domino	Edo	Fabric Panels	Genevieve	International	International II	Kaesi	Leit	Moderna	Ren	Selone	Vita
Tight Rope	K1798	Caution	+10%			S	S	S		RSU	SU	SU		RSU	RSU	SU	STU	SU	SU	SU	RSU	SU
Tinge	K2068	Caution	+0%			S	S	S		RSU	SU	SU		RSU	RSU	SU	STU	SU	SU	SU	RSU	SU
Tivoli Luxe	K2063	Caution	+0%			GS	GS	GS	GX	GRSU	GSU	GSU	GX	GRSU	GRSU	GSU	GSTU	GSU	GSU	GSU	GRSU	GSU
Topos	K2397	Approved	+0%			Y	Y	Y	Y	Y	Y	Y	Y	Y	Y	Y	Y	Y	Y	Y	Y	Y
Totem	K1561	Caution	+0%			FS	FS	FS	FX	FRSU	FSU	FSU	FX	FRSU	FRSU	FSU	FSTU	FSU	FSU	FSU	FRSU	FSU
Trophy	K1709	Caution	+0%			S	S	S		RSU	SU	SU		RSU	RSU	SU	STU	SU	SU	SU	RSU	SU
Tryst	K1522	Unsuitable	+0%			AZ	AZ	AZ	AZ	AZ	AZ	AZ	AZ	AZ	AZ	AZ	AZ	AZ	AZ	AZ	AZ	AZ
Twist Tie	K2264	Caution	Quote			JS	JS	JS	J	JRSU	JSU	JSU	J	JRSU	JRSU	JSU	JSTU	JSU	JSU	JSU	JRSU	JSU
Ultrasuede	K1021	Approved	+0%			Y	Y	Y	Y	Y	Y	Y	Y	Y	Y	Y	Y	Y	Y	Y	Y	Y
Uni-Form	K2125	Caution	+0%		•	BCS	BCS	BCS	BCX	BCRSU	BCSU	BCSU	BCX	BCRSU	BCRSU	BCSU	BCSTU	BCSU	BCSU	BCSU	BCRSU	BCSU
Utmost II	K2358	Caution	+0%			S	S	S		RSU	SU	SU		RSU	RSU	SU	STU	SU	SU	SU	RSU	SU
Utopia	K2371	Caution	+0%			S	S	S		RSU	SU	SU		RSU	RSU	SU	STU	SU	SU	SU	RSU	SU
Utrillo	K1807	Unsuitable	+0%			ANZ	ANZ	ANZ	ANZ	ANZ	ANZ	ANZ	ANZ	ANZ	ANZ	ANZ	ANZ	ANZ	ANZ	ANZ	ANZ	ANZ
Vatera	K2071	Caution	+25%			A	A	A	A	AR	A	A	A	AR	AR	A	AT	A	A	A	AR	A
Venue	K1558	Approved	+0%			Y	Y	Y	Y	Y	Y	Y	Y	Y	Y	Y	Y	Y	Y	Y	Y	Y
Versa	K1698	Caution	+20%		•	ADS	ADS	ADS	AD	ADRSU	ADSU	ADSU	AD	ADRSU	ADRSU	ADSU	ADSTU	ADSU	ADSU	ADSU	ADRSU	ADSU
Vertical Velvet	D2415	Unsuitable	+0%			AZ	AZ	AZ	AZ	AZ	AZ	AZ	AZ	AZ	AZ	AZ	AZ	AZ	AZ	AZ	AZ	AZ
Vice Versa	K2361	Unsuitable	+0%			HZ	HZ	HZ	HZ	HZ	HZ	HZ	HZ	HZ	HZ	HZ	HZ	HZ	HZ	HZ	HZ	HZ
Viewpoint - Kt Wall	WC2416	Unsuitable	+0%			ABZ	ABZ	ABZ	ABZ	ABZ	ABZ	ABZ	ABZ	ABZ	ABZ	ABZ	ABZ	ABZ	ABZ	ABZ	ABZ	ABZ
Vinyl	K242	Caution	+0%			S	S	S		RSU	SU	SU		RSU	RSU	SU	STU	SU	SU	SU	RSU	SU
Westwood	K1949	Caution	+0%			Y	Y	Y	Y	Y	Y	Y	Y	Y	Y	Y	Y	Y	Y	Y	Y	Y
Whip	K1386	Approved	+0%			Y	Y	Y	Y	Y	Y	Y	Y	Y	Y	Y	Y	Y	Y	Y	Y	Y
Wild Thing	K2240	Unsuitable	10%			AZ	AZ	AZ	AZ	AZ	AZ	AZ	AZ	AZ	AZ	AZ	AZ	AZ	AZ	AZ	AZ	AZ
Wit	K2050	Unsuitable	+15%			HZ	HZ	HZ	HZ	HZ	HZ	HZ	HZ	HZ	HZ	HZ	HZ	HZ	HZ	HZ	HZ	HZ
Woodland I	K2049	Unsuitable	+0%			AHZ	AHZ	AHZ	AHZ	AHZ	AHZ	AHZ	AHZ	AHZ	AHZ	AHZ	AHZ	AHZ	AHZ	AHZ	AHZ	AHZ
Woodland II	K2401	Caution	+0%			S	S	S	X	RSU	SU	SU	X	RSU	RSU	SU	STU	SU	SU	SU	RSU	SU
World Piece Luxe	K2208	Unsuitable	Quote			Z	Z	Z	Z	Z	Z	Z	Z	Z	Z	Z	Z	Z	Z	Z	Z	Z
Wow Factor	K2362	Approved	+0%			Y	Y	Y	Y	Y	Y	Y	Y	Y	Y	Y	Y	Y	Y	Y	Y	Y
Wrap Up	K2410	Caution	+0%		•	CS	CS	CS	C	CRSU	CSU	CSU	C	CRSU	CRSU	CSU	CSTU	CSU	CSU	CSU	CRSU	CSU
Yeni	K 2082	Unsuitable	+0%			EHNZ	EHNZ	EHNZ	EHNZ	EHNZ	EHNZ	EHNZ	EHNZ	EHNZ	EHNZ	EHNZ	EHNZ	EHNZ	EHNZ	EHNZ	EHNZ	EHNZ
Zari Cr	HC1008	Caution	+20%			S	S	S		RSU	SU	SU		RSU	RSU	SU	STU	SU	SU	SU	RSU	SU
Zen Wave	K2078	Unsuitable	+20%			HZ	HZ	HZ	HZ	HZ	HZ	HZ	HZ	HZ	HZ	HZ	HZ	HZ	HZ	HZ	HZ	HZ



**Grade**

Price grades correlate to those listed in the List Price Schedule for products with upholstery materials.

Please contact Customer Service for patterns graded as **Quote**.

**Extra Material Required**

Yardage adjustments are required for those patterns less than 54 inches wide and/or having more than a nominal vertical repeat. This percentage amount must be added to the yardage requirement shown in the TUOHY List Prices and Specification Guide. Price grades shown here have already been adjusted as needed.

**Evaluation Codes**

- A Seam, needle, top issues
- B Frays, unravels
- C Knit backing required
- D Acrylic backing required
- E Stretchy, wrinkles, puddles
- F Surface, pattern distorts
- G Creases, abrades, durability
- H Humidity
- I No tufting - nap, pattern
- J Glues poorly
- K Very thick
- L Thin, porous
- M Steams poorly
- N Memory weak
- O Color striates
- P No center seam

- R OK Loose seat or back
- S OK Tight seat or back
- T OK Lumbar
- U OK Arm & body
- V OK Center seam
- W OK Tufting
- X OK Gluing
- Y Approved
- Z Unsuitable

**Tuohy Furniture Corporation**

42 Saint Albans Place  
 Chatfield, Minnesota 55923  
 e: info@tuohyfurniture.com  
 t: 507.867.4280  
 www.tuohyfurniture.com



TUOHY UPHOLSTERY PARTNERSHIPS

Designtex

**KnollTextiles**

Maharam

**Tuohy Furniture Corporation**

42 Saint Albans Place, Chatfield, MN 55923

t 507.867.4280

info@tuohyfurniture.com

www.tuohyfurniture.com

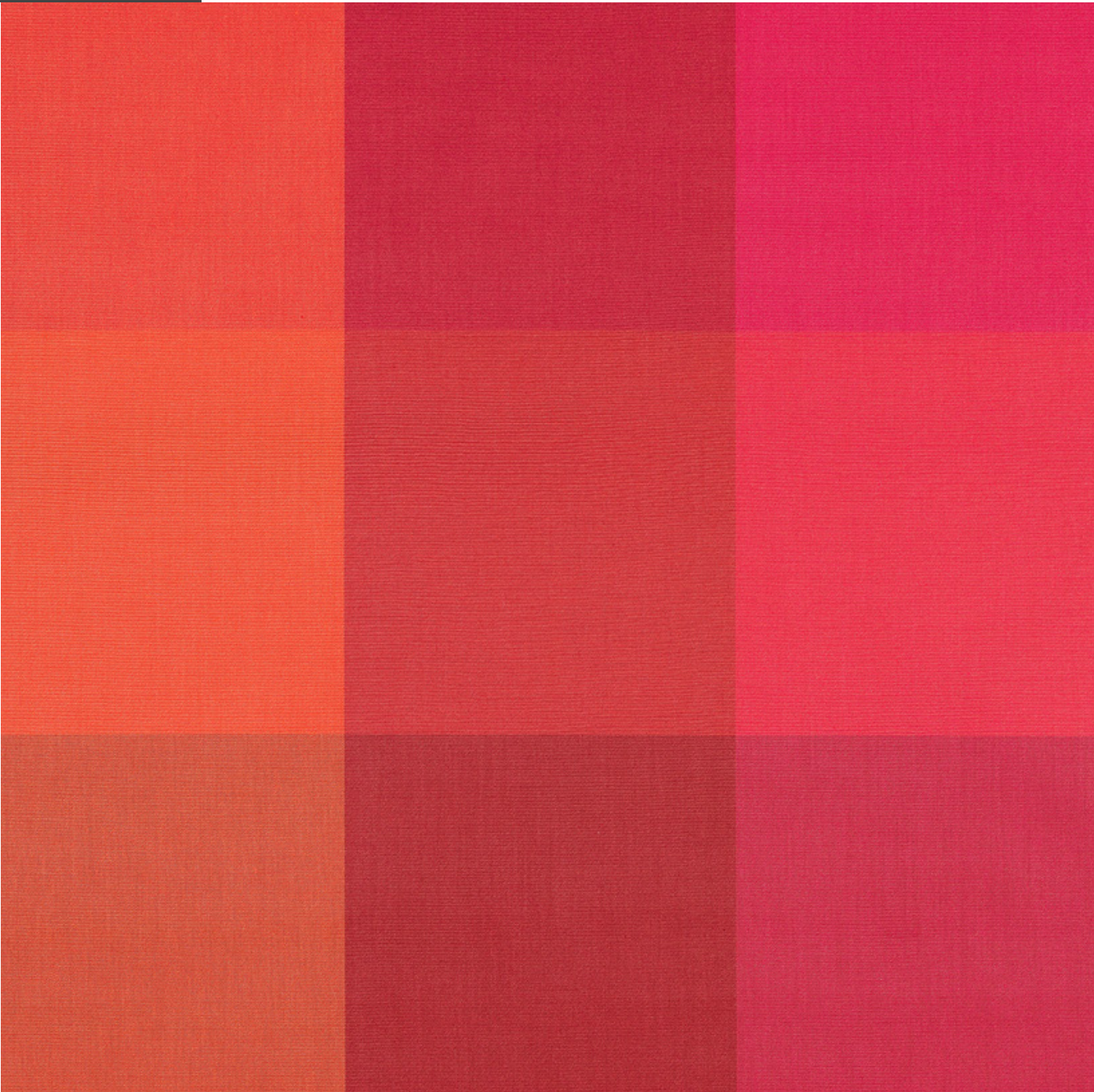
TUOHY

UPHOLSTERY PARTNERSHIPS

**maharam**

June 1, 2021

TUOHY



### Evaluation Codes by Product

Pattern Name	Pattern Number	Evaluation	Grade**	Material Req'd	Backing Req'd	902	Aim	Arcelle	Bau	Bryant Park	Domino	Edo	Fabric Panels	Genevieve	International	International II	Kaesi	Leit	Moderna	Ren	Selone	Vita	
A Band Apart	466000	Caution		25%		S	S	S	X	RSU	SU	SU	X	RSU	RSU	SU	STU	SU	SU	SU	RSU	SU	
Abacus	466118	Caution		0%		ENS	ENS	ENS	EN	ENRSU	ENSU	ENSU	EN	ENRSU	ENRSU	ENSU	ENSTU	ENSU	ENSU	ENSU	ENRSU	ENSU	
Agency	466001	Caution		+25%		A	A	A	A	A	A	A	A	A	A	A	AT	A	A	A	A	A	
Albemarle	466435	Unsuitable		+15%		HZ	HZ	HZ	HZ	HZ	HZ	HZ	HZ	HZ	HZ	HZ	HZ	HZ	HZ	HZ	HZ	HZ	
Alpaca Epingle	465902	Caution		+0%		S	S	S	X	RSU	SU	SU	X	RSU	RSU	SU	STU	SU	SU	SU	RSU	SU	
Alpaca Velvet	465901	Caution		+0%		S	S	S	X	RSU	SU	SU	X	RSU	RSU	SU	STU	SU	SU	SU	RSU	SU	
Ample	466532	Caution		+0%		S	S	S		SU	SU	SU		SU	SU	SU	STU	SU	SU	SU	SU	SU	
Amulet	466482	Unsuitable		+20%		AZ	AZ	AZ	AZ	AZ	AZ	AZ	AZ	AZ	AZ	AZ	AZ	AZ	AZ	AZ	AZ	AZ	
Anagram	466067	Caution		+25%		S	S	S		RSU	SU	SU		RSU	RSU	SU	STU	SU	SU	SU	RSU	SU	
Angles	466477	Unsuitable		10%		ABZ	ABZ	ABZ	ABZ	ABZ	ABZ	ABZ	ABZ	ABZ	ABZ	ABZ	ABZ	ABZ	ABZ	ABZ	ABZ	ABZ	
Apt	466392	Caution		+0%		ENS	ENS	ENS	ENX	ENRSU	ENSU	ENSU	ENX	ENRSU	ENRSU	ENSU	ENSTU	ENSU	ENSU	ENSU	ENRSU	ENSU	
Arabesque	466204	Caution		+0%		BS	BS	BS	B	BRSU	BSU	BSU	B	BRSU	BRSU	BSU	BSTU	BSU	BSU	BSU	BRSU	BSU	
Arcade	466447	Caution		+25%		BS	BS	BS	B	BRSU	BSU	BSU	B	BRSU	BRSU	BSU	BSTU	BSU	BSU	BSU	BRSU	BSU	
Aria	459950	Unsuitable		+0%		AENZ	AENZ	AENZ	AENZ	AENZ	AENZ	AENZ	AENZ	AENZ	AENZ	AENZ	AENZ	AENZ	AENZ	AENZ	AENZ	AENZ	AENZ
Article	458600	Caution		+0%		ENS	ENS	ENS	EN	ENRSU	ENSU	ENSU	EN	ENRSU	ENRSU	ENSU	ENSTU	ENSU	ENSU	ENSU	ENRSU	ENSU	
Assembled Check	466345	Caution		+25%		S	S	S		RSU	SU	SU		RSU	RSU	SU	STU	SU	SU	SU	RSU	SU	
Balm	700018	Approved		+15%		Y	Y	Y	Y	Y	Y	Y	Y	Y	Y	Y	Y	Y	Y	Y	Y	Y	
Bander	466442	Unsuitable		+25%		BHZ	BHZ	BHZ	BHZ	BHZ	BHZ	BHZ	BHZ	BHZ	BHZ	BHZ	BHZ	BHZ	BHZ	BHZ	BHZ	BHZ	
Bask	700009	Approved		+15%		Y	Y	Y	Y	Y	Y	Y	Y	Y	Y	Y	Y	Y	Y	Y	Y	Y	
Bavaria	466162	Caution		+25%		S	S	S		RSU	SU	SU		RSU	RSU	SU	STU	SU	SU	SU	RSU	SU	
Beacon	466405	Caution		+10%		BENZ	BENZ	BENZ	BENZ	BENZ	BENZ	BENZ	BENZ	BENZ	BENZ	BENZ	BENZ	BENZ	BENZ	BENZ	BENZ	BENZ	
Beck	466570	Approved		+0%		Y	Y	Y	Y	Y	Y	Y	Y	Y	Y	Y	Y	Y	Y	Y	Y	Y	
Beryl	466508	Caution		+0%		S	S	S		RSU	SU	SU		RSU	RSU	SU	STU	SU	SU	SU	RSU	SU	
Bespoke Stripe	463540	Caution		0%		S	S	S		RSU	SU	SU		RSU	RSU	SU	STU	SU	SU	SU	RSU	SU	
Big Stripe	466174	Caution		Quote		AS	AS	AS	A	ARSU	ASU	ASU	A	ARSU	ARSU	ASU	ASTU	ASU	ASU	ASU	ARSU	ASU	
Bind	466437	Unsuitable		+0%		GMZ	GMZ	GMZ	GMZ	GMZ	GMZ	GMZ	GMZ	GMZ	GMZ	GMZ	GMZ	GMZ	GMZ	GMZ	GMZ	GMZ	
Blended Stripe	466412	Caution		15%		S	S	S		RSU	SU	SU		RSU	RSU	SU	STU	SU	SU	SU	RSU	SU	
Bluff	466489	Approved		+0%		Y	Y	Y	Y	Y	Y	Y	Y	Y	Y	Y	Y	Y	Y	Y	Y	Y	
Blumen	462870	Unsuitable		+25%		ABGZ	ABGZ	ABGZ	ABGZ	ABGZ	ABGZ	ABGZ	ABGZ	ABGZ	ABGZ	ABGZ	ABGZ	ABGZ	ABGZ	ABGZ	ABGZ	ABGZ	
Bond	466585	Caution		+20%		S	S	S		RSU	SU	SU		RSU	RSU	SU	STU	SU	SU	SU	RSU	SU	
Borders	466082	Unsuitable		Quote		BGZ	BGZ	BGZ	BGZ	BGZ	BGZ	BGZ	BGZ	BGZ	BGZ	BGZ	BGZ	BGZ	BGZ	BGZ	BGZ	BGZ	
Boundary	466193	Caution		+15%		ENS	ENS	ENS	EN	ENRSU	ENSU	ENSU	EN	ENRSU	ENRSU	ENSU	ENSTU	ENSU	ENSU	ENSU	ENRSU	ENSU	
Bright Angle	466331	Caution		+0%		HS	HS	HS	HX	HRSU	HSU	HSU	HX	HRSU	HRSU	HSU	HSTU	HSU	HSU	HSU	HRSU	HSU	
Bright Cube	466329	Unsuitable		+10%		HZ	HZ	HZ	HZ	HZ	HZ	HZ	HZ	HZ	HZ	HZ	HZ	HZ	HZ	HZ	HZ	HZ	
Bright Grid	466330	Caution		+0%		S	S	S		RSU	SU	SU		RSU	RSU	SU	STU	SU	SU	SU	RSU	SU	
Brim	466350	Caution		+20%		A	A	A	A	A	A	A	A	A	A	A	AT	A	A	A	A	A	
Brindle	466418	Unsuitable		+0%		ABJZ	ABJZ	ABJZ	ABJZ	ABJZ	ABJZ	ABJZ	ABJZ	ABJZ	ABJZ	ABJZ	ABJZ	ABJZ	ABJZ	ABJZ	ABJZ	ABJZ	
Brio	466386	Caution		0%		S	S	S		RSU	SU	SU		RSU	RSU	SU	STU	SU	SU	SU	RSU	SU	
Brushed Camel	465977	Unsuitable		+0%		GMZ	GMZ	GMZ	GMZ	GMZ	GMZ	GMZ	GMZ	GMZ	GMZ	GMZ	GMZ	GMZ	GMZ	GMZ	GMZ	GMZ	
Brushed Cashmere	465978	Unsuitable		+0%		GMZ	GMZ	GMZ	GMZ	GMZ	GMZ	GMZ	GMZ	GMZ	GMZ	GMZ	GMZ	GMZ	GMZ	GMZ	GMZ	GMZ	
Brushed Merino	465983	Unsuitable		+0%		GMZ	GMZ	GMZ	GMZ	GMZ	GMZ	GMZ	GMZ	GMZ	GMZ	GMZ	GMZ	GMZ	GMZ	GMZ	GMZ	GMZ	
Buffer	466492	Caution		0%		S	S	S		RSU	SU	SU		RSU	RSU	SU	STU	SU	SU	SU	RSU	SU	
Bureau	466472	Caution		+0%		AS	AS	AS	A	ARSU	ASU	ASU	A	ARSU	ARSU	ASU	ASTU	ASU	ASU	ASU	ARSU	ASU	
Bushel	466490	Unsuitable		+0%		HZ	HZ	HZ	HZ	HZ	HZ	HZ	HZ	HZ	HZ	HZ	HZ	HZ	HZ	HZ	HZ	HZ	
Campana	466571	Unsuitable		+0%		ABLZ	ABLZ	ABLZ	ABLZ	ABLZ	ABLZ	ABLZ	ABLZ	ABLZ	ABLZ	ABLZ	ABLZ	ABLZ	ABLZ	ABLZ	ABLZ	ABLZ	



### Grade

Price grades correlate to those listed in the List Price Schedule for products with upholstery materials.

Please contact Customer Service for patterns graded as **Quote**.

### Extra Material Required

Yardage adjustments are required for those patterns less than 54 inches wide and/or having more than a nominal vertical repeat. This percentage amount must be added to the yardage requirement shown in the TUOHY List Prices and Specification Guide. Price grades shown here have already been adjusted as needed.

### Evaluation Codes

- A Seam, needle, top issues
- B Frays, unravels
- C Knit backing required
- D Acrylic backing required
- E Stretchy, wrinkles, puddles
- F Surface, pattern distorts
- G Creases, abrades, durability
- H Humidity
- I No tufting - nap, pattern
- J Glues poorly
- K Very thick
- L Thin, porous
- M Steams poorly
- N Memory weak
- O Color striates
- P No center seam

- R OK Loose seat or back
- S OK Tight seat or back
- T OK Lumbar
- U OK Arm & body
- V OK Center seam
- W OK Tufting
- X OK Gluing
- Y Approved
- Z Unsuitable

### Tuohy Furniture Corporation

42 Saint Albans Place  
Chatfield, Minnesota 55923  
e: info@tuohyfurniture.com  
t: 507.867.4280  
www.tuohyfurniture.com



### Evaluation Codes by Product

Pattern Name	Pattern Number	Evaluation	Grade**	Material Req'd	Backing Req'd	902	Aim	Arcelle	Bau	Bryant Park	Domino	Edo	Fabric Panels	Genevieve	International	International II	Kaesi	Leit	Moderna	Rien	Selone	Vita
Candor	466496	Approved	+0%			Y	Y	Y	Y	Y	Y	Y	Y	Y	Y	Y	Y	Y	Y	Y	Y	Y
Caper	466384	Unsuitable	+25%			AZ	AZ	AZ	AZ	AZ	AZ	AZ	AZ	AZ	AZ	AZ	AZ	AZ	AZ	AZ	AZ	AZ
Cashmere Ripple	465979	Unsuitable	+0%			GMZ	GMZ	GMZ	GMZ	GMZ	GMZ	GMZ	GMZ	GMZ	GMZ	GMZ	GMZ	GMZ	GMZ	GMZ	GMZ	GMZ
Chalet	466324	Unsuitable	+0%			AZ	AZ	AZ	AZ	AZ	AZ	AZ	AZ	AZ	AZ	AZ	AZ	AZ	AZ	AZ	AZ	AZ
Chasm	466404	Approved	+0%			Y	Y	Y	Y	Y	Y	Y	Y	Y	Y	Y	Y	Y	Y	Y	Y	Y
Chassis	466458	Unsuitable	+0%			HZ	HZ	HZ	HZ	HZ	HZ	HZ	HZ	HZ	HZ	HZ	HZ	HZ	HZ	HZ	HZ	HZ
Checker	459830	Unsuitable	+0%			BZ	BZ	BZ	BZ	BZ	BZ	BZ	BZ	BZ	BZ	BZ	BZ	BZ	BZ	BZ	BZ	BZ
Checker Split	460290	Unsuitable	+10%			BZ	BZ	BZ	BZ	BZ	BZ	BZ	BZ	BZ	BZ	BZ	BZ	BZ	BZ	BZ	BZ	BZ
Chime	465350	Approved	+0%			Y	Y	Y	Y	Y	Y	Y	Y	Y	Y	Y	Y	Y	Y	Y	Y	Y
Chroma	466303	Caution	+0%			BCS	BCS	BCS	BCX	BCRSU	BCSU	BCSU	BCX	BCRSU	BCRSU	BCRSU	BCSTU	BCSU	BCSU	BCSU	BCRSU	BCSU
Circles by Alexander...	466475	Unsuitable	+25%			AHZ	AHZ	AHZ	AHZ	AHZ	AHZ	AHZ	AHZ	AHZ	AHZ	AHZ	AHZ	AHZ	AHZ	AHZ	AHZ	AHZ
Circles by Charles...	458310	Caution	+10%			A	A	A	AX	A	A	A	AX	A	A	A	A	A	A	A	A	A
Circuit	466089	Caution	+25%			AS	AS	AS	A	ARSU	ASU	ASU	A	ARSU	ARSU	ASU	ASTU	ASU	ASU	ASU	ARSU	ASU
Clamber	466385	Unsuitable	+25%			ABZ	ABZ	ABZ	ABZ	ABZ	ABZ	ABZ	ABZ	ABZ	ABZ	ABZ	ABZ	ABZ	ABZ	ABZ	ABZ	ABZ
Coach Cloth	458950	Approved	+0%			Y	Y	Y	Y	Y	Y	Y	Y	Y	Y	Y	Y	Y	Y	Y	Y	Y
Coast	466439	Caution	+10%			S	S	S	X	RSU	SU	SU	X	RSU	RSU	SU	STU	SU	SU	SU	RSU	SU
Coin	466233	Caution	0%			AS	AS	AS	A	ARSU	ASU	ASU	A	ARSU	ARSU	ASU	ASTU	ASU	ASU	ASU	ARSU	ASU
Coin Crypton	466236	Caution	0%			AS	AS	AS	A	ARSU	ASU	ASU	A	ARSU	ARSU	ASU	ASTU	ASU	ASU	ASU	ARSU	ASU
Colorfield	466315	Caution	+25%			BS	BS	BS	BX	BRSU	BSU	BSU	BX	BRSU	BRSU	BSU	BSTU	BSU	BSU	BSU	BRSU	BSU
Colorwheel	466163	Caution	+25%			AS	AS	AS	A	ARSU	ASU	ASU	A	ARSU	ARSU	ASU	ASTU	ASU	ASU	ASU	ARSU	ASU
Column	466192	Unsuitable	+20%			HZ	HZ	HZ	HZ	HZ	HZ	HZ	HZ	HZ	HZ	HZ	HZ	HZ	HZ	HZ	HZ	HZ
Compartment	466154	Caution	+35%			AS	AS	AS	A	ARSU	ASU	ASU	A	ARSU	ARSU	ASU	ASTU	ASU	ASU	ASU	ARSU	ASU
Compound	466196	Approved	+0%			Y	Y	Y	Y	Y	Y	Y	Y	Y	Y	Y	Y	Y	Y	Y	Y	Y
Conduit	466428	Caution	0%			S	S	S	X	RSU	SU	SU	X	RSU	RSU	SU	STU	SU	SU	SU	RSU	SU
Confetti	466203	Caution	+25%			AS	AS	AS	A	ARSU	ASU	ASU	A	ARSU	ARSU	ASU	ASTU	ASU	ASU	ASU	ARSU	ASU
Cosset	466524	Caution	+0%			S	S	S		RSU	SU	SU		RSU	RSU	SU	STU	SU	SU	SU	RSU	SU
Cotton Velvet	466199	Caution	+0%			AS	AS	AS	A	ARSU	ASU	ASU	A	ARSU	ARSU	ASU	ASTU	ASU	ASU	ASU	ARSU	ASU
Cove	466526	Approved	+0%			Y	Y	Y	Y	Y	Y	Y	Y	Y	Y	Y	Y	Y	Y	Y	Y	Y
Crew	466149	Caution	+0%			AS	AS	AS	AX	ARSU	ASU	ASU	AX	ARSU	ARSU	ASU	ASTU	ASU	ASU	ASU	ARSU	ASU
Croft	466498	Unsuitable	+0%			BKZ	BKZ	BKZ	BKZ	BKZ	BKZ	BKZ	BKZ	BKZ	BKZ	BKZ	BKZ	BKZ	BKZ	BKZ	BKZ	BKZ
Crosspatch	458920	Caution	+10%			LS	LS	LS	L	LRSU	LSU	LSU	L	LRSU	LRSU	LSU	LSTU	LSU	LSU	LSU	LRSU	LSU
Crush	464780	Unsuitable	+0%			BHZ	BHZ	BHZ	BHZ	BHZ	BHZ	BHZ	BHZ	BHZ	BHZ	BHZ	BHZ	BHZ	BHZ	BHZ	BHZ	BHZ
Cursive	466335	Unsuitable	+25%			ABCZ	ABCZ	ABCZ	ABCZ	ABCZ	ABCZ	ABCZ	ABCZ	ABCZ	ABCZ	ABCZ	ABCZ	ABCZ	ABCZ	ABCZ	ABCZ	ABCZ
Cycle	466275	Caution	0%			ENS	ENS	ENS	EN	ENRSU	ENSU	ENSU	EN	ENRSU	ENRSU	ENSU	ENSTU	ENSU	ENSU	ENSU	ENRSU	ENSU
Darning Sampler	466460	Unsuitable	+25%			AHZ	AHZ	AHZ	AHZ	AHZ	AHZ	AHZ	AHZ	AHZ	AHZ	AHZ	AHZ	AHZ	AHZ	AHZ	AHZ	AHZ
Darning Sampler Large	466461	Caution	Quote			AJS	AJS	AJS	AJ	AJRSU	AJSU	AJSU	AJ	AJRSU	AJRSU	AJSU	AJSTU	AJSU	AJSU	AJSU	AJRSU	AJSU
Darning Sampler Plaid	466462	Caution	25%			AJ	AJ	AJ	AJ	AJ	AJ	AJ	AJ	AJ	AJ	AJ	AJT	AJ	AJ	AJ	AJ	AJ
Deconstructed Rose	466086	Unsuitable	Quote			GKZ	GKZ	GKZ	GKZ	GKZ	GKZ	GKZ	GKZ	GKZ	GKZ	GKZ	GKZ	GKZ	GKZ	GKZ	GKZ	GKZ
Design 9297	465230	Caution	+10%			ABS	ABS	ABS	AB	ABRSU	ABSU	ABSU	AB	ABRSU	ABRSU	ABSU	ABSTU	ABSU	ABSU	ABSU	ABRSU	ABSU
Dingbats	465994	Caution	+25%			AS	AS	AS	A	ARSU	ASU	ASU	A	ARSU	ARSU	ASU	ASTU	ASU	ASU	ASU	ARSU	ASU
Dot Pattern	458300	Caution	+25%			AB	AB	AB	AB	AB	AB	AB	AB	AB	AB	AB	ABT	AB	AB	AB	AB	AB
Dots	466411	Unsuitable	+10%			AZ	AZ	AZ	AZ	AZ	AZ	AZ	AZ	AZ	AZ	AZ	AZ	AZ	AZ	AZ	AZ	AZ
Double Triangles	459840	Unsuitable	+0%			BZ	BZ	BZ	BZ	BZ	BZ	BZ	BZ	BZ	BZ	BZ	BZ	BZ	BZ	BZ	BZ	BZ
Draft	700002	Approved	+0%			Y	Y	Y	Y	Y	Y	Y	Y	Y	Y	Y	Y	Y	Y	Y	Y	Y
Drape	466145	Caution	0%			ENS	ENS	ENS	ENX	ENRSU	ENSU	ENSU	ENX	ENRSU	ENRSU	ENSU	ENSTU	ENSU	ENSU	ENSU	ENRSU	ENSU



### Grade

Price grades correlate to those listed in the List Price Schedule for products with upholstery materials.

Please contact Customer Service for patterns graded as **Quote**.

### Extra Material Required

Yardage adjustments are required for those patterns less than 54 inches wide and/or having more than a nominal vertical repeat. This percentage amount must be added to the yardage requirement shown in the TUOHY List Prices and Specification Guide. Price grades shown here have already been adjusted as needed.

### Evaluation Codes

- A Seam, needle, top issues
- B Frays, unravels
- C Knit backing required
- D Acrylic backing required
- E Stretchy, wrinkles, puddles
- F Surface, pattern distorts
- G Creases, abrades, durability
- H Humidity
- I No tufting - nap, pattern
- J Glues poorly
- K Very thick
- L Thin, porous
- M Steams poorly
- N Memory weak
- O Color striates
- P No center seam

- R OK Loose seat or back
- S OK Tight seat or back
- T OK Lumbar
- U OK Arm & body
- V OK Center seam
- W OK Tufting
- X OK Gluing
- Y Approved
- Z Unsuitable

### Tuohy Furniture Corporation

42 Saint Albans Place  
Chatfield, Minnesota 55923  
e: info@tuohyfurniture.com  
t: 507.867.4280  
www.tuohyfurniture.com

### Evaluation Codes by Product

Pattern Name	Pattern Number	Evaluation	Grade**	Material Req'd	Backing Req'd	902	Aim	Arcelle	Bau	Bryant Park	Domino	Edo	Fabric Panels	Genevieve	International	International II	Kaesi	Leit	Moderna	Ren	Selone	Vita
Dwell	466419	Caution	+0%	S	S	S	S	S	RSU	SU	SU	RSU	RSU	SU	STU	SU	SU	SU	SU	RSU	SU	
Eden	466258	Unsuitable	Quote	AZ	AZ	AZ	AZ	AZ	AZ	AZ	AZ	AZ	AZ	AZ	AZ	AZ	AZ	AZ	AZ	AZ	AZ	AZ
Edges	466476	Unsuitable	+15%	HJZ	HJZ	HJZ	HJZ	HJZ	HJZ	HJZ	HJZ	HJZ	HJZ	HJZ	HJZ	HJZ	HJZ	HJZ	HJZ	HJZ	HJZ	HJZ
Ellipsis	466334	Caution	10%	ENS	ENS	ENS	EN	ENRSU	ENSU	ENSU	EN	ENRSU	ENRSU	ENSU	ENSTU	ENSU	ENSU	ENSU	ENRSU	ENRSU	ENRSU	ENRSU
Embed	466457	Caution	+0%	S	S	S	X	RSU	SU	SU	X	RSU	RSU	SU	STU	SU	SU	SU	RSU	SU	SU	SU
Emit	466378	Unsuitable	+0%	AZ	AZ	AZ	AZ	AZ	AZ	AZ	AZ	AZ	AZ	AZ	AZ	AZ	AZ	AZ	AZ	AZ	AZ	AZ
Enmesh	466338	Unsuitable	0%	ANZ	ANZ	ANZ	ANZ	ANZ	ANZ	ANZ	ANZ	ANZ	ANZ	ANZ	ANZ	ANZ	ANZ	ANZ	ANZ	ANZ	ANZ	ANZ
Entwine	466397	Unsuitable	+0%	BZ	BZ	BZ	BZ	BZ	BZ	BZ	BZ	BZ	BZ	BZ	BZ	BZ	BZ	BZ	BZ	BZ	BZ	BZ
Epingle Stripe	466007	Caution	0%	S	S	S	S	RSU	SU	SU	S	RSU	RSU	SU	STU	SU	SU	SU	RSU	SU	SU	SU
Equate	466383	Caution	+0%	S	S	S	S	RSU	SU	SU	S	RSU	RSU	SU	STU	SU	SU	SU	RSU	SU	SU	SU
Etch	466502	Unsuitable	Quote	HZ	HZ	HZ	HZ	HZ	HZ	HZ	HZ	HZ	HZ	HZ	HZ	HZ	HZ	HZ	HZ	HZ	HZ	HZ
Exaggerated Plaid	466039	Caution	+0%	S	S	S	S	RSU	SU	SU	S	RSU	RSU	SU	STU	SU	SU	SU	RSU	SU	SU	SU
Facets	459850	Caution	+0%	B	B	B	B	B	B	B	B	B	B	B	B	B	B	B	B	B	B	B
Fathom	466013	Caution	0%	S	S	S	S	RSU	SU	SU	S	RSU	RSU	SU	STU	SU	SU	SU	RSU	SU	SU	SU
Feature	466343	Caution	0%	AS	AS	AS	A	ARSU	ASU	ASU	A	ARSU	ARSU	ASU	ASTU	ASU	ASU	ASU	ARSU	ASU	ASU	ASU
Festoon	466525	Caution	10%	S	S	S	S	RSU	SU	SU	S	RSU	RSU	SU	STU	SU	SU	SU	RSU	SU	SU	SU
Firma	466582	Caution	+0%	S	S	S	S	RSU	SU	SU	S	RSU	RSU	SU	STU	SU	SU	SU	RSU	SU	SU	SU
Flint	466543	Caution	+25%	S	S	S	X	RSU	SU	SU	X	RSU	RSU	SU	STU	SU	SU	SU	RSU	SU	SU	SU
Fluent Crypton	466073	Caution	+0%	S	S	S	X	RSU	SU	SU	X	RSU	RSU	SU	STU	SU	SU	SU	RSU	SU	SU	SU
Flurry	466480	Caution	+0%	BCENS	BCENS	BCENS	BCENX	BCENRSU	BCENSU	BCENSU	BCENX	BCENRSU	BCENRSU	BCENSU	BCENSTU	BCENSU	BCENSU	BCENSU	BCENRSU	BCENSU	BCENRSU	BCENSU
Fluted Silk	465982	Unsuitable	+0%	GMZ	GMZ	GMZ	GMZ	GMZ	GMZ	GMZ	GMZ	GMZ	GMZ	GMZ	GMZ	GMZ	GMZ	GMZ	GMZ	GMZ	GMZ	GMZ
Flutter	466430	Unsuitable	Quote	ALZ	ALZ	ALZ	ALZ	ALZ	ALZ	ALZ	ALZ	ALZ	ALZ	ALZ	ALZ	ALZ	ALZ	ALZ	ALZ	ALZ	ALZ	ALZ
Fold	466292	Unsuitable	20%	ENZ	ENZ	ENZ	ENZ	ENZ	ENZ	ENZ	ENZ	ENZ	ENZ	ENZ	ENZ	ENZ	ENZ	ENZ	ENZ	ENZ	ENZ	ENZ
Foliage	466257	Unsuitable	+25%	AZ	AZ	AZ	AZ	AZ	AZ	AZ	AZ	AZ	AZ	AZ	AZ	AZ	AZ	AZ	AZ	AZ	AZ	AZ
Fore	466464	Unsuitable	+0%	AGZ	AGZ	AGZ	AGZ	AGZ	AGZ	AGZ	AGZ	AGZ	AGZ	AGZ	AGZ	AGZ	AGZ	AGZ	AGZ	AGZ	AGZ	AGZ
Frequency	466504	Caution	+20%	S	S	S	S	RSU	SU	SU	S	RSU	RSU	SU	STU	SU	SU	SU	RSU	SU	SU	SU
Fruit	466262	Caution	+25%	S	S	S	S	RSU	SU	SU	S	RSU	RSU	SU	STU	SU	SU	SU	RSU	SU	SU	SU
Gallant	466485	Unsuitable	+0%	HZ	HZ	HZ	HZ	HZ	HZ	HZ	HZ	HZ	HZ	HZ	HZ	HZ	HZ	HZ	HZ	HZ	HZ	HZ
Garden	466134	Caution	+25%	AS	AS	AS	A	ARSU	ASU	ASU	A	ARSU	ARSU	ASU	ASTU	ASU	ASU	ASU	ARSU	ASU	ASU	ASU
Gemma	466568	Approved	+0%	Y	Y	Y	Y	Y	Y	Y	Y	Y	Y	Y	Y	Y	Y	Y	Y	Y	Y	Y
Gemma Multi	466569	Approved	+0%	Y	Y	Y	Y	Y	Y	Y	Y	Y	Y	Y	Y	Y	Y	Y	Y	Y	Y	Y
Geometri	459970	Unsuitable	+25%	BZ	BZ	BZ	BZ	BZ	BZ	BZ	BZ	BZ	BZ	BZ	BZ	BZ	BZ	BZ	BZ	BZ	BZ	BZ
Gild	466432	Approved	+0%	Y	Y	Y	Y	Y	Y	Y	Y	Y	Y	Y	Y	Y	Y	Y	Y	Y	Y	Y
Glaze	466506	Caution	Quote	S	S	S	S	RSU	SU	SU	S	RSU	RSU	SU	STU	SU	SU	SU	RSU	SU	SU	SU
Grid	466210	Caution	Quote	S	S	S	S	RSU	SU	SU	S	RSU	RSU	SU	STU	SU	SU	SU	RSU	SU	SU	SU
Grove	466344	Caution	0%	S	S	S	X	RSU	SU	SU	X	RSU	RSU	SU	STU	SU	SU	SU	RSU	SU	SU	SU
Gust	466519	Approved	+0%	Y	Y	Y	Y	Y	Y	Y	Y	Y	Y	Y	Y	Y	Y	Y	Y	Y	Y	Y
Hearth	466536	Caution	+0%	S	S	S	S	RSU	SU	SU	S	RSU	RSU	SU	STU	SU	SU	SU	RSU	SU	SU	SU
Herringbone Stripe	465945	Caution	10%	S	S	S	S	RSU	SU	SU	S	RSU	RSU	SU	STU	SU	SU	SU	RSU	SU	SU	SU
Hewn	466398	Unsuitable	+0%	GMZ	GMZ	GMZ	GMZ	GMZ	GMZ	GMZ	GMZ	GMZ	GMZ	GMZ	GMZ	GMZ	GMZ	GMZ	GMZ	GMZ	GMZ	GMZ
Horsehair Basket	465981	Unsuitable	+50%	Z	Z	Z	Z	Z	Z	Z	Z	Z	Z	Z	Z	Z	Z	Z	Z	Z	Z	Z
Horsehair Check	465980	Unsuitable	+50%	MZ	MZ	MZ	MZ	MZ	MZ	MZ	MZ	MZ	MZ	MZ	MZ	MZ	MZ	MZ	MZ	MZ	MZ	MZ
Horsehair Striae	465984	Unsuitable	+50%	MZ	MZ	MZ	MZ	MZ	MZ	MZ	MZ	MZ	MZ	MZ	MZ	MZ	MZ	MZ	MZ	MZ	MZ	MZ
Houndstooth	466253	Caution	+10%	AS	AS	AS	AX	ARSU	ASU	ASU	AX	ARSU	ARSU	ASU	ASTU	ASU	ASU	ASU	ARSU	ASU	ASU	ASU
Hours	466092	Caution	0%	ACS	ACS	ACS	AC	ACRSU	ACSU	ACSU	AC	ACRSU	ACRSU	ACSU	ACSTU	ACSU	ACSU	ACSU	ACRSU	ACSU	ACSU	ACSU



#### Grade

Price grades correlate to those listed in the List Price Schedule for products with upholstery materials.

Please contact Customer Service for patterns graded as **Quote**.

#### Extra Material Required

Yardage adjustments are required for those patterns less than 54 inches wide and/or having more than a nominal vertical repeat. This percentage amount must be added to the yardage requirement shown in the TUOHY List Prices and Specification Guide. Price grades shown here have already been adjusted as needed.

#### Evaluation Codes

- A Seam, needle, top issues
- B Frays, unravels
- C Knit backing required
- D Acrylic backing required
- E Stretchy, wrinkles, puddles
- F Surface, pattern distorts
- G Creases, abrades, durability
- H Humidity
- I No tufting - nap, pattern
- J Glues poorly
- K Very thick
- L Thin, porous
- M Steams poorly
- N Memory weak
- O Color striates
- P No center seam

- R OK Loose seat or back
- S OK Tight seat or back
- T OK Lumbar
- U OK Arm & body
- V OK Center seam
- W OK Tufting
- X OK Gluing
- Y Approved
- Z Unsuitable

#### Tuohy Furniture Corporation

42 Saint Albans Place  
Chatfield, Minnesota 55923  
e: info@tuohyfurniture.com  
t: 507.867.4280  
www.tuohyfurniture.com

### Evaluation Codes by Product

Pattern Name	Pattern Number	Evaluation	Grade**	Material Req'd	Backing Req'd	902	Aim	Arcelle	Bau	Bryant Park	Domino	Edo	Fabric Panels	Genevieve	International	International II	Kaesi	Leit	Moderna	Rien	Selone	Vita
Hue	700003	Approved	+0%			Y	Y	Y	Y	Y	Y	Y	Y	Y	Y	Y	Y	Y	Y	Y	Y	Y
Industry	466255	Caution	+25%			S	S	S		RSU	SU	SU		RSU	RSU	SU	STU	SU	SU	SU	RSU	SU
Inlay	466353	Unsuitable	+25%			HZ	HZ	HZ	HZ	HZ	HZ	HZ	HZ	HZ	HZ	HZ	HZ	HZ	HZ	HZ	HZ	HZ
Insignia	466308	Caution	+25%			AB	AB	AB	AB	AB	AB	AB	AB	AB	AB	AB	ABT	AB	AB	AB	AB	AB
Instill	466351	Approved	+0%			Y	Y	Y	Y	Y	Y	Y	Y	Y	Y	Y	Y	Y	Y	Y	Y	Y
Jacobs Coat	462270	Unsuitable	+0%			AZ	AZ	AZ	AZ	AZ	AZ	AZ	AZ	AZ	AZ	AZ	AZ	AZ	AZ	AZ	AZ	AZ
Jasper	466563	Unsuitable	+0%			ABHZ	ABHZ	ABHZ	ABHZ	ABHZ	ABHZ	ABHZ	ABHZ	ABHZ	ABHZ	ABHZ	ABHZ	ABHZ	ABHZ	ABHZ	ABHZ	ABHZ
Keen	466433	Unsuitable	+0%			AZ	AZ	AZ	AZ	AZ	AZ	AZ	AZ	AZ	AZ	AZ	AZ	AZ	AZ	AZ	AZ	AZ
Lariat	440401	Approved	+0%			Y	Y	Y	Y	Y	Y	Y	Y	Y	Y	Y	Y	Y	Y	Y	Y	Y
Lean	466438	Caution	+25%			S	S	S		RSU	SU	SU		RSU	RSU	SU	STU	SU	SU	SU	RSU	SU
Ledger	463770	Approved	+0%			Y	Y	Y	Y	Y	Y	Y	Y	Y	Y	Y	Y	Y	Y	Y	Y	Y
Lens	466323	Caution	+25%			ENS	ENS	ENS	EN	ENSU	ENSU	ENSU	EN	ENSU	ENSU	ENSU	ENSTU	ENSU	ENSU	ENSU	ENSU	ENSU
Levity	466518	Approved	+0%			Y	Y	Y	Y	Y	Y	Y	Y	Y	Y	Y	Y	Y	Y	Y	Y	Y
Lift	466302	Caution	+10%			S	S	S	X	RSU	SU	SU	X	RSU	RSU	SU	STU	SU	SU	SU	RSU	SU
Limn	466407	Unsuitable	+25%			HZ	HZ	HZ	HZ	HZ	HZ	HZ	HZ	HZ	HZ	HZ	HZ	HZ	HZ	HZ	HZ	HZ
Linden	466537	Caution	+25%			S	S	S	X	RSU	SU	SU	X	RSU	RSU	SU	STU	SU	SU	SU	RSU	SU
Lineage	466127	Caution	0%			ENS	ENS	ENS	EN	ENRSU	ENSU	ENSU	EN	ENRSU	ENRSU	ENSU	ENSTU	ENSU	ENSU	ENSU	ENRSU	ENSU
Link	466328	Unsuitable	+0%			ABZ	ABZ	ABZ	ABZ	ABZ	ABZ	ABZ	ABZ	ABZ	ABZ	ABZ	ABZ	ABZ	ABZ	ABZ	ABZ	ABZ
Lithe	466394	Unsuitable	+10%			HZ	HZ	HZ	HZ	HZ	HZ	HZ	HZ	HZ	HZ	HZ	HZ	HZ	HZ	HZ	HZ	HZ
Loam	700006	Approved	+0%			Y	Y	Y	Y	Y	Y	Y	Y	Y	Y	Y	Y	Y	Y	Y	Y	Y
Loop	466469	Caution	0%			AS	AS	AS	A	ARSU	ASU	ASU	A	ARSU	ARSU	ASU	ASTU	ASU	ASU	ASU	ARSU	ASU
Luce	466566	Caution	+0%			S	S	S		RSU	SU	SU		RSU	RSU	SU	STU	SU	SU	SU	RSU	SU
Lunar	466356	Caution	+10%			S	S	S		RSU	SU	SU		RSU	RSU	SU	STU	SU	SU	SU	RSU	SU
Manner	466177	Caution	+0%			AS	AS	AS	AX	ARSU	ASU	ASU	AX	ARSU	ARSU	ASU	ASTU	ASU	ASU	ASU	ARSU	ASU
Mantle	466517	Caution	+0%			S	S	S		RSU	SU	SU		RSU	RSU	SU	STU	SU	SU	SU	RSU	SU
Massive Paisley	465915	Unsuitable	Quote			AZ	AZ	AZ	AZ	AZ	AZ	AZ	AZ	AZ	AZ	AZ	AZ	AZ	AZ	AZ	AZ	AZ
Mechanism	465952	Unsuitable	0%			AZ	AZ	AZ	AZ	AZ	AZ	AZ	AZ	AZ	AZ	AZ	AZ	AZ	AZ	AZ	AZ	AZ
Medium	463490	Approved	+0%			Y	Y	Y	Y	Y	Y	Y	Y	Y	Y	Y	Y	Y	Y	Y	Y	Y
Mela	466483	Unsuitable	Quote			AHZ	AHZ	AHZ	AHZ	AHZ	AHZ	AHZ	AHZ	AHZ	AHZ	AHZ	AHZ	AHZ	AHZ	AHZ	AHZ	AHZ
Melange Tweed	461190	Unsuitable	+0%			AZ	AZ	AZ	AZ	AZ	AZ	AZ	AZ	AZ	AZ	AZ	AZ	AZ	AZ	AZ	AZ	AZ
Meld	466387	Caution	+0%			S	S	S	X	RSU	SU	SU	X	RSU	RSU	SU	STU	SU	SU	SU	RSU	SU
Merit	466444	Caution	+0%			AS	AS	AS	AX	ARSU	ASU	ASU	AX	ARSU	ARSU	ASU	ASTU	ASU	ASU	ASU	ARSU	ASU
Mesh	466371	Unsuitable	+0%			AZ	AZ	AZ	AZ	AZ	AZ	AZ	AZ	AZ	AZ	AZ	AZ	AZ	AZ	AZ	AZ	AZ
Messenger	458640	Caution	+0%			S	S	S	X	RSU	SU	SU	X	RSU	RSU	SU	STU	SU	SU	SU	RSU	SU
Metaphor	466553	Approved	+0%			Y	Y	Y	Y	Y	Y	Y	Y	Y	Y	Y	Y	Y	Y	Y	Y	Y
Metric	466014	Unsuitable	+0%			BZ	BZ	BZ	BZ	BZ	BZ	BZ	BZ	BZ	BZ	BZ	BZ	BZ	BZ	BZ	BZ	BZ
Micro	466099	Caution	+0%			S	S	S		RSU	SU	SU		RSU	RSU	SU	STU	SU	SU	SU	RSU	SU
Mikado	459330	Unsuitable	+15%			AENZ	AENZ	AENZ	AENZ	AENZ	AENZ	AENZ	AENZ	AENZ	AENZ	AENZ	AENZ	AENZ	AENZ	AENZ	AENZ	AENZ
Milestone	403901	Caution	+0%			S	S	S	X	RSU	SU	SU	X	RSU	RSU	SU	STU	SU	SU	SU	RSU	SU
Millerstripe	462250	Unsuitable	0%			ABZ	ABZ	ABZ	ABZ	ABZ	ABZ	ABZ	ABZ	ABZ	ABZ	ABZ	ABZ	ABZ	ABZ	ABZ	ABZ	ABZ
Mimic	466136	Caution	+0%			ENS	ENS	ENS	EN	ENRSU	ENSU	ENSU	EN	ENRSU	ENRSU	ENSU	ENSTU	ENSU	ENSU	ENSU	ENRSU	ENSU
Mingled Plaid	466364	Caution	+15%			S	S	S		RSU	SU	SU		RSU	RSU	SU	STU	SU	SU	SU	RSU	SU
Minicheck	466268	Caution	0%			S	S	S	X	RSU	SU	SU	X	RSU	RSU	SU	STU	SU	SU	SU	RSU	SU
Mister	466178	Unsuitable	+25%			AZ	AZ	AZ	AZ	AZ	AZ	AZ	AZ	AZ	AZ	AZ	AZ	AZ	AZ	AZ	AZ	AZ
Mode	466337	Caution	+0%			BCS	BCS	BCS	BCX	BCRSU	BCSU	BCSU	BCX	BCRSU	BCRSU	BCSU	BCSTU	BCSU	BCSU	BCSU	BCRSU	BCSU

### Grade

Price grades correlate to those listed in the List Price Schedule for products with upholstery materials.

Please contact Customer Service for patterns graded as **Quote**.

### Extra Material Required

Yardage adjustments are required for those patterns less than 54 inches wide and/or having more than a nominal vertical repeat. This percentage amount must be added to the yardage requirement shown in the TUOHY List Prices and Specification Guide. Price grades shown here have already been adjusted as needed.

### Evaluation Codes

A Seam, needle, top issues  
B Frays, unravels  
C Knit backing required  
D Acrylic backing required  
E Stretchy, wrinkles, puddles  
F Surface, pattern distorts  
G Creases, abrades, durability  
H Humidity  
I No tufting - nap, pattern  
J Glues poorly  
K Very thick  
L Thin, porous  
M Steams poorly  
N Memory weak  
O Color striates  
P No center seam

R OK Loose seat or back  
S OK Tight seat or back  
T OK Lumbar  
U OK Arm & body  
V OK Center seam  
W OK Tufting  
X OK Gluing  
Y Approved  
Z Unsuitable

### Tuohy Furniture Corporation

42 Saint Albans Place  
Chatfield, Minnesota 55923  
e: info@tuohyfurniture.com  
t: 507.867.4280  
www.tuohyfurniture.com



### Evaluation Codes by Product

Pattern Name	Pattern Number	Evaluation	Grade**	Material Req'd	Backing Req'd	902	Aim	Arcelle	Bau	Bryant Park	Domino	Edo	Fabric Panels	Genevieve	International	International II	Kaesi	Leit	Moderna	Rien	Selone	Vita
Mohair Extreme	464820	Caution	+0%			S	S	S	X	RSU	SU	SU	X	RSU	RSU	SU	STU	SU	SU	SU	RSU	SU
Mohair Supreme	451801	Caution	+0%			S	S	S	X	RSU	SU	SU	X	RSU	RSU	SU	STU	SU	SU	SU	RSU	SU
Monk's Wool	457301	Caution	0%		•	BCS	BCS	BCS	BC	BCRSU	BCSU	BCSU	BC	BCRSU	BCRSU	BCSU	BCSTU	BCSU	BCSU	BCSU	BCRSU	BCSU
Monsoon	466481	Caution	10%			S	S	S		RSU	SU	SU		RSU	RSU	SU	STU	SU	SU	SU	RSU	SU
Multiply	466341	Caution	+20%			S	S	S	X	RSU	SU	SU	X	RSU	RSU	SU	STU	SU	SU	SU	RSU	SU
Murmur	466446	Caution	+0%		•	CS	CS	CS	CX	CRSU	CSU	CSU	CX	CRSU	CRSU	CSU	CSTU	CSU	CSU	CSU	CRSU	CSU
Muse	466487	Caution	+0%		•	ACS	ACS	ACS	AC	ACRSU	ACSU	ACSU	AC	ACRSU	ACRSU	ACSU	ACSTU	ACSU	ACSU	ACSU	ACRSU	ACSU
Names	462510	Caution	+25%			AS	AS	AS	A	ARSU	ASU	ASU	A	ARSU	ARSU	ASU	ASTU	ASU	ASU	ASU	ARSU	ASU
Nestle	466388	Unsuitable	+0%			GMZ	GMZ	GMZ	GMZ	GMZ	GMZ	GMZ	GMZ	GMZ	GMZ	GMZ	GMZ	GMZ	GMZ	GMZ	GMZ	GMZ
Nico	466564	Unsuitable	+0%			HZ	HZ	HZ	HZ	HZ	HZ	HZ	HZ	HZ	HZ	HZ	HZ	HZ	HZ	HZ	HZ	HZ
Nimble	466488	Unsuitable	+0%			EGNZ	EGNZ	EGNZ	EGNZ	EGNZ	EGNZ	EGNZ	EGNZ	EGNZ	EGNZ	EGNZ	EGNZ	EGNZ	EGNZ	EGNZ	EGNZ	EGNZ
Offset	465951	Caution	+15%			AS	AS	AS	AX	ARS	AS	AS	AX	ARS	ARS	AS	AST	AS	AS	AS	ARS	AS
Optik	459960	Caution	+10%			AB	AB	AB	AB	AB	AB	AB	AB	AB	AB	AB	ABT	AB	AB	AB	AB	AB
Orakelblume	463900	Caution	+10%														T					
Orbit	466415	Caution	+0%														T					
Ottoman Stripe	466142	Caution	+10%			ABS	ABS	ABS	ABX	ABRSU	ABSU	ABSU	ABX	ABRSU	ABRSU	ABSU	ABSTU	ABSU	ABSU	ABSU	ABRSU	ABSU
Overlapping Stripe	466495	Unsuitable	+25%			HZ	HZ	HZ	HZ	HZ	HZ	HZ	HZ	HZ	HZ	HZ	HZ	HZ	HZ	HZ	HZ	HZ
Pace	700011	Approved	+0%			Y	Y	Y	Y	Y	Y	Y	Y	Y	Y	Y	Y	Y	Y	Y	Y	Y
Painted Stripe	465998	Unsuitable	+15%			BZ	BZ	BZ	BZ	BZ	BZ	BZ	BZ	BZ	BZ	BZ	BZ	BZ	BZ	BZ	BZ	BZ
Paisley Brocade	466559	Unsuitable	Quote			ABZ	ABZ	ABZ	ABZ	ABZ	ABZ	ABZ	ABZ	ABZ	ABZ	ABZ	ABZ	ABZ	ABZ	ABZ	ABZ	ABZ
Palio	466107	Caution	Quote														T					
Pallet	466531	Caution	+0%			Y	Y	Y	Y	Y	Y	Y	Y	Y	Y	Y	Y	Y	Y	Y	Y	Y
Parched Silk	465974	Unsuitable	+0%			GMZ	GMZ	GMZ	GMZ	GMZ	GMZ	GMZ	GMZ	GMZ	GMZ	GMZ	GMZ	GMZ	GMZ	GMZ	GMZ	GMZ
Pare	466359	Caution	+0%		•	ACS	ACS	ACS	AC	ACRSU	ACSU	ACSU	AC	ACRSU	ACRSU	ACSU	ACSTU	ACSU	ACSU	ACSU	ACRSU	ACSU
Parquet	466376	Caution	+25%			AS	AS	AS	AX	ARSU	ASU	ASU	AX	ARSU	ARSU	ASU	ASTU	ASU	ASU	ASU	ARSU	ASU
Passel	466470	Unsuitable	+10%			GMZ	GMZ	GMZ	GMZ	GMZ	GMZ	GMZ	GMZ	GMZ	GMZ	GMZ	GMZ	GMZ	GMZ	GMZ	GMZ	GMZ
Pebble Wool	457401	Caution	+0%		•	CS	CS	CS	C	CRSU	CSU	CSU	C	CRSU	CRSU	CSU	CSTU	CSU	CSU	CSU	CRSU	CSU
Pebble Wool Multi	461200	Caution	+0%		•	CS	CS	CS	C	CRSU	CSU	CSU	C	CRSU	CRSU	CSU	CSTU	CSU	CSU	CSU	CRSU	CSU
Pepper	466486	Caution	0%			ABJS	ABJS	ABJS	ABJ	ABJRSU	ABJSU	ABJSU	ABJ	ABJRSU	ABJRSU	ABJSU	ABJSTU	ABJSU	ABJSU	ABJSU	ABJRSU	ABJSU
Petra	466580	Caution	+0%			S	S	S		RSU	SU	SU		RSU	SU	SU	STU	SU	SU	SU	RSU	SU
Pick	466224	Caution	0%			AB	AB	AB	AB	AB	AB	AB	AB	AB	AB	AB	ABT	AB	AB	AB	AB	AB
Pick Crypton	466235	Caution	0%			AB	AB	AB	AB	AB	AB	AB	AB	AB	AB	AB	ABT	AB	AB	AB	AB	AB
Pinnacle	466503	Unsuitable	+25%			HZ	HZ	HZ	HZ	HZ	HZ	HZ	HZ	HZ	HZ	HZ	HZ	HZ	HZ	HZ	HZ	HZ
Pitch	466186	Approved	+0%			Y	Y	Y	Y	Y	Y	Y	Y	Y	Y	Y	Y	Y	Y	Y	Y	Y
Plait	466052	Caution	+25%			B	B	B	B	B	B	B	B	B	B	B	BT	B	B	B	B	B
Plume	466382	Caution	+0%			AS	AS	AS	A	ARSU	ASU	ASU	A	ARSU	ARSU	ASU	ASTU	ASU	ASU	ASU	ARSU	ASU
Pocket	466243	Unsuitable	+15%			AZ	AZ	AZ	AZ	AZ	AZ	AZ	AZ	AZ	AZ	AZ	AZ	AZ	AZ	AZ	AZ	AZ
Point	466090	Caution	+20%			KS	KS	KS	K	KRSU	KSU	KSU	K	KRSU	KRSU	KSU	KSTU	KSU	KSU	KSU	KRSU	KSU
Press	700016	Caution	+0%			Y	Y	Y	Y	Y	Y	Y	Y	Y	Y	Y	Y	Y	Y	Y	Y	Y
Pressed Plaid	466181	Unsuitable	+10%			BZ	BZ	BZ	BZ	BZ	BZ	BZ	BZ	BZ	BZ	BZ	BZ	BZ	BZ	BZ	BZ	BZ
Prime	466436	Unsuitable	+0%			AZ	AZ	AZ	AZ	AZ	AZ	AZ	AZ	AZ	AZ	AZ	AZ	AZ	AZ	AZ	AZ	AZ
Prompt	466493	Approved	+0%			Y	Y	Y	Y	Y	Y	Y	Y	Y	Y	Y	Y	Y	Y	Y	Y	Y
Province	466549	Caution	+0%		•	BCS	BCS	BCS	BC	BCRSU	BCSU	BCSU	BC	BCRSU	BCRSU	BCSU	BCSTU	BCSU	BCSU	BCSU	BCRSU	BCSU
Quatrefoil	459340	Caution	+20%			AS	AS	AS	A	ARSU	ASU	ASU	A	ARSU	ARSU	ASU	ASTU	ASU	ASU	ASU	ARSU	ASU
Quay	466390	Caution	+0%			Y	Y	Y	Y	Y	Y	Y	Y	Y	Y	Y	Y	Y	Y	Y	Y	Y



### Grade

Price grades correlate to those listed in the List Price Schedule for products with upholstery materials.

Please contact Customer Service for patterns graded as **Quote**.

### Extra Material Required

Yardage adjustments are required for those patterns less than 54 inches wide and/or having more than a nominal vertical repeat. This percentage amount must be added to the yardage requirement shown in the TUOHY List Prices and Specification Guide. Price grades shown here have already been adjusted as needed.

### Evaluation Codes

- A Seam, needle, top issues
- B Frays, unravels
- C Knit backing required
- D Acrylic backing required
- E Stretchy, wrinkles, puddles
- F Surface, pattern distorts
- G Creases, abrades, durability
- H Humidity
- I No tufting - nap, pattern
- J Glues poorly
- K Very thick
- L Thin, porous
- M Steams poorly
- N Memory weak
- O Color striates
- P No center seam

- R OK Loose seat or back
- S OK Tight seat or back
- T OK Lumbar
- U OK Arm & body
- V OK Center seam
- W OK Tufting
- X OK Gluing
- Y Approved
- Z Unsuitable

### Tuohy Furniture Corporation

42 Saint Albans Place  
Chatfield, Minnesota 55923  
e: info@tuohyfurniture.com  
t: 507.867.4280  
www.tuohyfurniture.com

**\*\*Grading Note:** Due to the current volatility of fabric pricing, we will no longer be listing grades on our website. Please see your customer service representative for current graded price.



When backing is required, the surcharge will be \$341 List for 5 – 22 yds; over 22 yds is \$15.50 List per yd. Add 1 week to lead time.

**Evaluation Codes by Product**

February 1, 2020

Pattern Name	Pattern Number	Evaluation	Grade**	Material Req'd	Backing Req'd	902	Aim	Arcelle	Bau	Bryant Park	Domino	Edo	Fabric Panels	Genevieve	International	International II	Kaesi	Leit	Moderna	Rien	Selone	Vita	
Quell	466366	Unsuitable		+25%		AMZ	AMZ	AMZ	AMZ	AMZ	AMZ	AMZ	AMZ	AMZ	AMZ	AMZ	AMZ	AMZ	AMZ	AMZ	AMZ	AMZ	AMZ
Queue	466443	Caution		+20%		JS	JS	JS	J	JRSU	JSU	JSU	J	JRSU	JRSU	JSU	JSTU	JSU	JSU	JSU	JRSU	JSU	JRSU
Rail	466535	Unsuitable		0		ABHZ	ABHZ	ABHZ	ABHZ	ABHZ	ABHZ	ABHZ	ABHZ	ABHZ	ABHZ	ABHZ	ABHZ	ABHZ	ABHZ	ABHZ	ABHZ	ABHZ	ABHZ
Reef	466332	Caution		+25%		AS	AS	AS	A	ARSU	ASU	ASU	A	ARSU	ARSU	ASU	ASTU	ASU	ASU	ASU	ARSU	ASU	ARSU
Regatta	466189	Caution		0%		S	S	S	X	RS	S	S	X	RS	RS	S	ST	S	S	S	S	RS	S
Relay	466453	Approved		+0%		Y	Y	Y	Y	Y	Y	Y	Y	Y	Y	Y	Y	Y	Y	Y	Y	Y	Y
Repeat Classic	462100	Caution		Quote													T						
Repeat Classic Print	462160	Caution		Quote													T						
Repeat Classic Stripe	462170	Caution		+15%		A	A	A	A	A	A	A	A	A	A	A	AT	A	A	A	A	A	A
Repeat Dot	462110	Caution		Quote		A	A	A	A	A	A	A	A	A	A	A	AT	A	A	A	A	A	A
Repeat Dot Print	462130	Caution		Quote		A	A	A	A	A	A	A	A	A	A	A	AT	A	A	A	A	A	A
Repeat Dot Ring	462150	Caution		+0%		A	A	A	A	A	A	A	A	A	A	A	AT	A	A	A	A	A	A
Rill	466370	Caution		0%		S	S	S		RSU	SU	SU		RSU	RSU	SU	STU	SU	SU	SU	RSU	SU	SU
Roman	466565	Caution		+0%		S	S	S	X	RSU	SU	SU	X	RSU	RSU	SU	STU	SU	SU	SU	RSU	SU	SU
Roster	466445	Caution		+15%		AB	AB	AB	AB	AB	AB	AB	AB	AB	AB	AB	ABT	AB	AB	AB	AB	AB	AB
Route	466544	Caution		+0%		S	S	S		RSU	SU	SU		RSU	RSU	SU	STU	SU	SU	SU	RSU	SU	SU
Rule	466190	Caution		+10%		A	A	A	A	A	A	A	A	A	A	A	AT	A	A	A	A	A	A
Runner	466108	Caution		0%		S	S	S		RSU	SU	SU		RSU	RSU	SU	STU	SU	SU	SU	RSU	SU	SU
Runner Standard	466167	Caution		0%		S	S	S		RSU	SU	SU		RSU	RSU	SU	STU	SU	SU	SU	RSU	SU	SU
Scope	466357	Unsuitable		Quote		HZ	HZ	HZ	HZ	HZ	HZ	HZ	HZ	HZ	HZ	HZ	HZ	HZ	HZ	HZ	HZ	HZ	HZ
Scuba	464930	Caution		+0%		EJNS	EJNS	EJNS	EJN	EJNRSU	EJNSU	EJNSU	EJN	EJNRSU	EJNRSU	EJNSU	EJNSTU	EJNSU	EJNSU	EJNSU	EJNRSU	EJNSU	EJNSU
Scute	466396	Caution		0%		S	S	S		RSU	SU	SU		RSU	RSU	SU	STU	SU	SU	SU	RSU	SU	SU
Scuttle	466429	Caution		0%		S	S	S	X	RSU	SU	SU	X	RSU	RSU	SU	STU	SU	SU	SU	RSU	SU	SU
Seal	700013	Approved		+10%		Y	Y	Y	Y	Y	Y	Y	Y	Y	Y	Y	Y	Y	Y	Y	Y	Y	Y
Sandal	466550	Unsuitable		+0%		ALZ	ALZ	ALZ	ALZ	ALZ	ALZ	ALZ	ALZ	ALZ	ALZ	ALZ	ALZ	ALZ	ALZ	ALZ	ALZ	ALZ	ALZ
Sequence	466179	Caution		+0%		A	A	A	AX	A	A	A	AX	A	A	A	AT	A	A	A	A	A	A
Sequential Stripe	466377	Caution		10%													T						
Serried	466408	Caution		0%		EFNS	EFNS	EFNS	EFN	EFNRSU	EFNSU	EFNSU	EFN	EFNRSU	EFNRSU	EFNSU	EFNSTU	EFNSU	EFNSU	EFNSU	EFNRSU	EFNSU	EFNSU
Shadow	466521	Caution		0%		S	S	S		RSU	SU	SU		RSU	RSU	SU	STU	SU	SU	SU	RSU	SU	SU
Sheen	466246	Caution		+0%		S	S	S		RSU	SU	SU		RSU	RSU	SU	STU	SU	SU	SU	RSU	SU	SU
Shift	466527	Caution		+15%		S	S	S	X	RSU	SU	SU	X	RSU	RSU	SU	STU	SU	SU	SU	RSU	SU	SU
Sift	466479	Unsuitable		+0%		ABZ	ABZ	ABZ	ABZ	ABZ	ABZ	ABZ	ABZ	ABZ	ABZ	ABZ	ABZ	ABZ	ABZ	ABZ	ABZ	ABZ	ABZ
Silk Canvas	465985	Unsuitable		+0%		GLMZ	GLMZ	GLMZ	GLMZ	GLMZ	GLMZ	GLMZ	GLMZ	GLMZ	GLMZ	GLMZ	GLMZ	GLMZ	GLMZ	GLMZ	GLMZ	GLMZ	GLMZ
Slumber	466365	Unsuitable		+0%		GMZ	GMZ	GMZ	GMZ	GMZ	GMZ	GMZ	GMZ	GMZ	GMZ	GMZ	GMZ	GMZ	GMZ	GMZ	GMZ	GMZ	GMZ
Small Dot Pattern	458320	Caution		+20%		A	A	A	A	A	A	A	A	A	A	A	AT	A	A	A	A	A	A
Soft Tweed	466197	Caution		+0%		S	S	S	X	RSU	SU	SU	X	RSU	RSU	SU	STU	SU	SU	SU	RSU	SU	SU
Songbird	466523	Unsuitable		+25%		AZ	AZ	AZ	AZ	AZ	AZ	AZ	AZ	AZ	AZ	AZ	AZ	AZ	AZ	AZ	AZ	AZ	AZ
Sort	466273	Caution		0%		EFNS	EFNS	EFNS	EFNX	EFNRSU	EFNSU	EFNSU	EFNX	EFNRSU	EFNRSU	EFNSU	EFNSTU	EFNSU	EFNSU	EFNSU	EFNRSU	EFNSU	EFNSU
Span	466395	Caution		0		AS	AS	AS	AX	ARSU	ASU	ASU	AX	ARSU	ARSU	ASU	ASTU	ASU	ASU	ASU	ARSU	ASU	ARSU
Spare	466465	Unsuitable		+10%		AMZ	AMZ	AMZ	AMZ	AMZ	AMZ	AMZ	AMZ	AMZ	AMZ	AMZ	AMZ	AMZ	AMZ	AMZ	AMZ	AMZ	AMZ
Splay	466448	Approved		+20%		Y	Y	Y	Y	Y	Y	Y	Y	Y	Y	Y	Y	Y	Y	Y	Y	Y	Y
Spry	466414	Unsuitable		+10%		AZ	AZ	AZ	AZ	AZ	AZ	AZ	AZ	AZ	AZ	AZ	AZ	AZ	AZ	AZ	AZ	AZ	AZ
Stark	700005	Approved		+0%		Y	Y	Y	Y	Y	Y	Y	Y	Y	Y	Y	Y	Y	Y	Y	Y	Y	Y
Stature	466180	Caution		0%		EJNS	EJNS	EJNS	EJN	EJNRSU	EJNSU	EJNSU	EJN	EJNRSU	EJNRSU	EJNSU	EJNSTU	EJNSU	EJNSU	EJNSU	EJNRSU	EJNSU	EJNSU
Steady	465947	Caution		+0%		ACS	ACS	ACS	AC	ACRSU	ACSU	ACSU	AC	ACRSU	ACRSU	ACSU	ACSTU	ACSU	ACSU	ACSU	ACRSU	ACSU	ACSU
Steady Crypton	465946	Caution		+0%		CS	CS	CS	CX	CRSU	CSU	CSU	CX	CRSU	CRSU	CSU	CSTU	CSU	CSU	CSU	CRSU	CSU	CSU



**Grade**

Price grades correlate to those listed in the List Price Schedule for products with upholstery materials.

Please contact Customer Service for patterns graded as **Quote**.

**Extra Material Required**

Yardage adjustments are required for those patterns less than 54 inches wide and/or having more than a nominal vertical repeat. This percentage amount must be added to the yardage requirement shown in the TUOHY List Prices and Specification Guide. Price grades shown here have already been adjusted as needed.

**Evaluation Codes**

- A Seam, needle, top issues
- B Frays, unravels
- C Knit backing required
- D Acrylic backing required
- E Stretchy, wrinkles, puddles
- F Surface, pattern distorts
- G Creases, abrades, durability
- H Humidity
- I No tufting - nap, pattern
- J Glues poorly
- K Very thick
- L Thin, porous
- M Steams poorly
- N Memory weak
- O Color striates
- P No center seam

- R OK Loose seat or back
- S OK Tight seat or back
- T OK Lumbar
- U OK Arm & body
- V OK Center seam
- W OK Tufting
- X OK Gluing
- Y Approved
- Z Unsuitable

**Tuohy Furniture Corporation**

42 Saint Albans Place  
 Chatfield, Minnesota 55923  
 e: info@tuohyfurniture.com  
 t: 507.867.4280  
 www.tuohyfurniture.com

### Evaluation Codes by Product

Pattern Name	Pattern Number	Evaluation	Grade**	Material Req'd	Backg Req'd	902	Aim	Arcelle	Bau	Bryant Park	Domino	Edo	Fabric Panels	Genevieve	International	International II	Kaesi	Leit	Moderna	Rien	Selone	Vita	
Steep	700007	Approved	+0%			Y	Y	Y	Y	Y	Y	Y	Y	Y	Y	Y	Y	Y	Y	Y	Y	Y	Y
Stow	700014	Approved	+0%			Y	Y	Y	Y	Y	Y	Y	Y	Y	Y	Y	Y	Y	Y	Y	Y	Y	Y
Stripes	463980	Caution	10%			AB	AB	AB	AB	AB	AB	AB	AB	AB	AB	AB	ABT	AB	AB	AB	AB	AB	AB
Strum	466122	Approved	+0%			Y	Y	Y	Y	Y	Y	Y	Y	Y	Y	Y	Y	Y	Y	Y	Y	Y	Y
Study	466269	Unsuitable	Quote			ABZ	ABZ	ABZ	ABZ	ABZ	ABZ	ABZ	ABZ	ABZ	ABZ	ABZ	ABZ	ABZ	ABZ	ABZ	ABZ	ABZ	ABZ
Sudden	463000	Approved	+0%			Y	Y	Y	Y	Y	Y	Y	Y	Y	Y	Y	Y	Y	Y	Y	Y	Y	Y
Sundry	466441	Unsuitable	+0%			HZ	HZ	HZ	HZ	HZ	HZ	HZ	HZ	HZ	HZ	HZ	HZ	HZ	HZ	HZ	HZ	HZ	HZ
Superweave	466241	Unsuitable	+0%			ABLZ	ABLZ	ABLZ	ABLZ	ABLZ	ABLZ	ABLZ	ABLZ	ABLZ	ABLZ	ABLZ	ABLZ	ABLZ	ABLZ	ABLZ	ABLZ	ABLZ	ABLZ
Swathe	466416	Unsuitable	+0%			GMZ	GMZ	GMZ	GMZ	GMZ	GMZ	GMZ	GMZ	GMZ	GMZ	GMZ	GMZ	GMZ	GMZ	GMZ	GMZ	GMZ	GMZ
Switch	466515	Caution	+0%			BS	BS	BS	B	BRSU	BSU	BSU	B	BRSU	BSU	BSU	BSTU	BSU	BSU	BSU	BRSU	BSU	BSU
Swivel	466374	Caution	+20%			S	S	S		RSU	SU	SU		RSU	RSU	SU	STU	SU	SU	SU	RSU	SU	SU
Tangram	466084	Caution	Quote			JS	JS	JS	J	JRSU	JSU	JSU	J	JRSU	JRSU	JSU	JSTU	JSU	JSU	JSU	JRSU	JSU	JSU
Taper	466413	Unsuitable	+0%			AZ	AZ	AZ	AZ	AZ	AZ	AZ	AZ	AZ	AZ	AZ	AZ	AZ	AZ	AZ	AZ	AZ	AZ
Teatro	466309	Caution	+0%			AS	AS	AS	AX	ARSU	ASU	ASU	AX	ARSU	ARSU	ASU	ASTU	ASU	ASU	ASU	ASU	ARSU	ASU
Tek-Wall Steward	399547	Unsuitable	+0%			Z	Z	Z	Z	Z	Z	Z	Z	Z	Z	Z	Z	Z	Z	Z	Z	Z	Z
Tempera	466426	Unsuitable	+0%			AZ	AZ	AZ	AZ	AZ	AZ	AZ	AZ	AZ	AZ	AZ	AZ	AZ	AZ	AZ	AZ	AZ	AZ
Tend	466352	Unsuitable	+25%			AZ	AZ	AZ	AZ	AZ	AZ	AZ	AZ	AZ	AZ	AZ	AZ	AZ	AZ	AZ	AZ	AZ	AZ
Terra	466572	Caution	+0%			S	S	S		RSU	SU	SU		RSU	RSU	SU	STU	SU	SU	SU	RSU	SU	SU
The Firm	465999	Caution	+25%			AJ	AJ	AJ	AJ	AJ	AJ	AJ	AJ	AJ	AJ	AJ	AJT	AJ	AJ	AJ	AJ	AJ	AJ
The Story of My Life	464670	Unsuitable	+25%			ABZ	ABZ	ABZ	ABZ	ABZ	ABZ	ABZ	ABZ	ABZ	ABZ	ABZ	ABZ	ABZ	ABZ	ABZ	ABZ	ABZ	ABZ
Tinge	700010	Approved	+50%			Y	Y	Y	Y	Y	Y	Y	Y	Y	Y	Y	Y	Y	Y	Y	Y	Y	Y
Toostripe	462260	Unsuitable	+0%			ABZ	ABZ	ABZ	ABZ	ABZ	ABZ	ABZ	ABZ	ABZ	ABZ	ABZ	ABZ	ABZ	ABZ	ABZ	ABZ	ABZ	ABZ
Tracery	466372	Unsuitable	+0%			HZ	HZ	HZ	HZ	HZ	HZ	HZ	HZ	HZ	HZ	HZ	HZ	HZ	HZ	HZ	HZ	HZ	HZ
Trait	464830	Caution	+0%			S	S	S		RSU	SU	SU		RSU	RSU	SU	STU	SU	SU	SU	RSU	SU	SU
Transmit	901895	Unsuitable	+0%			AJLZ	AJLZ	AJLZ	AJLZ	AJLZ	AJLZ	AJLZ	AJLZ	AJLZ	AJLZ	AJLZ	AJLZ	AJLZ	AJLZ	AJLZ	AJLZ	AJLZ	AJLZ
Trellis	466244	Caution	Quote			AS	AS	AS	A	ARSU	ASU	ASU	A	ARSU	ARSU	ASU	ASTU	ASU	ASU	ASU	ARSU	ASU	ASU
Tress	466529	Unsuitable	+0%			MZ	MZ	MZ	MZ	MZ	MZ	MZ	MZ	MZ	MZ	MZ	MZ	MZ	MZ	MZ	MZ	MZ	MZ
Trio	466088	Caution	+25%			ABJ	ABJ	ABJ	ABJ	ABJ	ABJ	ABJ	ABJ	ABJ	ABJ	ABJ	ABJT	ABJ	ABJ	ABJ	ABJ	ABJ	ABJ
Trundle	466434	Caution	0%			S	S	S		RSU	SU	SU		RSU	RSU	SU	STU	SU	SU	SU	RSU	SU	SU
Tuft	700004	Approved	+50%			Y	Y	Y	Y	Y	Y	Y	Y	Y	Y	Y	Y	Y	Y	Y	Y	Y	Y
Turret	466586	Caution	+0%			S	S	S		RSU	SU	SU		RSU	RSU	SU	STU	SU	SU	SU	RSU	SU	SU
Unisol	461160	Unsuitable	+10%			BZ	BZ	BZ	BZ	BZ	BZ	BZ	BZ	BZ	BZ	BZ	BZ	BZ	BZ	BZ	BZ	BZ	BZ
Vases	466164	Caution	+25%			AJ	AJ	AJ	AJ	AJ	AJ	AJ	AJ	AJ	AJ	AJ	AJT	AJ	AJ	AJ	AJ	AJ	AJ
Veer	466497	Caution	+0%			Y	Y	Y	Y	Y	Y	Y	Y	Y	Y	Y	Y	Y	Y	Y	Y	Y	Y
Velvet Stripe	466279	Caution	+10%			JS	JS	JS	J	JRSU	JSU	JSU	J	JRSU	JRSU	JSU	JSTU	JSU	JSU	JSU	JRSU	JSU	JSU
Vineyard	466133	Unsuitable	+25%			HZ	HZ	HZ	HZ	HZ	HZ	HZ	HZ	HZ	HZ	HZ	HZ	HZ	HZ	HZ	HZ	HZ	HZ
Voyage	456801	Caution	+0%			S	S	S		RSU	SU	SU		RSU	RSU	SU	STU	SU	SU	SU	RSU	SU	SU
Waver	466459	Unsuitable	+0%			HZ	HZ	HZ	HZ	HZ	HZ	HZ	HZ	HZ	HZ	HZ	HZ	HZ	HZ	HZ	HZ	HZ	HZ
Wend	466381	Caution	+0%			S	S	S		RSU	SU	SU		RSU	RSU	SU	STU	SU	SU	SU	RSU	SU	SU
Willow	466542	Caution	0%			S	S	S		RSU	SU	SU		RSU	RSU	SU	STU	SU	SU	SU	RSU	SU	SU
Wool Check	466501	Unsuitable	+25%			AZ	AZ	AZ	AZ	AZ	AZ	AZ	AZ	AZ	AZ	AZ	AZ	AZ	AZ	AZ	AZ	AZ	AZ
Wool Rib	466198	Unsuitable	+0%			BZ	BZ	BZ	BZ	BZ	BZ	BZ	BZ	BZ	BZ	BZ	BZ	BZ	BZ	BZ	BZ	BZ	BZ
Wool Striae	466184	Caution	+10%			S	S	S	X	RSU	SU	SU	X	RSU	RSU	SU	STU	SU	SU	SU	RSU	SU	SU
Wool Velvet	466120	Caution	+0%			S	S	S		RSU	SU	SU		RSU	RSU	SU	STU	SU	SU	SU	RSU	SU	SU



### Grade

Price grades correlate to those listed in the List Price Schedule for products with upholstery materials.

Please contact Customer Service for patterns graded as **Quote**.

### Extra Material Required

Yardage adjustments are required for those patterns less than 54 inches wide and/or having more than a nominal vertical repeat. This percentage amount must be added to the yardage requirement shown in the TUOHY List Prices and Specification Guide. Price grades shown here have already been adjusted as needed.

### Evaluation Codes

- A Seam, needle, top issues
- B Frays, unravels
- C Knit backing required
- D Acrylic backing required
- E Stretchy, wrinkles, puddles
- F Surface, pattern distorts
- G Creases, abrades, durability
- H Humidity
- I No tufting - nap, pattern
- J Glues poorly
- K Very thick
- L Thin, porous
- M Steams poorly
- N Memory weak
- O Color striates
- P No center seam

- R OK Loose seat or back
- S OK Tight seat or back
- T OK Lumbar
- U OK Arm & body
- V OK Center seam
- W OK Tufting
- X OK Gluing
- Y Approved
- Z Unsuitable

### Tuohy Furniture Corporation

42 Saint Albans Place  
Chatfield, Minnesota 55923  
e: info@tuohyfurniture.com  
t: 507.867.4280  
www.tuohyfurniture.com



TUOHY UPHOLSTERY PARTNERSHIPS

Designtex  
KnollTextiles  
**Maharam**

**Tuohy Furniture Corporation**  
42 Saint Albans Place, Chatfield, MN 55923  
t 507.867.4280  
info@tuohyfurniture.com  
[www.tuohyfurniture.com](http://www.tuohyfurniture.com)

TUOHY



TUOHY UPHOLSTERY PARTNERSHIPS

**Designtex**  
**KnollTextiles**  
**Maharam**

See Listings

TUOHY LEATHERS & FAUX-LEATHER

LEATHERS	GRADE
<b>Lena</b>	<b>L1</b>
FAUX-LEATHER	GRADE
<b>Silex</b>	<b>F3</b>

**Tuohy Furniture Corporation**  
42 Saint Albans Place, Chatfield, MN 55923  
t 507.867.4280  
info@tuohyfurniture.com

[www.tuohyfurniture.com](http://www.tuohyfurniture.com)