

TUOHY

Uku Cantilevered Desk – Wire Trough

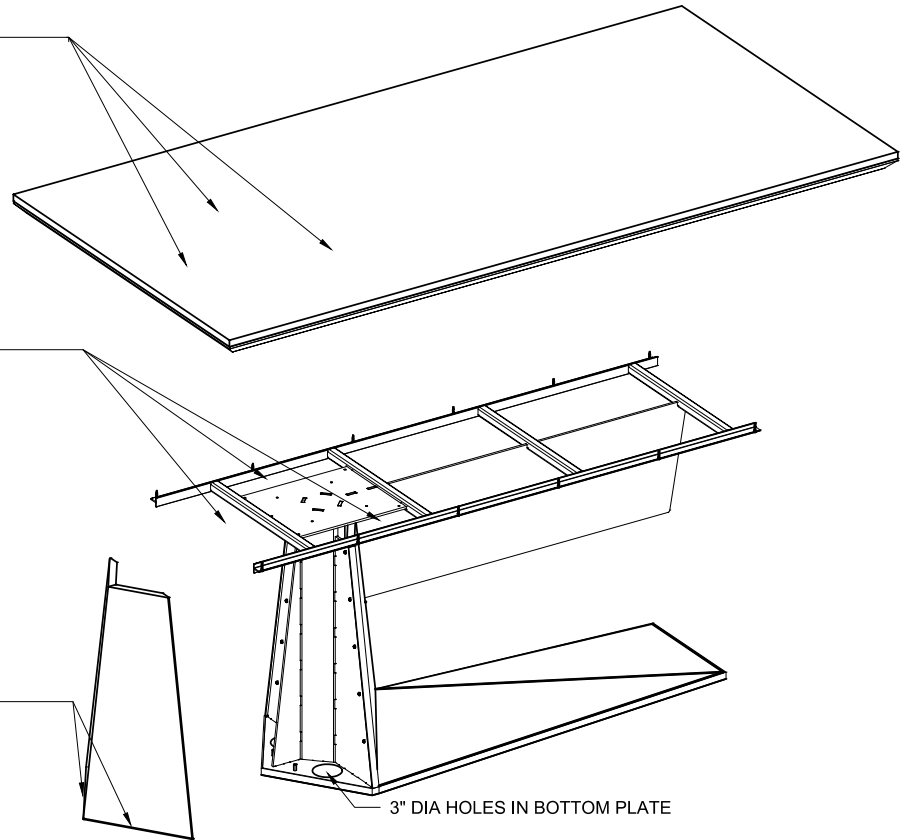


UKU CANTILEVER WIRE MANAGEMENT

GROMMETS/POWER UNITS CAN BE LOCATED IN THE TOP OVER OPENINGS IN THE FRAME (LIMITED IN HEIGHT ON THE TWO INTERIOR 13"W AREAS ON EITHER SIDE OF PLATE)

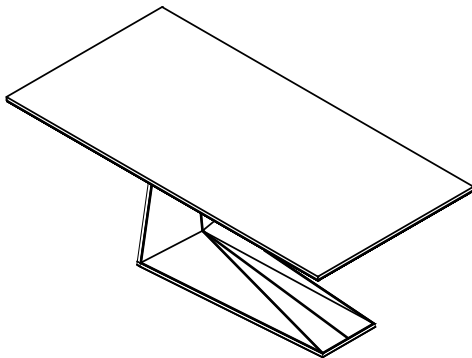
OPENINGS IN FRAME- CORDS CAN RUN DOWN INTO OPENINGS BEHIND REMOVABLE COVER PANEL

MOUSEHOLE(S) IN BOTTOM OF REMOVABLE COVER PANEL



NOTES:

- * THERE WILL BE 3"DIA OPENINGS IN THE BOTTOM OF THE BASE PLATE ON EITHER SIDE (AT THE BACK END OF THE BASE). THE FLOOR CORE WOULD NEED TO FIT UP INTO THE CUTOUT. RUN WIRES STRAIGHT UP. MAY BE DIFFICULT TO PLUG IN - THE DESK WOULD NEED TO BE TIPPED, THEN RUN THE WIRES THRU THE HOLE AND UP AND CORDS WILL NOT FIT UNDERNEATH THE FRAME TO GET OUTSIDE OF THE BASE AS THE LEVELERS ARE INSET AND THE GAP IS SMALL.
- * CAN ADD OPTIONAL MOUSEHOLE CUTOUT(S) IN THE REMOVABLE COVER PANEL ON EITHER SIDE TO RUN CORDS STRAIGHT OUT THE BACKSIDE OF THE BASE ABOVE THE METAL FRAME.



FRAME OPENING DIMENSIONS
(SAME FOR ALL TABLE SIZES)

